



landscapeforms

Rama



Minimalist Design, International Aesthetic

A favorite of lighting designers and landscape architects around the world, Rama celebrates its 20 years with a redesign that incorporates new technologies and materials. What hasn't changed is Rama's distinctive linear character and timeless form.



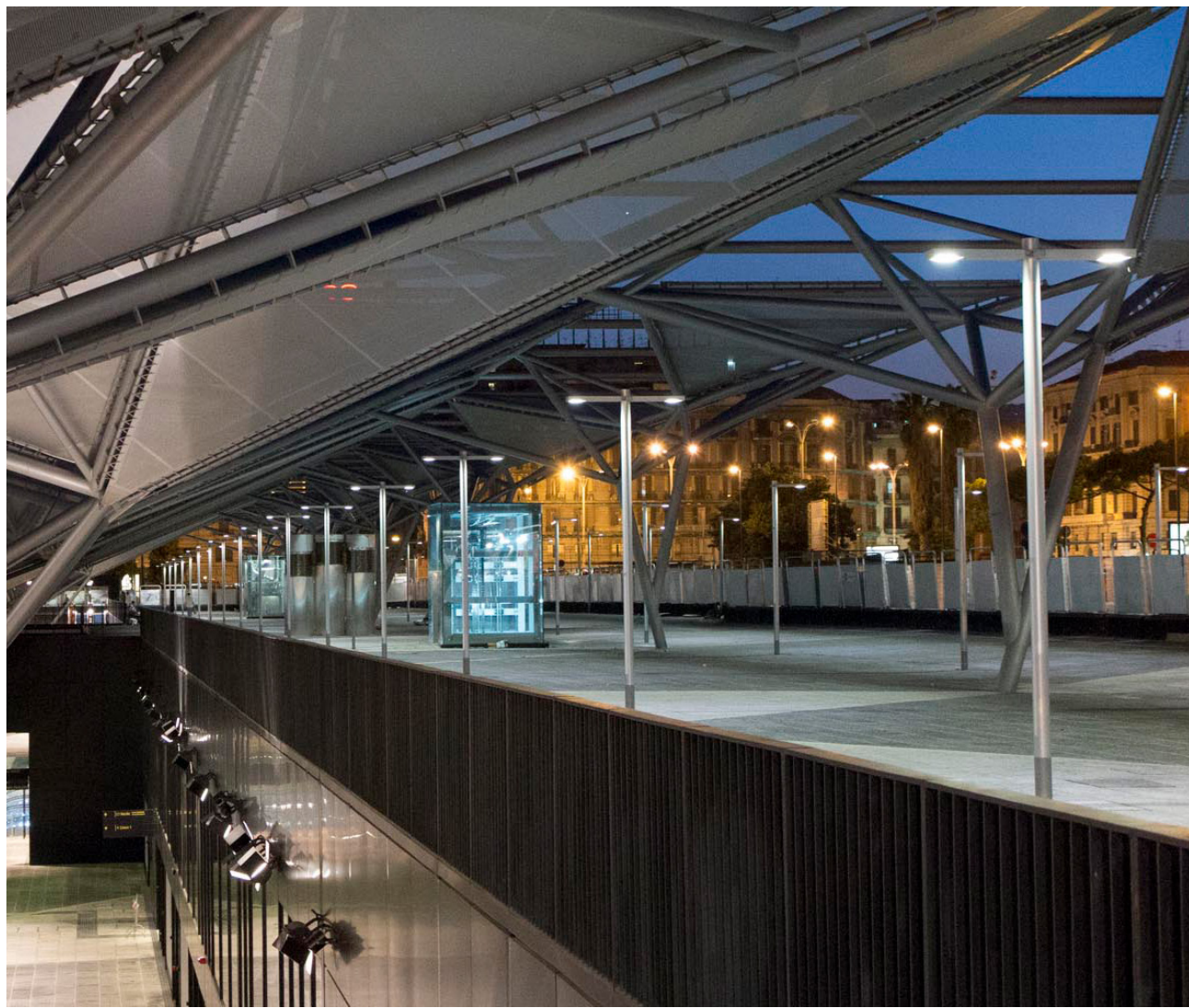






Improved Performance

While Rama's beautifully slender fixture remains, its interior has been reengineered to improve performance and simplify installation and maintenance. An easily accessed interior compartment houses electronics and reserves space for the addition of sensors and control systems.





Broad Application

Single, double, and multiple luminaires can be mounted in different positions on 4.5m-, 6m-, and 8m-high poles. The fixture's redesigned bracket system adapts to any mount or surface and includes an adjustable tenon for retrofitting poles.

Four asymmetric distributions, a redesigned LED array with four outputs, and color temperatures from 2,700K to 4,000K give lighting designers and landscape architects tools to create a broad range of pedestrian and streetscape applications. Rama lights have a powdercoated aluminum silver or dusk finish and are UL listed, International Dark Sky approved, and meet ROHS guidelines.















Materials

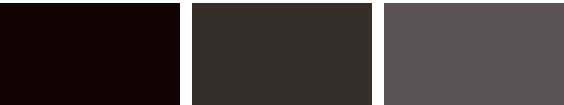
Luminaire & Mounting Brackets



Aluminum Silver

Dusk

Powdercoated Metal (Gloss; Poles Only)

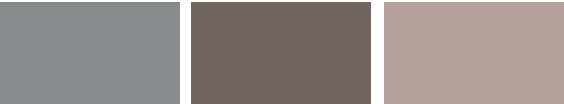


Black

Stormcloud

Dusk

Powdercoated Metal (Metallic; Poles Only)

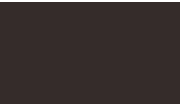


Silver

Titanium

Mercury

Designer Palette Architectural Series (Low Sheen; Poles Only)



Matte Black



landscapeforms

Rama
Revised May 29, 2025