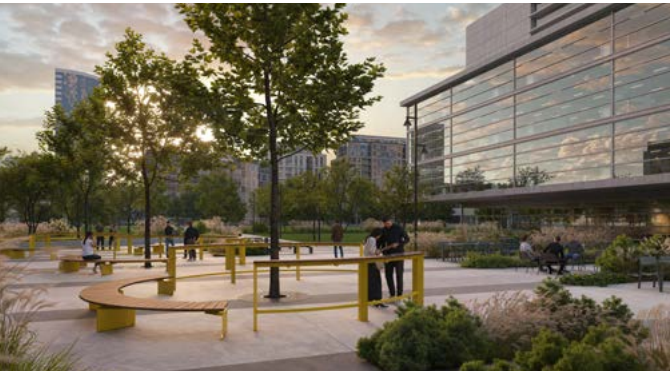


# Link Rail

landscapeforms

## Sustainability Data Sheet



Sustainability is the foundation of Landscape Forms’ commitment to enhance the experience of outdoor space. Across our portfolio, we prioritize responsible design, materials, manufacturing practices and partnerships that honor the environments we help shape—today and for the future. Each solution reflects our ongoing efforts to reduce environmental impact and advance sustainable landscape design through thoughtful decisions across the entire lifecycle.

### Link Rail is manufactured using the following materials:

Material	Parts	Recyclable
Steel	Rail Supports	100%
Wood	Rail Tops	100%

### Finishes

All metal is finished with Pangard II® polyester powdercoat, a lead-free and hazardous air pollutants (HAPS)-free finish that does not generate hazardous waste and contains less than 1% VOCs. Once cured, trace VOCs are fully inert, ensuring the finish does not release airborne contaminants.

Landscape Forms wood furniture for outdoor use is manufactured from wood species that weather naturally in outdoor settings to beautiful pewter gray. We do not apply paints or finishes to these products and do not recommend the use of finishes which would require ongoing maintenance programs as the wood weathers.

Packaging Materials	Parts	Recyclable
Biodegradable Plastic	Product Bagged to Protect Finish	100%
Recycled Skid		100%
Cardboard with 35% Recycled Content		100%

To find local recyclers visit: for aluminum: [www.recyclealuminum.org](http://www.recyclealuminum.org); for steel: [www.recycle-steel.org](http://www.recycle-steel.org); for cardboard: [www.fibrebox.org](http://www.fibrebox.org).

# Link Rail

landscapeforms

## Sustainability Data Sheet

Recycled Content		
Style	Post Consumer	Pre Consumer
Inline Leaning Rail, Straight	47.0%	25.0%
Inline Leaning Rail, Straight, Backstop	48.0%	26.0%
Inline Leaning Rail, 45 Deg, Right End Miter	47.0%	25.0%
Inline Leaning Rail, 45deg, Right End Miter, Inside Backstop	48.0%	26.0%
Inline Leaning Rail, 45deg, Right End Miter, Outside Backstop	48.0%	26.0%
Inline Leaning Rail, 45deg, Left End Miter	47.0%	25.0%
Inline Leaning Rail, 45 Deg, Left End Miter, Inside Backstop	48.0%	26.0%
Inline Leaning Rail, 45deg, Left End Miter, Outside Backstop	48.0%	26.0%
Inline Bar Rail, Straight	40.0%	22.0%
Inline Bar Rail, Straight, Backstop	42.0%	22.0%
Inline Bar Rail, 45deg, Right End Miter	41.0%	22.0%
Inline Bar Rail, 45 Deg, Right End Miter, Inside Backstop	42.0%	23.0%
Inline Bar Rail, 45deg, Right End Miter, Outside Backstop	42.0%	23.0%
Inline Bar Rail, 45deg, Left End Miter	41.0%	22.0%
Inline Bar Rail, 45deg, Left End Miter, Inside Backstop	42.0%	23.0%
Inline Bar Rail, 45deg, Left End Miter, Outside Backstop	42.0%	23.0%
Piano Key Leaning Rail, Straight	48.0%	26.0%
Piano Key Leaning Rail, Straight, Backstop	49.0%	26.0%
Piano Key Leaning Rail, 96in Radius	47.0%	26.0%
Piano Key Leaning Rail, 96in Radius, Inside Backstop	48.0%	26.0%
Piano Key Leaning Rail, 96in Radius, Outside Backstop	48.0%	26.0%

# Link Rail

landscapeforms

## Sustainability Data Sheet

Recycled Content		
Style	Post Consumer	Pre Consumer
Piano Key Leaning Rail, 140in Radius	47.0%	26.0%
Piano Key Leaning Rail, 140in Radius, Inside Backstop	48.0%	26.0%
Piano Key Leaning Rail, 140in Radius, Outside Backstop	48.0%	26.0%
Piano Key Bar Rail, Straight	42.0%	23.0%
Piano Key Bar Rail, Straight, Backstop	43.0%	23.0%
Piano Key Bar Rail, 96in Radius	41.0%	22.0%
Piano Key Bar Rail, 96in Radius, Inside Backstop	42.0%	23.0%
Piano Key Bar Rail, 96in Radius, Outside Backstop	42.0%	23.0%
Piano Key Bar Rail, 140in Radius	41.0%	22.0%
Piano Key Bar Rail, 140in Radius, Inside Backstop	42.0%	23.0%
Piano Key Bar Rail, 140in Radius, Outside Backstop	43.0%	23.0%

## Care and Maintenance

Link Rail is designed and engineered to live a long, useful life in outdoor spaces without the use of chemical cleaners to maintain the finish. The durability, longevity and low maintenance of our products contribute to responsible stewardship of the earth's resources.

All metal is finished with Landscape Forms' proprietary Pangard II® polyester powdercoat, a hard yet flexible finish that resists rusting, chipping, peeling and fading and requires no cleaning solvents once installed. Clean surface as needed using a soft cloth or brush with a mild detergent. Avoid steam cleaning, abrasive cleansers, carbon steel brushes/wools and cleaners containing chlorine. Outdoor use will require periodic finish inspection and maintenance. Inspect periodically for scratches, nicks and gouges. Touch-up paint is included with every order and can be used to repair minor nicks and scratches.

Exterior woods require no maintenance. If desired, the surface may be scrubbed with warm soapy water and soft bristle brush. Pressure washing, steel wool/wire brushes are not recommended. Heavily ingrained stains may be sanded away with fine grade sandpaper worked in the direction of the grain. Sanded wood will weather to a gray patina.

Visit [landscapeforms.com](https://landscapeforms.com) for more information. Specifications are subject to change without notice. Landscape Forms supports the Landscape Architecture Foundation at the Second Century level.  
©2025 Landscape Forms, Inc. Printed in U.S.A. All Rights Reserved.

[landscapeforms.com](https://landscapeforms.com) | [specify@landscapeforms.com](mailto:specify@landscapeforms.com)