

Lakeside Bench

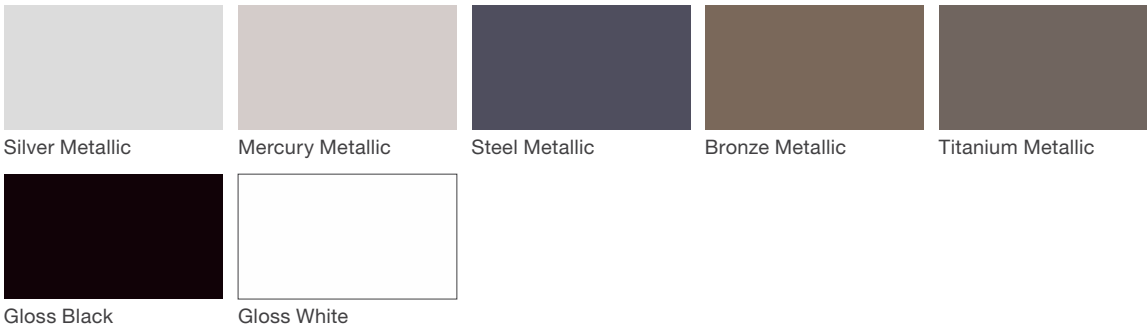
landscapeforms®

Material / Colors Sheet

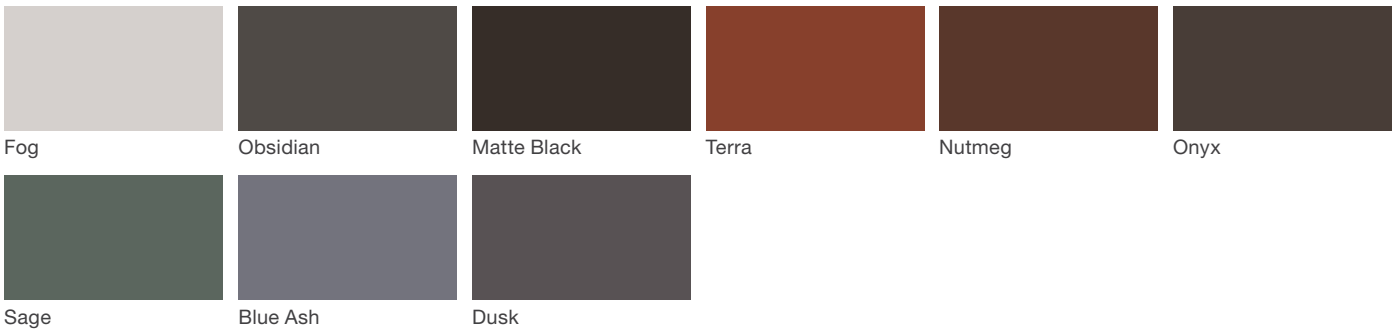
Vivid Series - Powdercoated Metal* (Fine Texture)



Neutral Series - Powdercoated Metal*



Architectural Series - Powdercoated Metal* (Fine Texture)

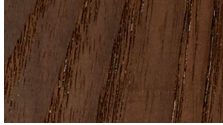


Lakeside Bench

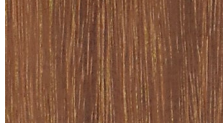
landscapeforms®

Material / Colors Sheet

Woodgrains (Exterior, No Finish)*



Domestically Sourced
Thermally Modified Ash

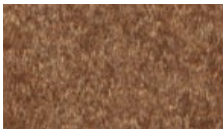


Ipe (P)



Jarrah (P)

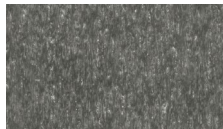
Polysite®



Bark



Black



Driftwood



White

Powdercoated Metal

Powdercoated Metal Pangard II® Polyester Powdercoat is a hard, yet flexible, finish that resists rusting, chipping, peeling and fading. In addition to colors shown, a wide selection of optional and custom colors may be specified for an upcharge.

* All colors and patterns shown are approximate and may vary from sample and final.

Woodgrains (Exterior, No Finish)

Exterior woods weather to a warm, pewter gray; no finish is applied so no maintenance is required. Available in Ipe, Jarrah, and Domestically Sourced Thermally Modified Ash (DSTMA); and if applicable, Redwood, Teak, or Alaskan Yellow Cedar. Pricing for standard woods and options varies. (P) = Premium Woods

* All colors and woodgrains shown are approximate and may vary

Polysite®

Polysite® Made of recycled 100% high-density polyethylene, polysite will not rot, splinter or crack and resists moisture, corrosive substances and insects.

* All colors and patterns shown are approximate and may vary from sample and final.

* All colors and woodgrains shown are approximate and may vary from sample and final.

Visit landscapeforms.com for more information. Specifications are subject to change without notice. Landscape Forms supports the Landscape Architecture Foundation at the Second Century level. ©2023 Landscape Forms, Inc.

landscapeforms.com | specify@landscapeforms.com