

# Harpo Lounge Chair



## Material / Colors Sheet

### Urbidermis Furniture - Powdercoated Metal (Low Sheen)\*



Urbidermis Aluminum



Urbidermis Dark Grey  
(LF Dusk)



Urbidermis Light Grey

### Vivid Series - Powdercoated Metal\* (Fine Texture)



Clay



Lemon



Mango



Loll Sunset Orange



Chili



Loll Apple Red



Loll Leaf Green



Moss

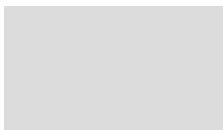


Forest

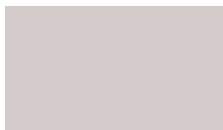


Loll Navy Blue

### Neutral Series - Powdercoated Metal\*



Silver Metallic



Mercury Metallic



Steel Metallic



Bronze Metallic



Titanium Metallic



Gloss Black



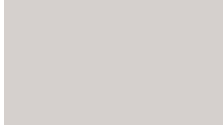
Gloss White

# Harpo Lounge Chair

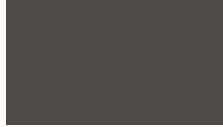
landscapeforms®

## Material / Colors Sheet

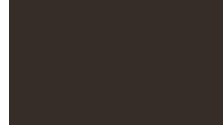
### Architectural Series - Powdercoated Metal\* (Fine Texture)



Fog



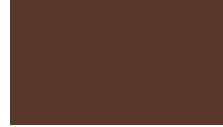
Obsidian



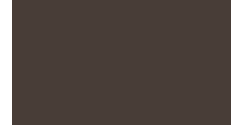
Matte Black



Terra



Nutmeg



Onyx



Sage

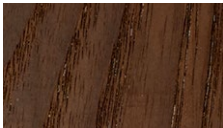


Blue Ash

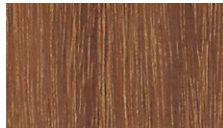


Dusk

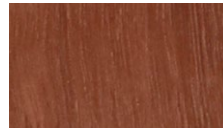
### Woodgrains (Exterior, No Finish)\*



Domestically Sourced  
Thermally Modified Ash



Ipe (P)



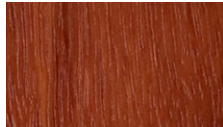
Jarrah (P)

Domestically Sourced Thermally Modified Ash is only available on the single chaise lounge.

### Woodgrains (Interior, LF-80 Finish)\*



Domestically Sourced  
Thermally Modified Ash



Jarrah (P)

Domestically Sourced Thermally Modified Ash is only available on the single chaise lounge.

# Harpo Lounge Chair

## Material / Colors Sheet

### Urbidermis Powdercoated Metal

Urbidermis products feature three exclusive powdercoat colors—Aluminum, Aluminum Silver, Black, Dark Grey, Dusk, and Light Grey—chosen to accentuate the modern, minimalist design language for which the firm is known. These exclusive colors utilize the same material composition and application process as Landscape Forms' Pangard II® Polyester Powdercoat, a hard, yet flexible finish that resists rusting, chipping, peeling and fading.

### Powdercoated Metal

Powdercoated Metal Pangard II® Polyester Powdercoat is a hard, yet flexible, finish that resists rusting, chipping, peeling and fading. In addition to colors shown, a wide selection of optional and custom colors may be specified for an upcharge.

\* All colors and patterns shown are approximate and may vary from sample and final.

### Woodgrains (Exterior, No Finish)

Exterior woods weather to a warm, pewter gray; no finish is applied so no maintenance is required. Available in Ipe, Jarrah, and Domestically Sourced Thermally Modified Ash (DSTMA); and if applicable, Redwood, Teak, or Alaskan Yellow Cedar. Pricing for standard woods and options varies. (P) = Premium Woods

\* All colors and woodgrains shown are approximate and may vary

### Woodgrains (Interior, LF-80 Finish)

Interior woods are finished with Landscape Forms' exclusive LF-80 wood finish, a clear, catalyzed acrylic lacquer. Available in Oak, Maple, Jarrah, and Domestically Sourced Thermally Modified Ash (DSTMA). Pricing for standard woods and options varies. (P) = Premium Woods

\* All colors and woodgrains shown are approximate and may vary

*Visit [landscapeforms.com](https://landscapeforms.com) for more information. Specifications are subject to change without notice. Landscape Forms supports the Landscape Architecture Foundation at the Second Century level.*  
©2023 Landscape Forms, Inc.

[landscapeforms.com](https://landscapeforms.com) | [specify@landscapeforms.com](mailto:specify@landscapeforms.com)