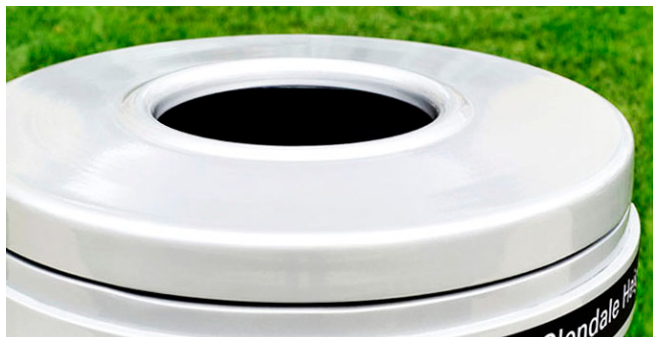


Chase Park Litter

landscapeforms

Product Data Sheet



Designed and built to meet the rigors of urban spaces, Chase Park litters provide exceptional durability with a highly refined aesthetic. Constructed of a cast aluminum body with a spun aluminum top, the litter features a hinged side panel door and options for signage in both top opening and side opening styles. Designed by Kipp Stewart.

Litter Receptacles

- Receptacle features a hinged side panel door for easy emptying.
- Constructed of cast aluminum sides and door, with spun aluminum top and polyethylene base.
- The standard black polyethylene base is prefilled with sand and then plugged. This allows the unit to be freestanding. There is also a slot in the base to allow for the unit to be surface-mounted.
- Door hinge and latch are aluminum.
- Top and side-opening receptacle can be freestanding or surface mounted.
- Logo band available with both top opening and side-opening styles.
- Sand pan optional with side opening unit.
- Capacity of the top-opening receptacle is 40 gallons, for side-opening, 36 gallons.
- An optional keyed lock may be specified.
- Custom fit polyethylene liner in black, standard with all receptacles.
- Chase Park also available in a Dual-use, side opening receptacle and a single-use, top opening receptacle.
- Recycling litter available with 5", or 10" diameter top openings to collect recyclable material.
- Labels with recycle symbol and specified recyclable material printed on high performance, exterior grade UV protected vinyl, mounted securely to each unit.
- For more information on signage options, visit landscapeforms.com

Finishes

- All metal is finished with Landscape Forms' proprietary Pangard II® polyester powdercoat, a hard yet flexible finish that resists rusting, chipping, peeling, and fading.

To Specify

- Specify Chase Park Litter and select style (side-open, top-open), single or dual-use, and optional opening style and signage.
- Choose powdercoat color, mounting, optional logo band and/or optional lock.
- Chase Park Litters ship fully assembled.

	Style	Diameter	Height	Product Weight
	Top-Opening	24"	39"	166 lbs
	Side-Opening	24"	39"	162 lbs
	Top-Opening with logo band	24"	39"	175 lbs
	10" Top-Opening with signage	24"	39"	167 lbs
	Side-Opening Dual-use unit	24"	39"	163 lbs
	Side-Opening Dual-use with logo band unit	24"	39"	172 lbs

Designed by Kipp Stewart

[Click here](#) for patent information related to this product.

Visit landscapeforms.com for more information. Specifications are subject to change without notice. Landscape Forms supports the Landscape Architecture Foundation at the Second Century level. ©2025 Landscape Forms, Inc. Printed in U.S.A.

landscapeforms.com | specify@landscapeforms.com