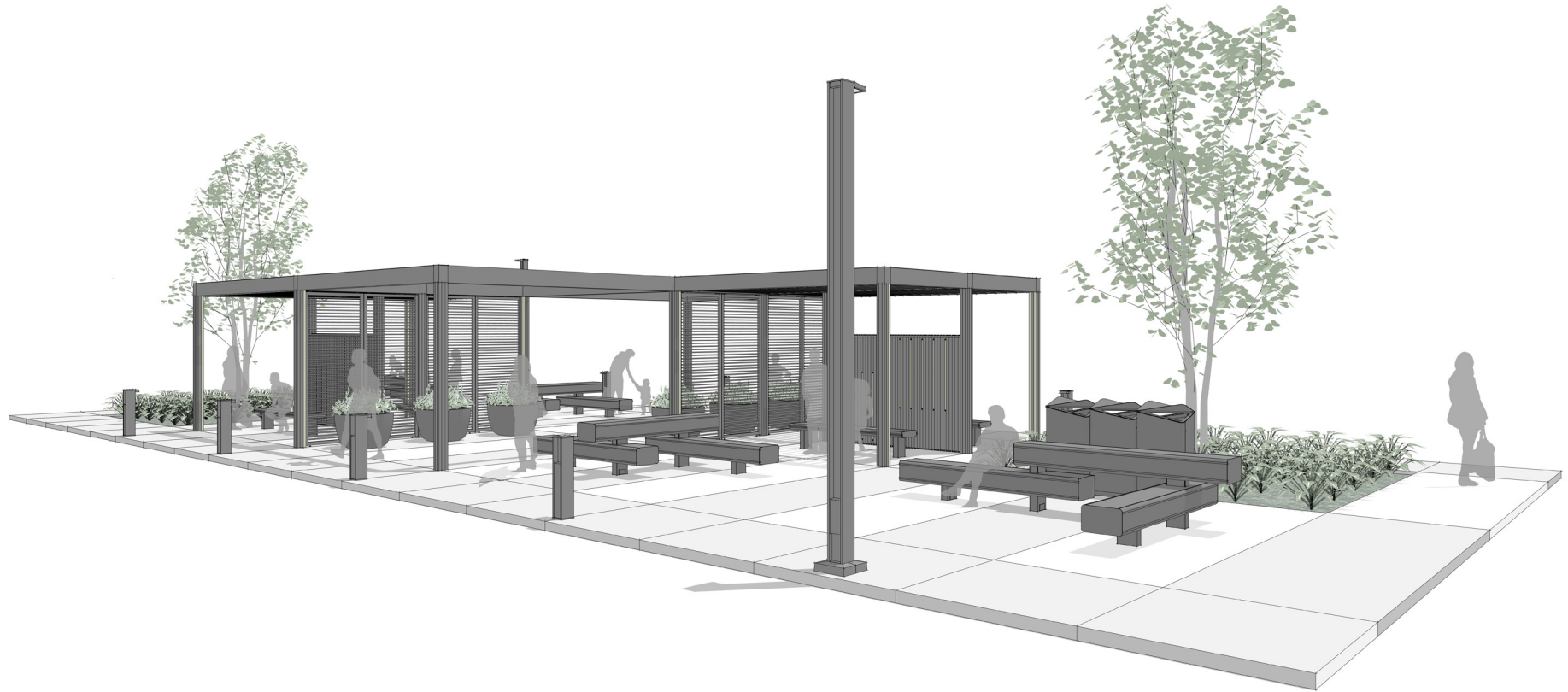


TRAVEL APPLICATION

Regional Station 2 (RS2)



VIEW #1

Travel

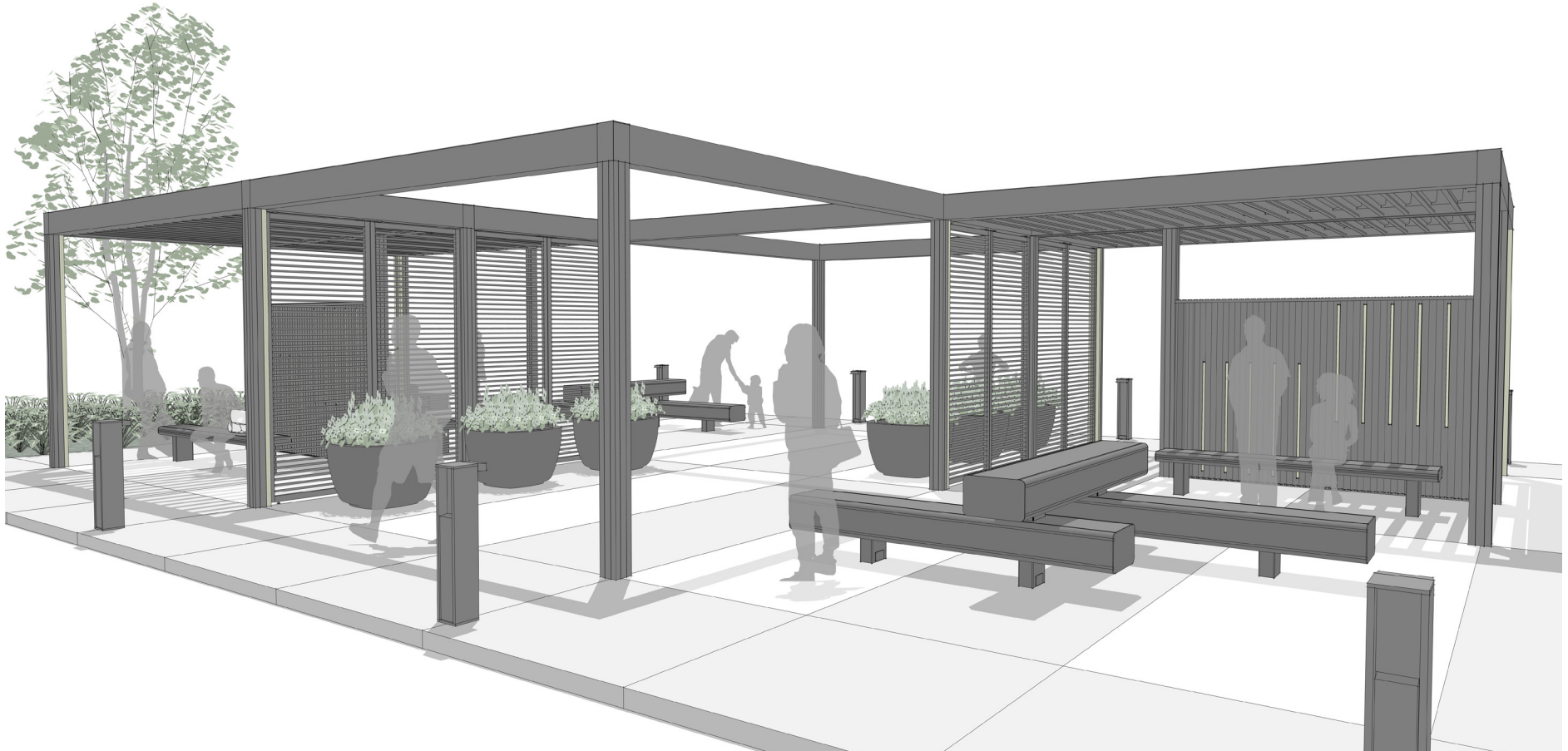
RS2

landscapeforms.com

landscapeforms

TRAVEL APPLICATION

Regional Station 2 (RS2)



VIEW #2

TRAVEL APPLICATION

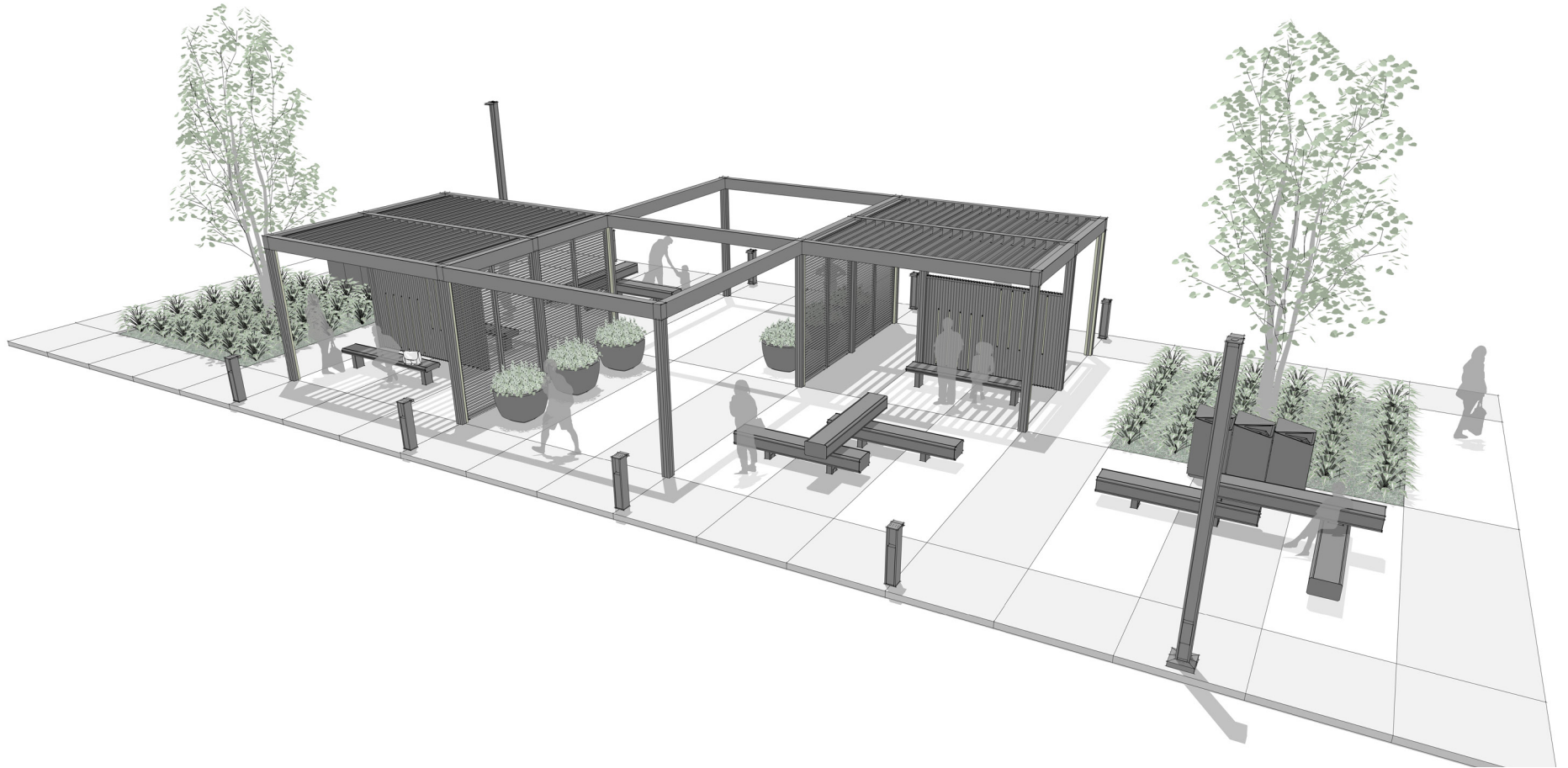
Regional Station 2 (RS2)



VIEW #3

TRAVEL APPLICATION

Regional Station 2 (RS2)



VIEW #4

Travel

RS2

landscapeforms.com

landscapeforms

TRAVEL APPLICATION

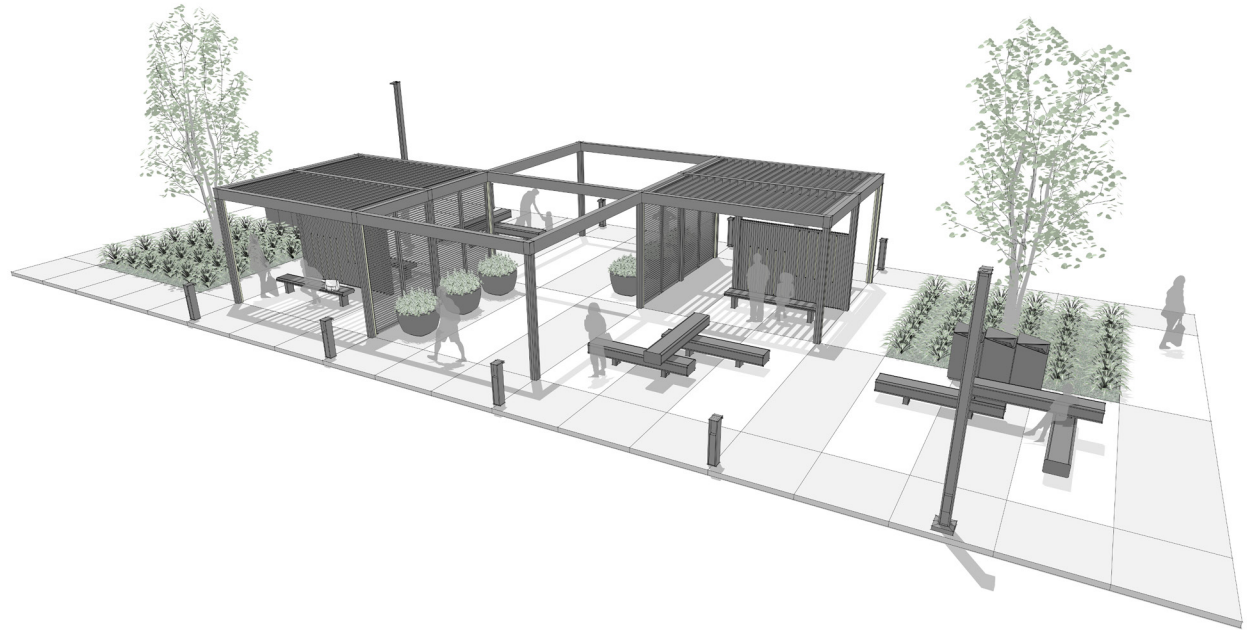
Regional Station 2 (RS2)

PLACE: REGIONAL STATION

An open, multi-modal station developed on a regional scale and paired with a facility that serves rail and bus lines.

PRIMARY INSIGHT: SPARK SOCIAL INTERACTIONS

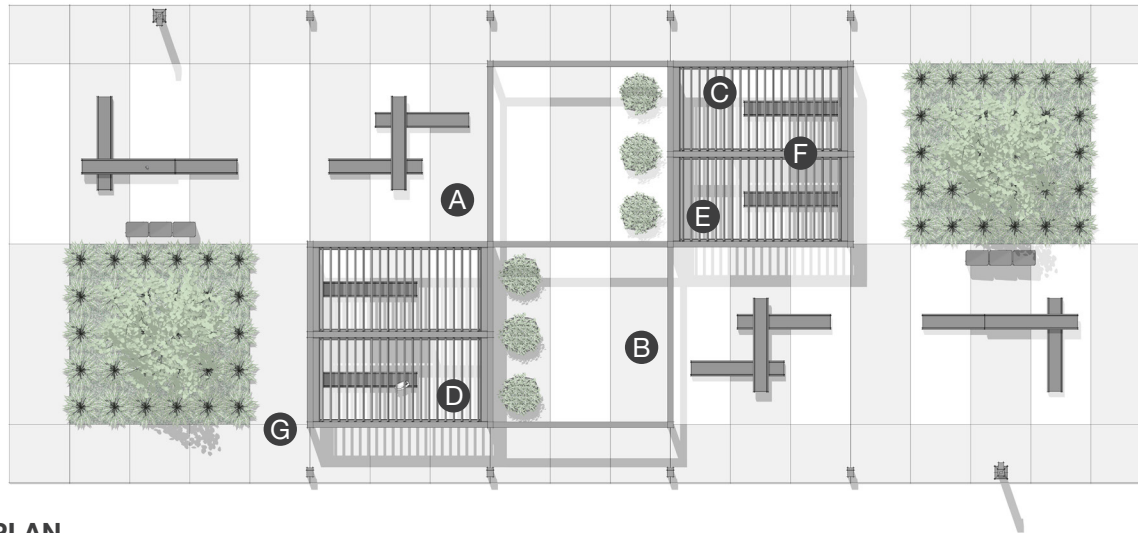
Spark social interactions by including design interventions that connect people to cultivate a memorable and humanized transit process.



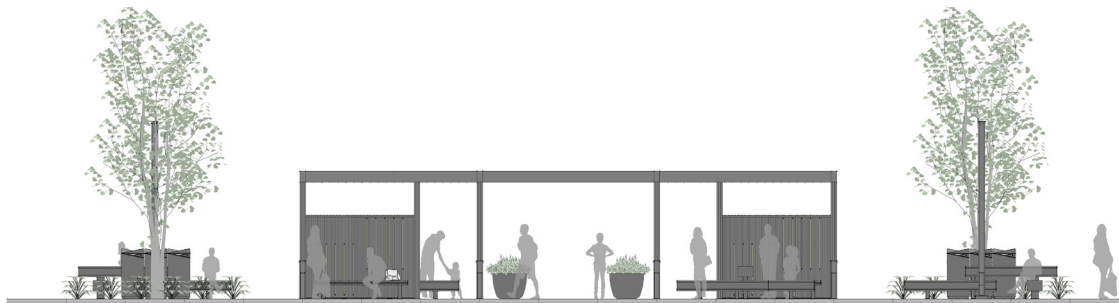
VIEW #4

TRAVEL APPLICATION

Regional Station 2 (RS2)



PLAN



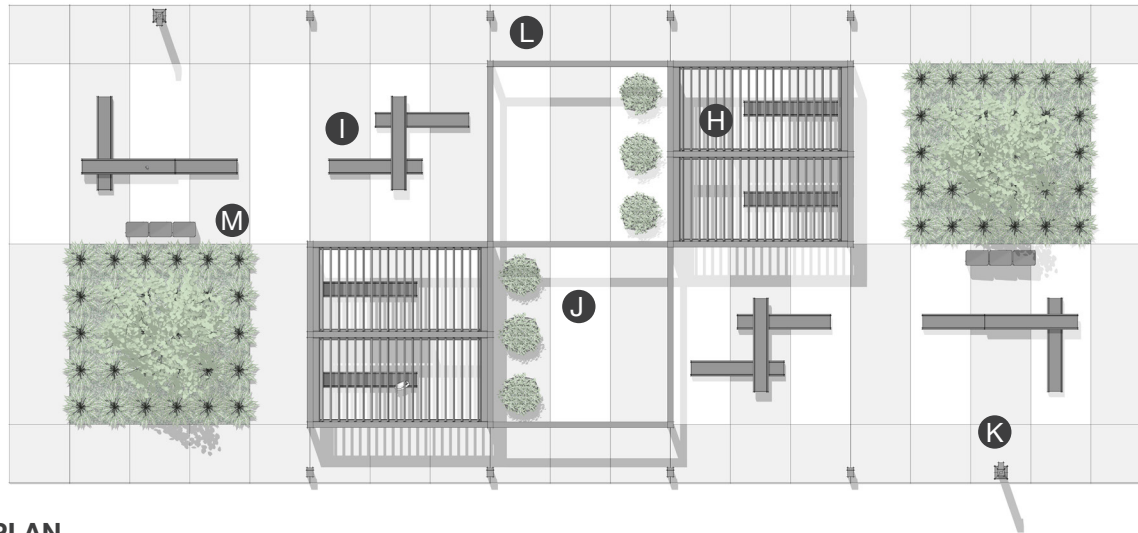
ELEVATION

ELEMENTS, ATTRIBUTES, AND USER EXPERIENCE

- A** This Scenic station design defines queuing and waiting zones with elements such as seating, work surfaces, and lighting.
- B** Mirrored stations provide visibility and access to rail and bus lines at two access points.
- C** Power is delivered through Scenic's posts and beams. Scenic interior lighting contributes to a sense of security during evening or early morning use.
- D** The Scenic louvered roofs provide protection from wind and sun; weather management offers control of sun and shade levels and rain protection.
- E** Scenic louvered panels offer protection from the sun and wind.
- F** Scenic solid panels with lighting inserts add atmosphere and texture to the hardscape and linear nature of transit stations.
- G** Scenic's LED column lighting provides another layer of ambient light and dimension to the space.

TRAVEL APPLICATION

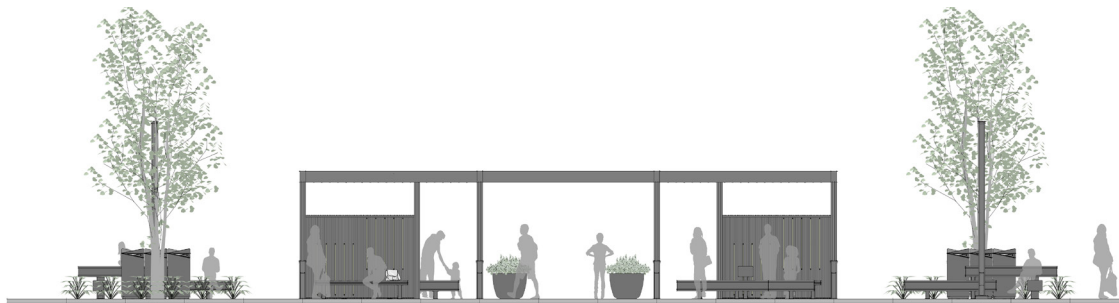
Regional Station 2 (RS2)



PLAN

ELEMENTS, ATTRIBUTES, AND USER EXPERIENCE

- H** **Theory Thin benches** offer short duration seating for commuters awaiting transit.
- I** **Theory Thick benches** provide seating that accommodates multiple postures for longer waits while adding sculptural forms to the station.
- J** **Kornegay Larkspur planters** line the center walkway and add color and natural elements to the station.
- K** Two **Profile area lights** illuminate the station and contribute to a sense of safety and comfort.
- L** **Profile path lights** signal station boundaries for commuters awaiting transit.
- M** **Rockford Litter** receptacles, placed in a convenient location, help to keep the area free of litter and provide ample capacity.



ELEVATION