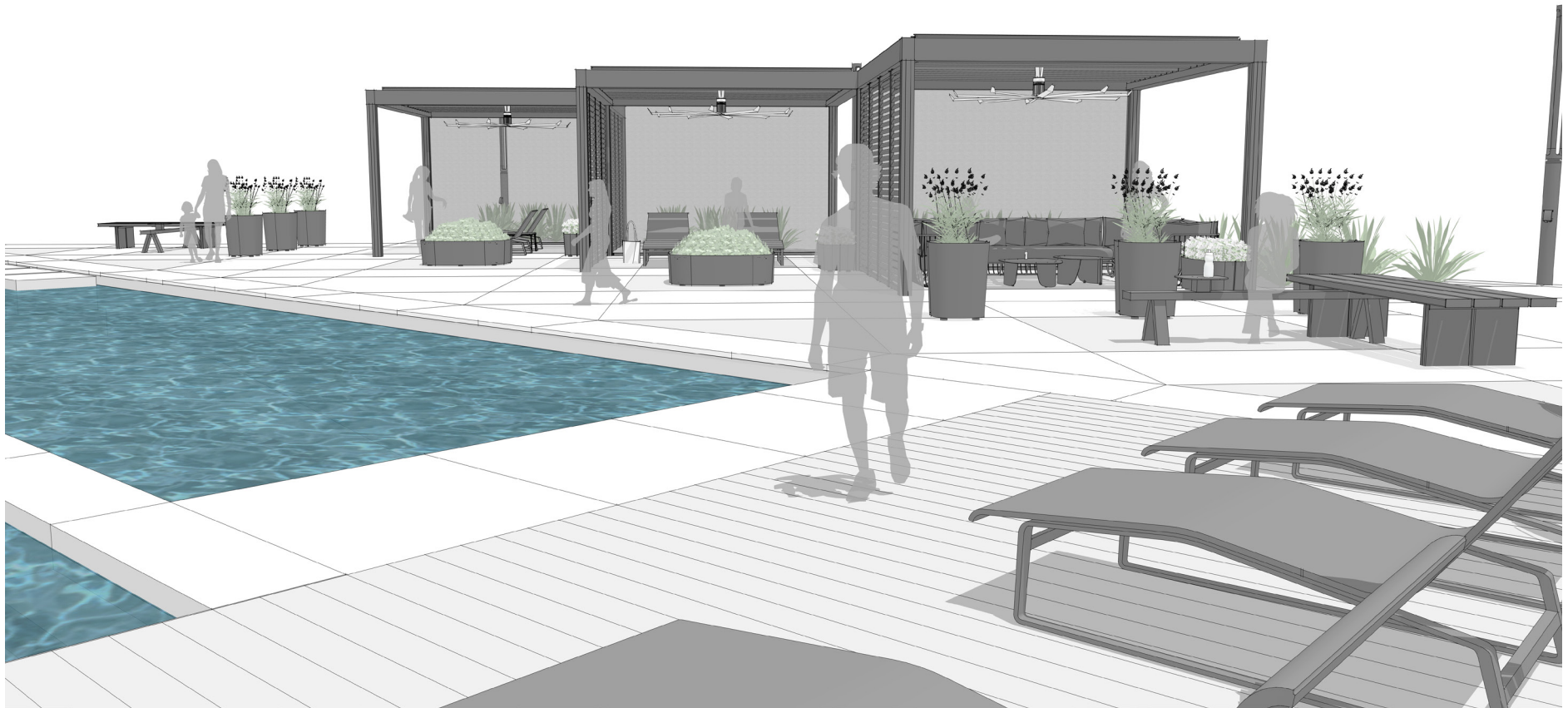


PLAY APPLICATION

Pool Deck (PD)



VIEW #1

PLAY APPLICATION

Pool Deck (PD)



VIEW #2

Play

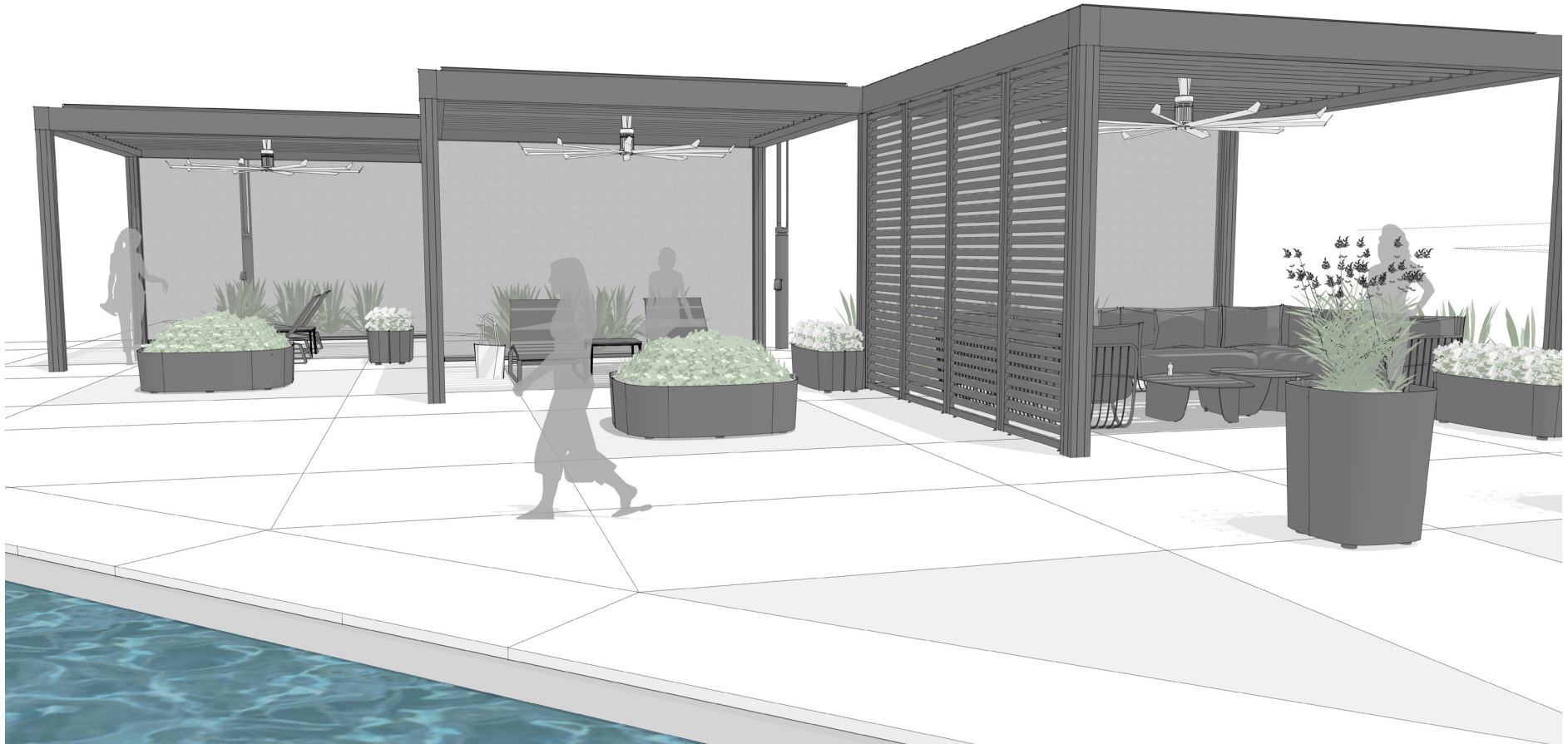
PD

landscapeforms.com

landscapeforms

PLAY APPLICATION

Pool Deck (PD)



VIEW #3

Play

PD

landscapeforms.com

landscapeforms

PLAY APPLICATION

Pool Deck (PD)



VIEW #4

Play

PD

landscapeforms.com

landscapeforms

PLAY APPLICATION

Pool Deck (PD)



VIEW #5

Play

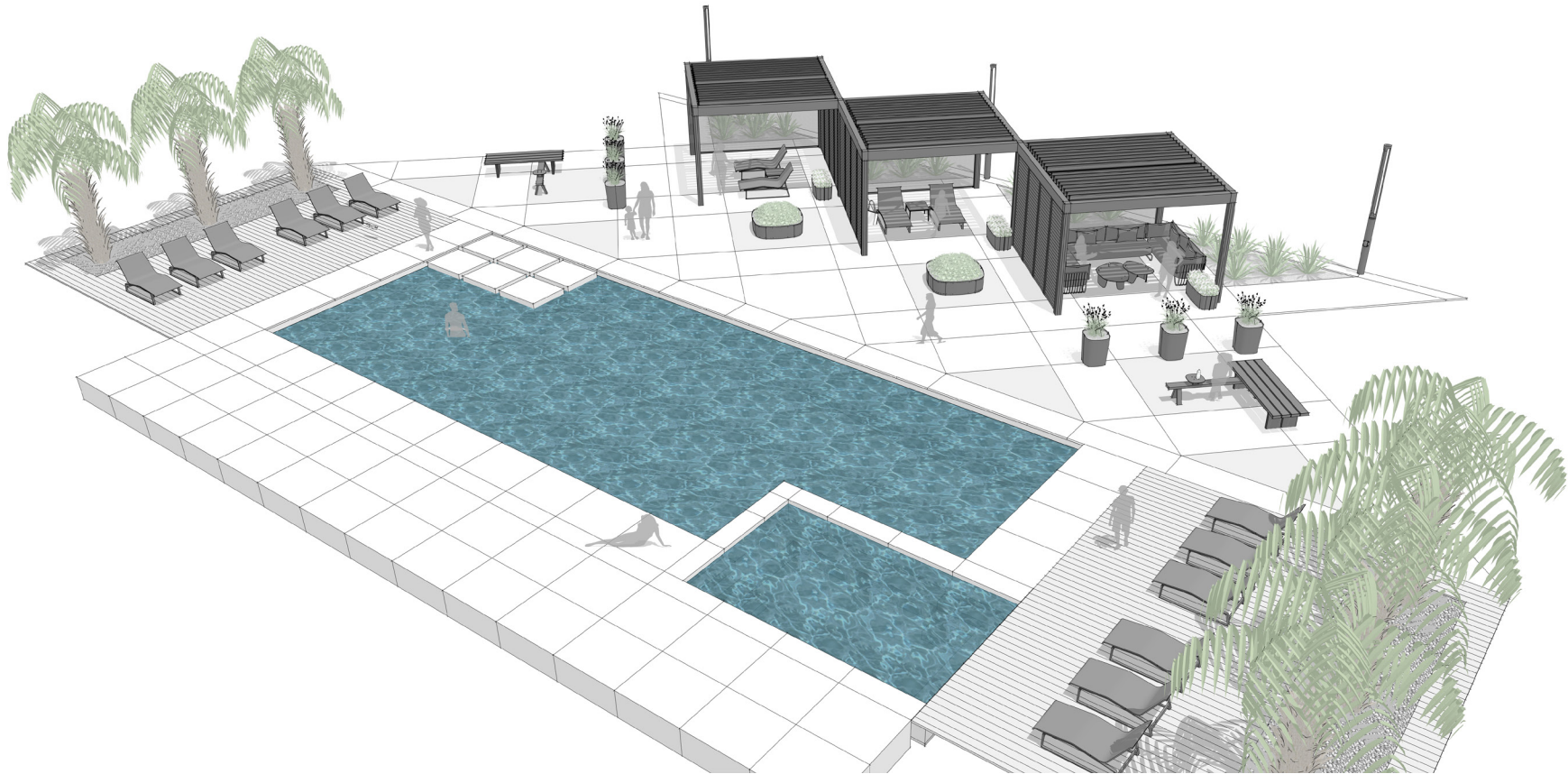
PD

landscapeforms.com

landscapeforms

PLAY APPLICATION

Pool Deck (PD)



VIEW #6

Play

PD

landscapeforms.com

landscapeforms

PLAY APPLICATION

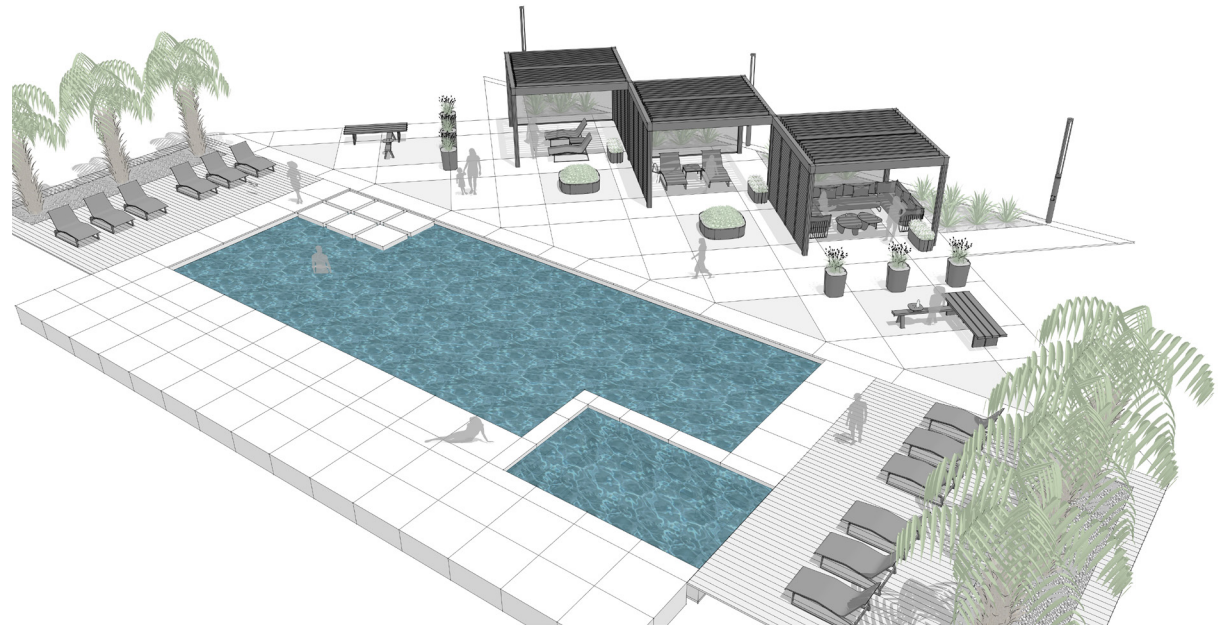
Pool Deck (PD)

PLACE: POOL DECK

A sheltered recreational area directly adjacent to a pool.

PRIMARY INSIGHT: MAKE MEMORABLE EXPERIENCES

By fully engaging multiple senses with physical elements, memorable experiences can be created.



VIEW #6

Play

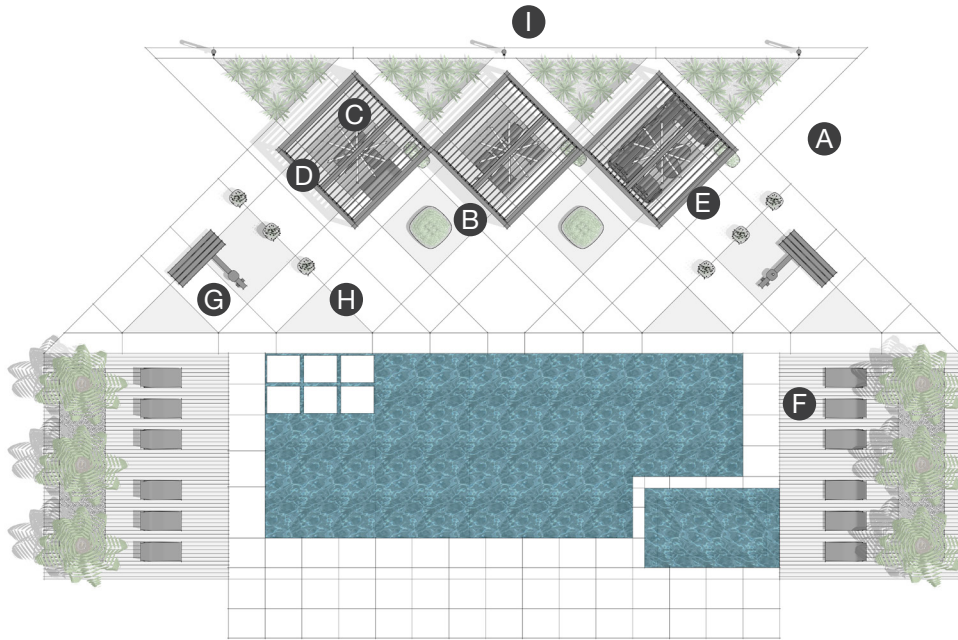
PD

landscapeforms.com

landscapeforms

PLAY APPLICATION

Pool Deck (PD)



PLAN



ELEVATION

ELEMENTS, ATTRIBUTES, AND USER EXPERIENCE

- A** Individual and semi-private oases are created along a pool deck anchored by three [Scenic](#) pergola structures.
- B** Scenic's louvered panels and screens provide privacy yet allow for poolside breezes and sunlight to pass through.
- C** Scenic louvered roofs with fans provide shade and cooling within all three structures.
- D** [Cochran chaise lounges](#) and [Cochran side tables](#) provide an intimate lounging experience under the pergolas.
- E** [Monterey sectionals](#) and [Cora tables](#) enable a more social lounging experience.
- F** Taking advantage of the sun and lining the edges of the pool are [Cochran chaise lounges](#).
- G** [Plains benches](#) provide additional seating and surfaces on the deck.
- H** [Pods planters](#) soften the hardscape of the deck and provide a habitat for colorful flowers and plants.
- I** [Outline column lights](#) provide illumination along the perimeter.