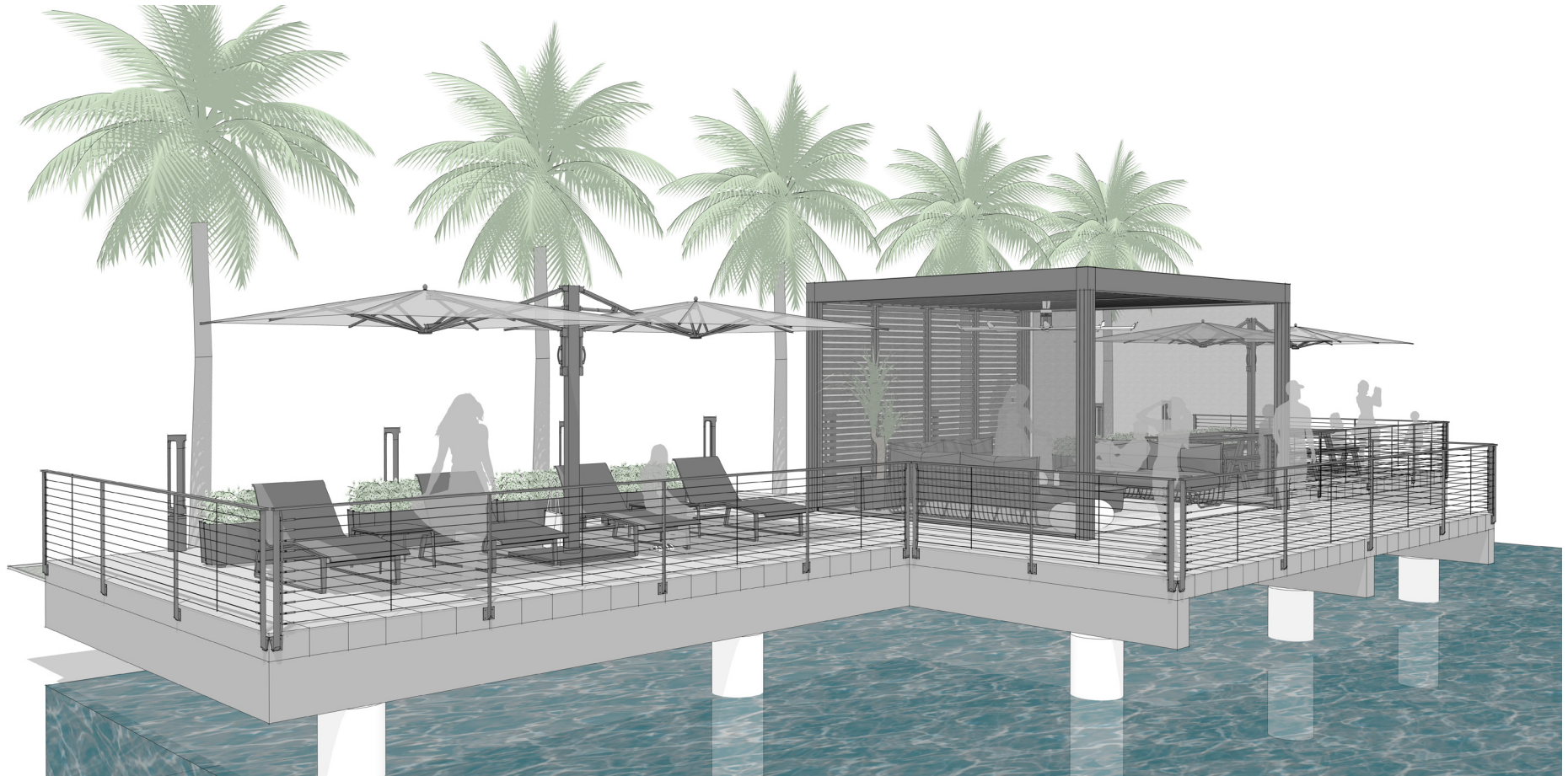


LIVE APPLICATION

Waterfront Deck (WD)



VIEW #1

Live

WD

landscapeforms.com

landscapeforms

LIVE APPLICATION

Waterfront Deck (WD)



VIEW #2

Live

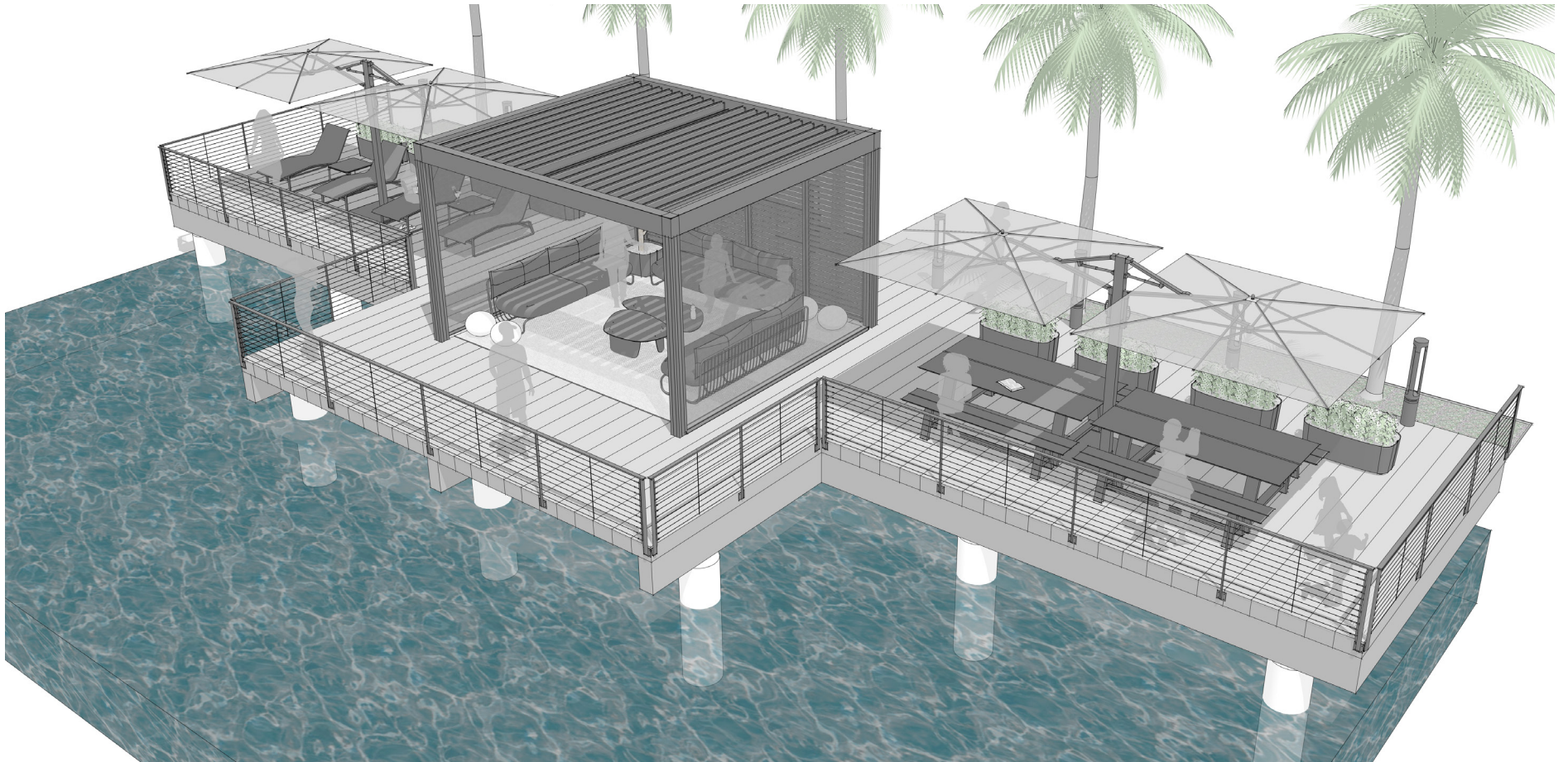
WD

landscapeforms.com

landscapeforms

LIVE APPLICATION

Waterfront Deck (WD)



VIEW #3

Live

WD

landscapeforms.com

landscapeforms

LIVE APPLICATION

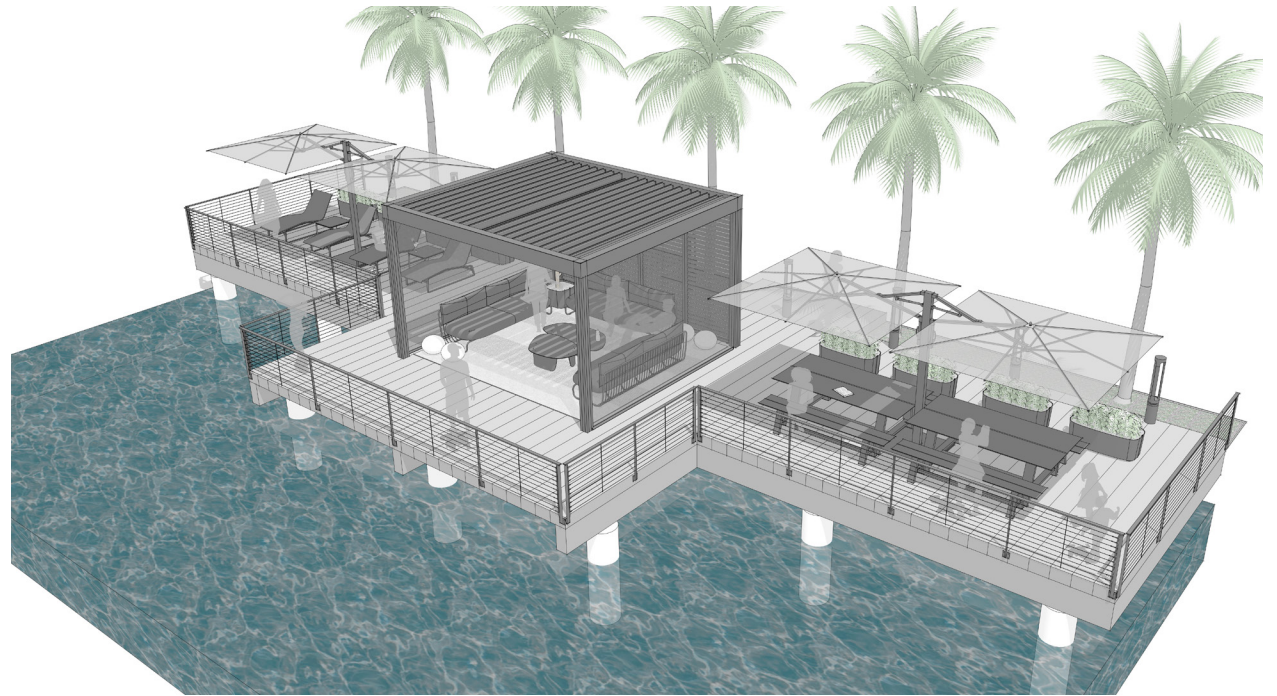
Waterfront Deck (WD)

PLACE: WATERFRONT DECK

A waterfront deck connects the indoors to the outdoors and provides space for communing with the water and socializing.

PRIMARY INSIGHT: ENHANCE IDENTITY AND LIFESTYLE

Nature-rich and immersive outdoor experiences that offer inspiration and enjoyment can enhance well-being, identity, and lifestyle.



VIEW #3

Live

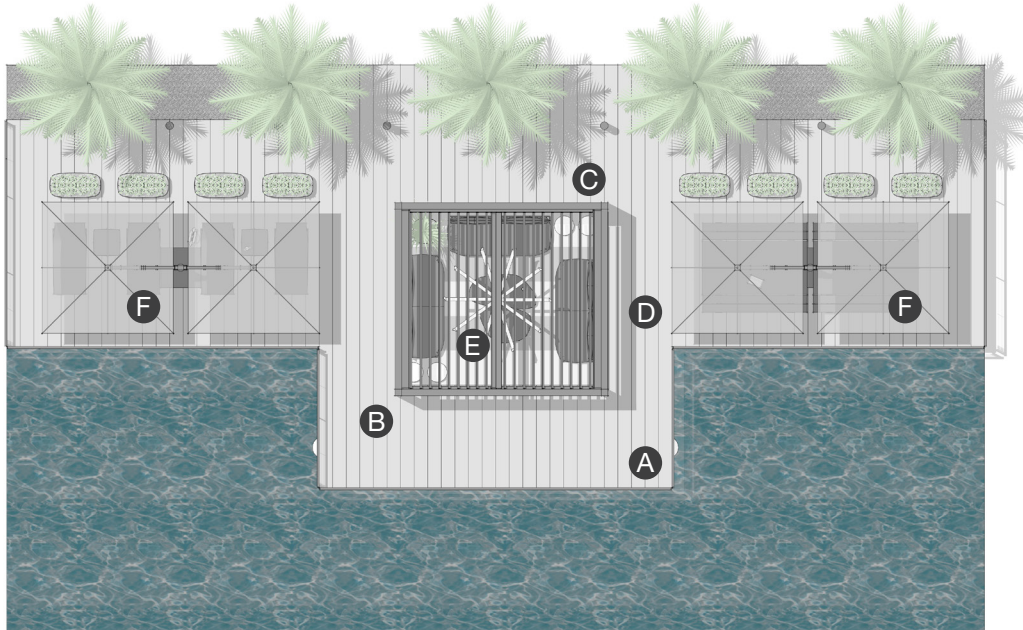
WD

landscapeforms.com

landscapeforms

LIVE APPLICATION

Waterfront Deck (WD)



PLAN



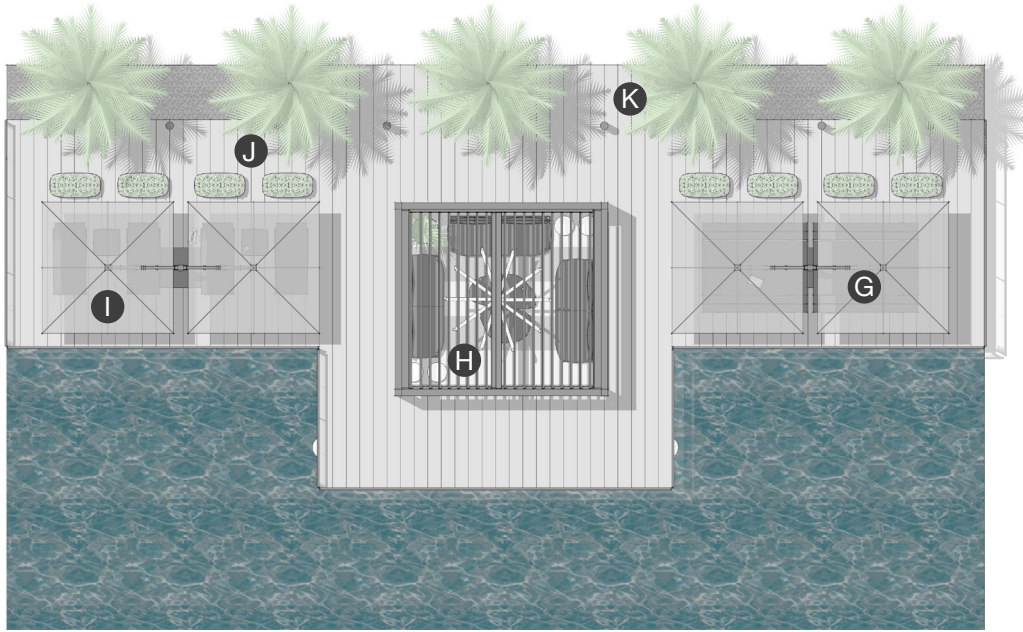
ELEVATION

ELEMENTS, ATTRIBUTES, AND USER EXPERIENCE

- A** Engaging in social activities while in proximity to water brings energy and enrichment to the human experience and stimulates the senses.
- B** The **Scenic** structure creates both a centralized gathering space and zones delineated for lounging, dining, and small gatherings.
- C** Scenic's sleek, contemporary post-and-beam design and back wall panel elevate the outdoor experience, enhancing the luxury of a waterfront deck..
- D** Scenic's louvered panels and screens provide privacy yet allow for poolside breezes and sunlight to pass through.
- E** Power running through the posts and beams allow an overhead fan to cool and circulate air in the central gathering space and can accommodate overhead lighting, monitors, and charging access at Scenic in-line and peninsula tables.
- F** **TUUCI umbrellas** offer shade in the lounge and dining zones. .

LIVE APPLICATION

Waterfront Deck (WD)



ELEMENTS, ATTRIBUTES, AND USER EXPERIENCE

- G** Harvest dining-height tables with Harvest benches gather individuals and groups for communal activity around the tables' generous surfaces. An integrated LED light option extends Harvest's use into the evening.
- H** Monterey sofas and Cora tables create a relaxed and intimate gathering space on the cantilevered deck.
- I** Cochran chaise lounges and Cochran side tables offer people places to relax physically and mentally with a view of the water.
- J** Pods planters define boundaries between the lounging zones and the deck perimeter, and provide a habitat for colorful flowers and plants.
- K** Outline path lights illuminate the deck's perimeter and promote safe use of the deck during the evening.

PLAN



ELEVATION

Live

WD

landscapeforms.com

landscapeforms