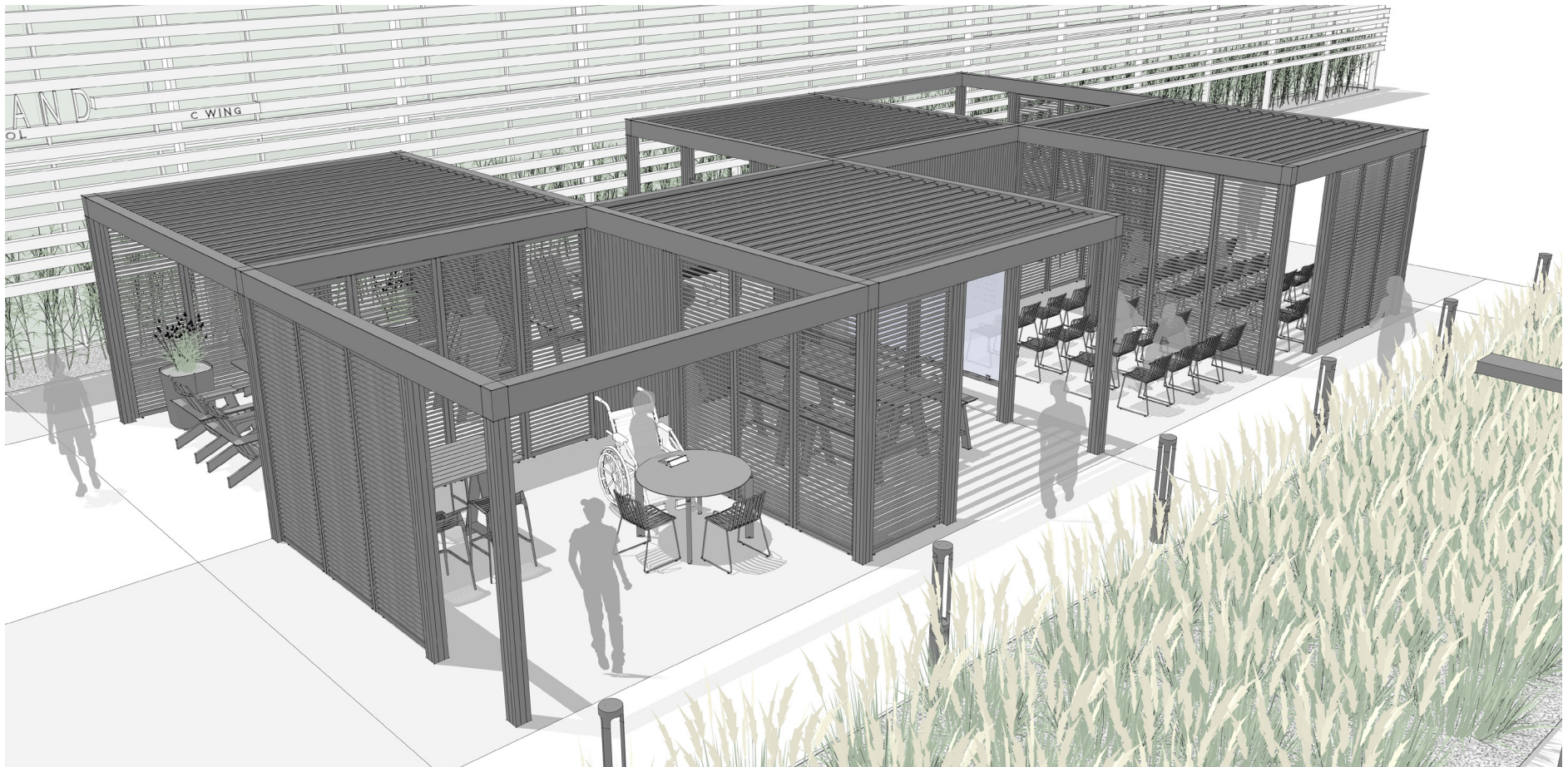


LEARN APPLICATION

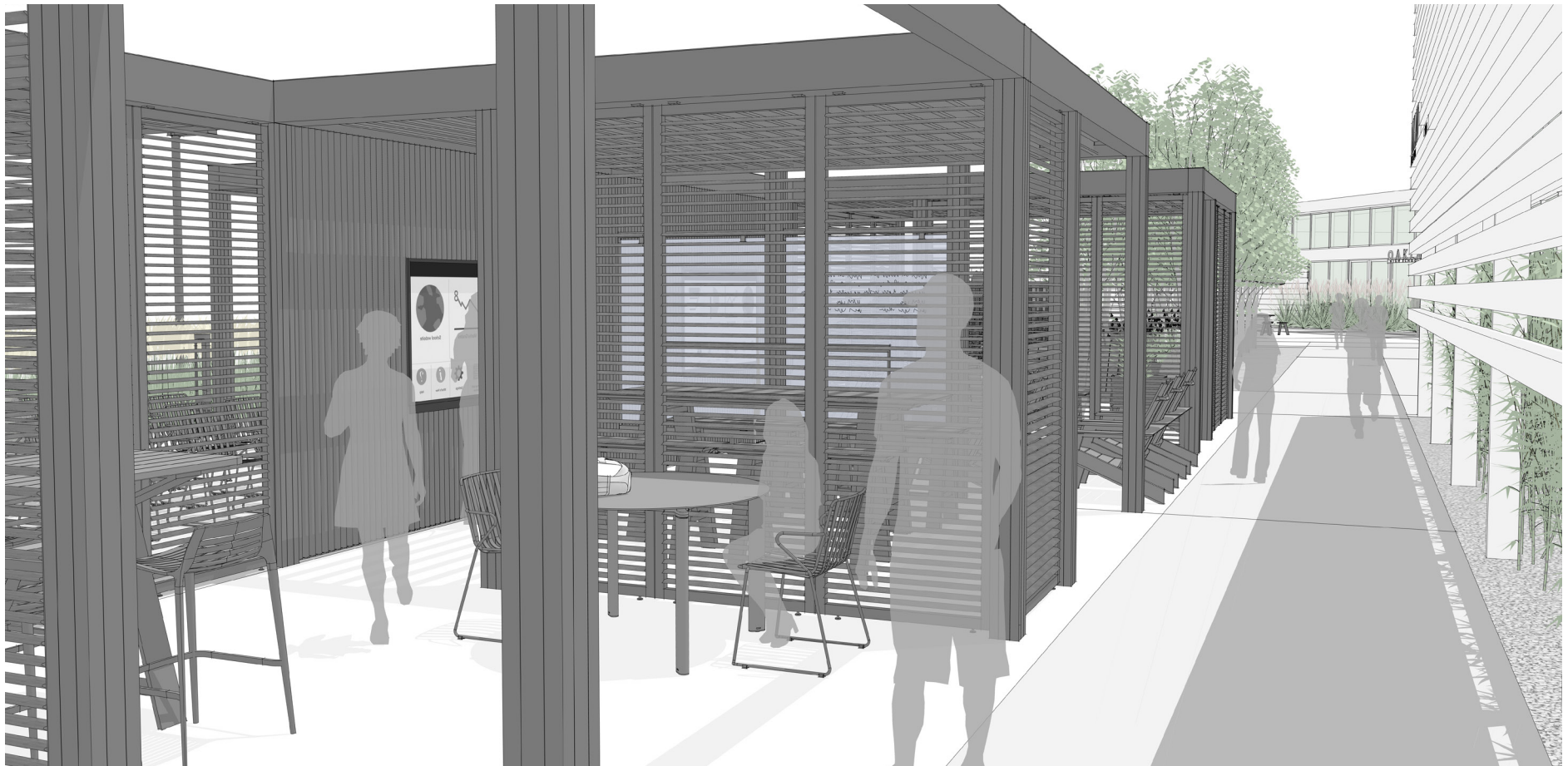
Huddle 3 (H3)



VIEW #1

LEARN APPLICATION

Huddle 3 (H3)



VIEW #2

LEARN APPLICATION

Huddle 3 (H3)



VIEW #3

LEARN APPLICATION

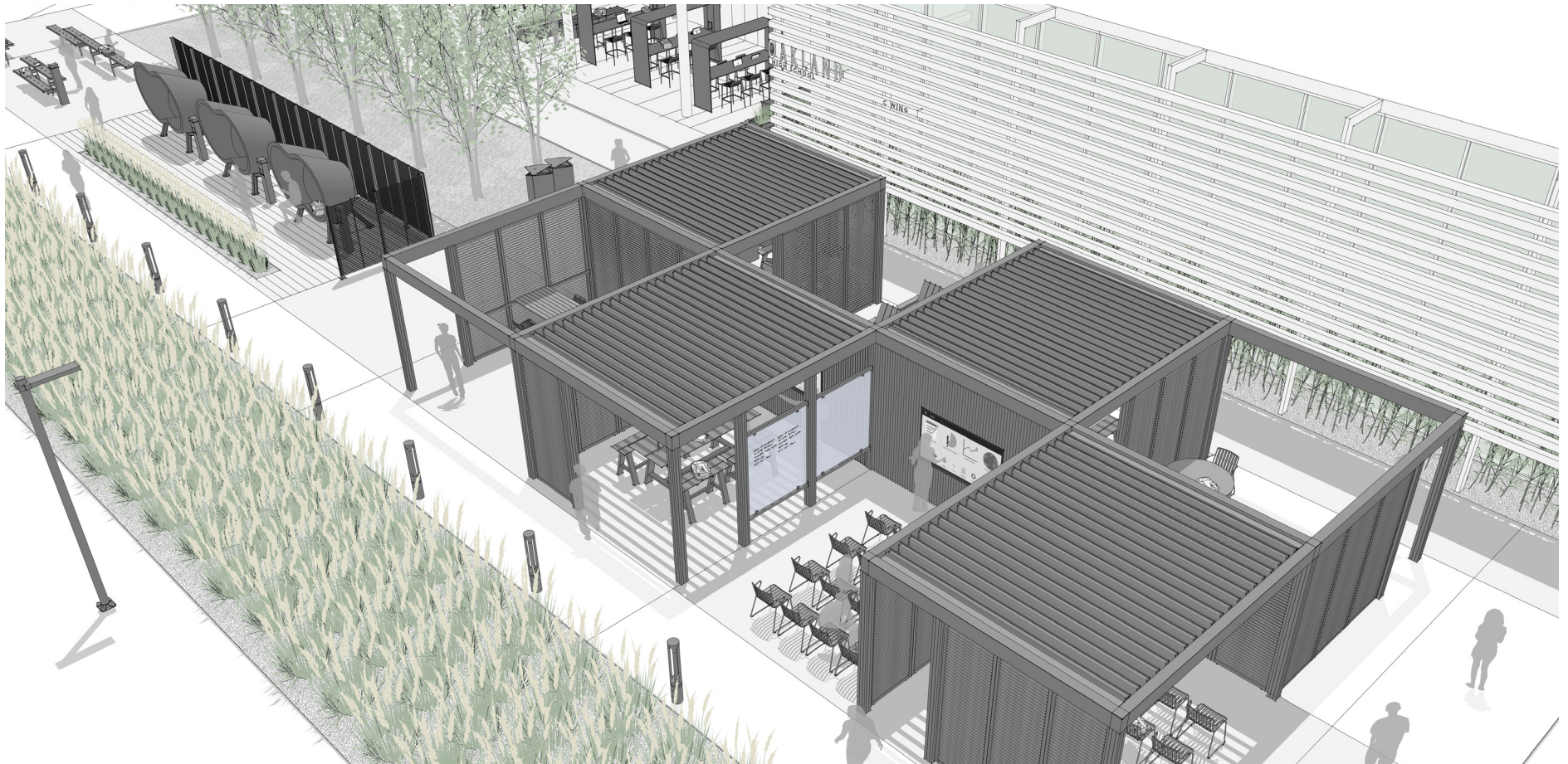
Huddle 3 (H3)



VIEW #4

LEARN APPLICATION

Huddle 3 (H3)



VIEW #5

LEARN APPLICATION

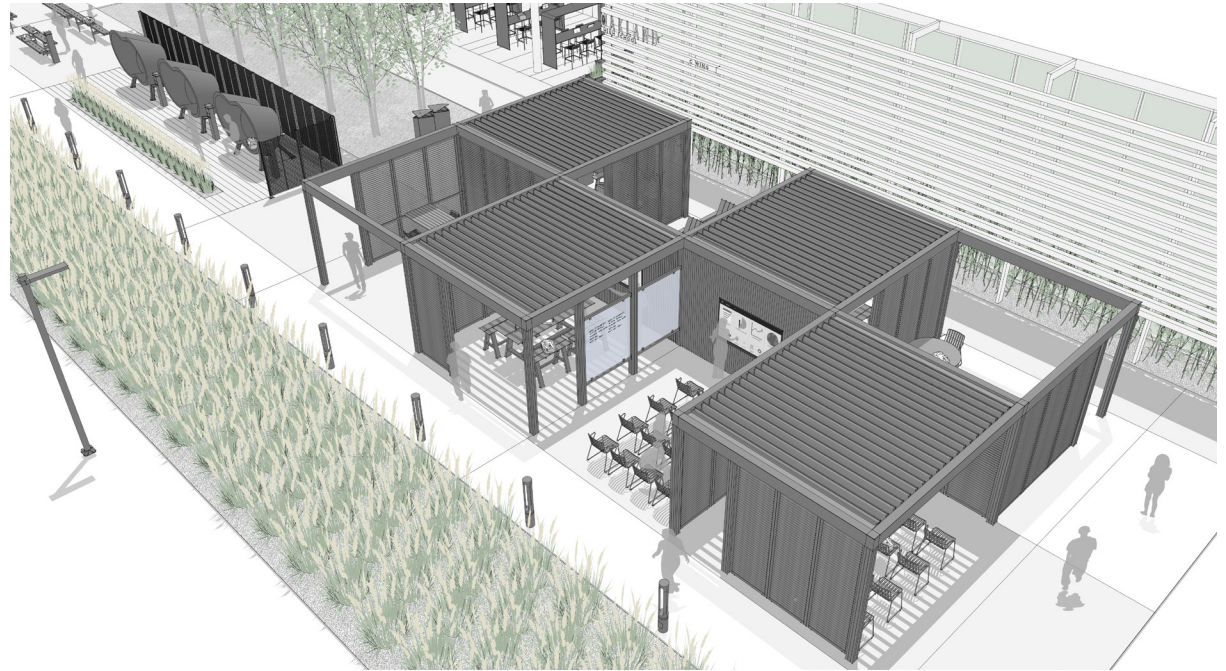
Huddle 3 (H3)

PLACE: HUDDLE

A Huddle is a space adjacent to hubs optimized for small group gathering and social engagement.

PRIMARY INSIGHT: STIMULATE SOCIAL INTERACTION AND CONTINUOUS LEARNING

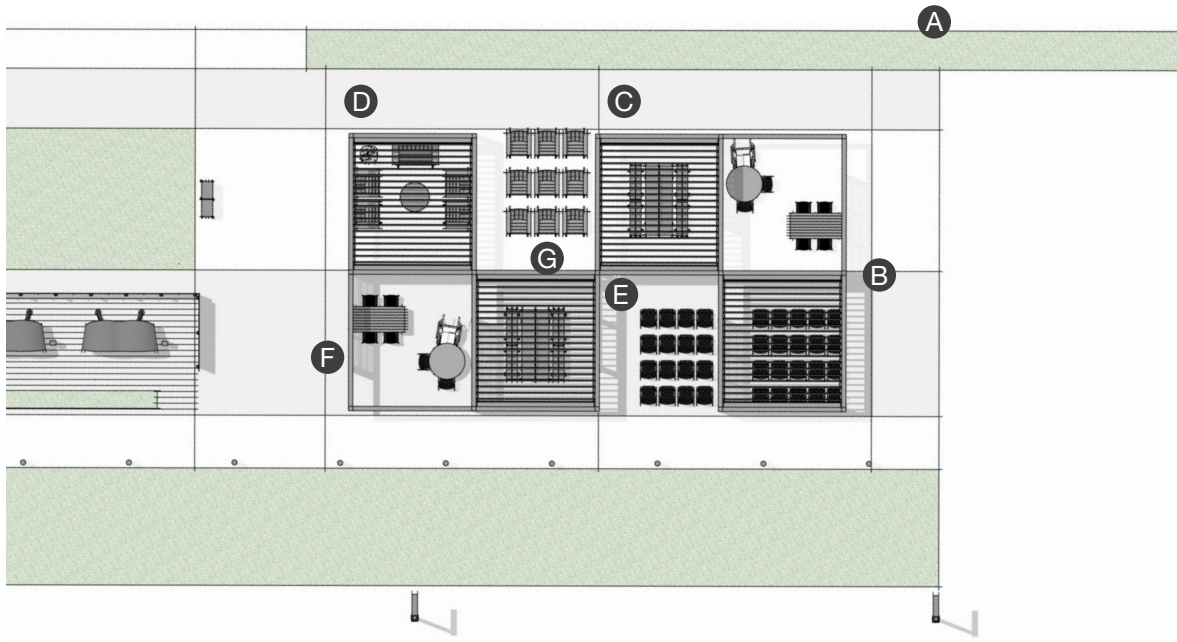
Natural postures and comfortable settings encourage face-to-face connections, stimulate social interaction, and facilitate continuous learning.



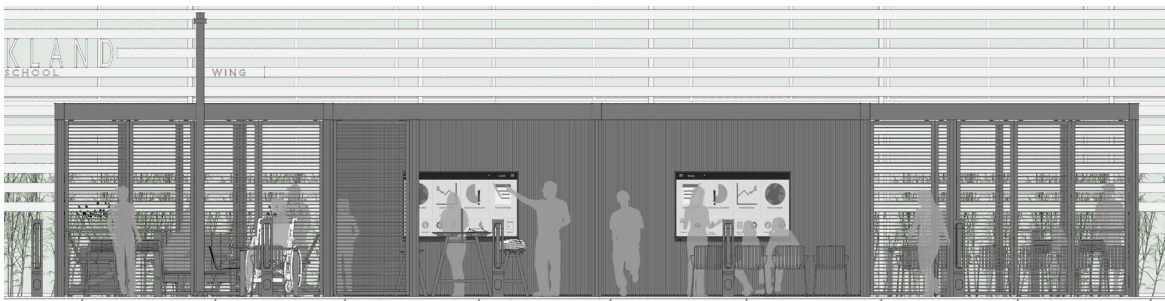
VIEW #5

LEARN APPLICATION

Huddle 3 (H3)



PLAN



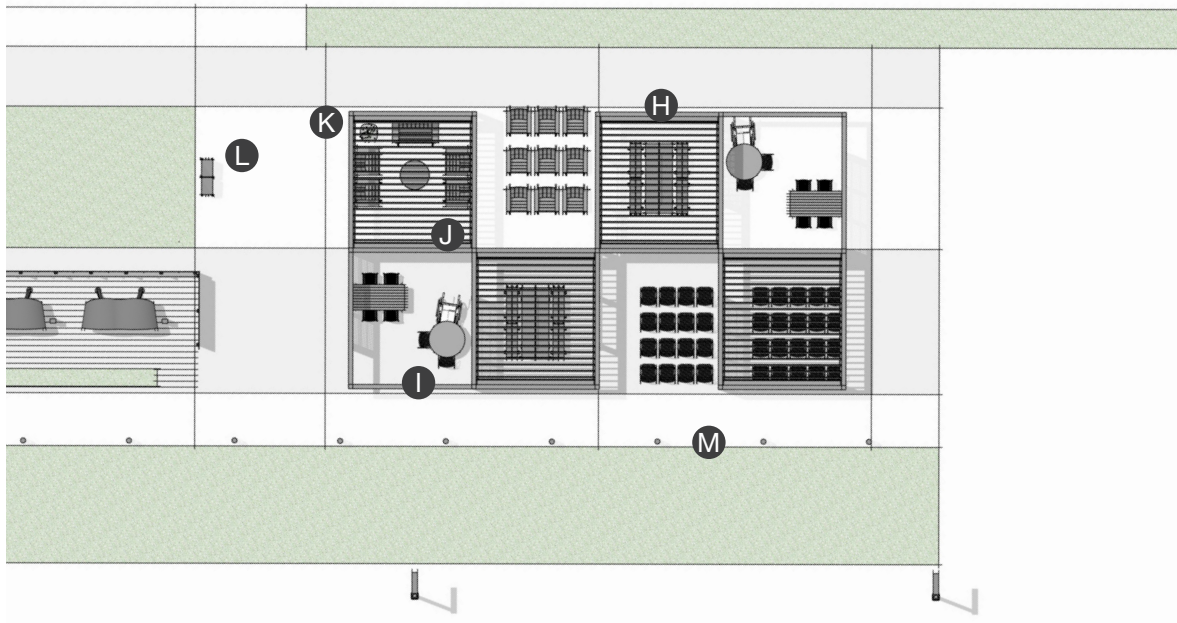
ELEVATION

ELEMENTS, ATTRIBUTES, AND USER EXPERIENCE

- A** A Huddle is typically situated near a plaza or larger assembly point to facilitate small breakouts from large group gatherings.
- B** The furniture configurations encourage collaboration among multiple groups through face-to-face social interactions.
- C** Scenic adaptive structures create Huddle zones between classroom spaces.
- D** Scenic louvered panels create a sense of enclosure balanced with an open feel and fresh air circulation. They also shade interiors and maximize privacy to aid in student focus.
- E** Scenic glass panels provide a markerboard surface for group note-taking.
- F** Scenic peninsula tables and Chipman stools create a work area to support individual or group learning.
- G** Scenic posts and beams route electricity to power lights, display monitors, and charging ports.

LEARN APPLICATION

Huddle 3 (H3)



PLAN



ELEVATION

ELEMENTS, ATTRIBUTES, AND USER EXPERIENCE

- H** Harvest tables and Harvest benches facilitate collaborative study and comfortable postures.
- I** Contour tables provide inclusive access and, paired with Every Day Chairs, support individual short-term study and socialization.
- J** A more relaxed setting is accommodated by a Harvest side table and Americana seating.
- K** Pods planters provide a habitat for colorful flowers and plants.
- L** Rockford Litter receptacles, placed in a convenient location, help to keep the area free of litter and provide ample capacity.
- M** Outline path lights illuminate and define the outer perimeter.