

LEARN APPLICATION

Classroom 3-4 (C34)



VIEW #1

LEARN APPLICATION

Classroom 3-4 (C34)



VIEW #2

Learn

C34

landscapeforms.com

landscapeforms

LEARN APPLICATION

Classroom 3-4 (C34)



VIEW #3

Learn

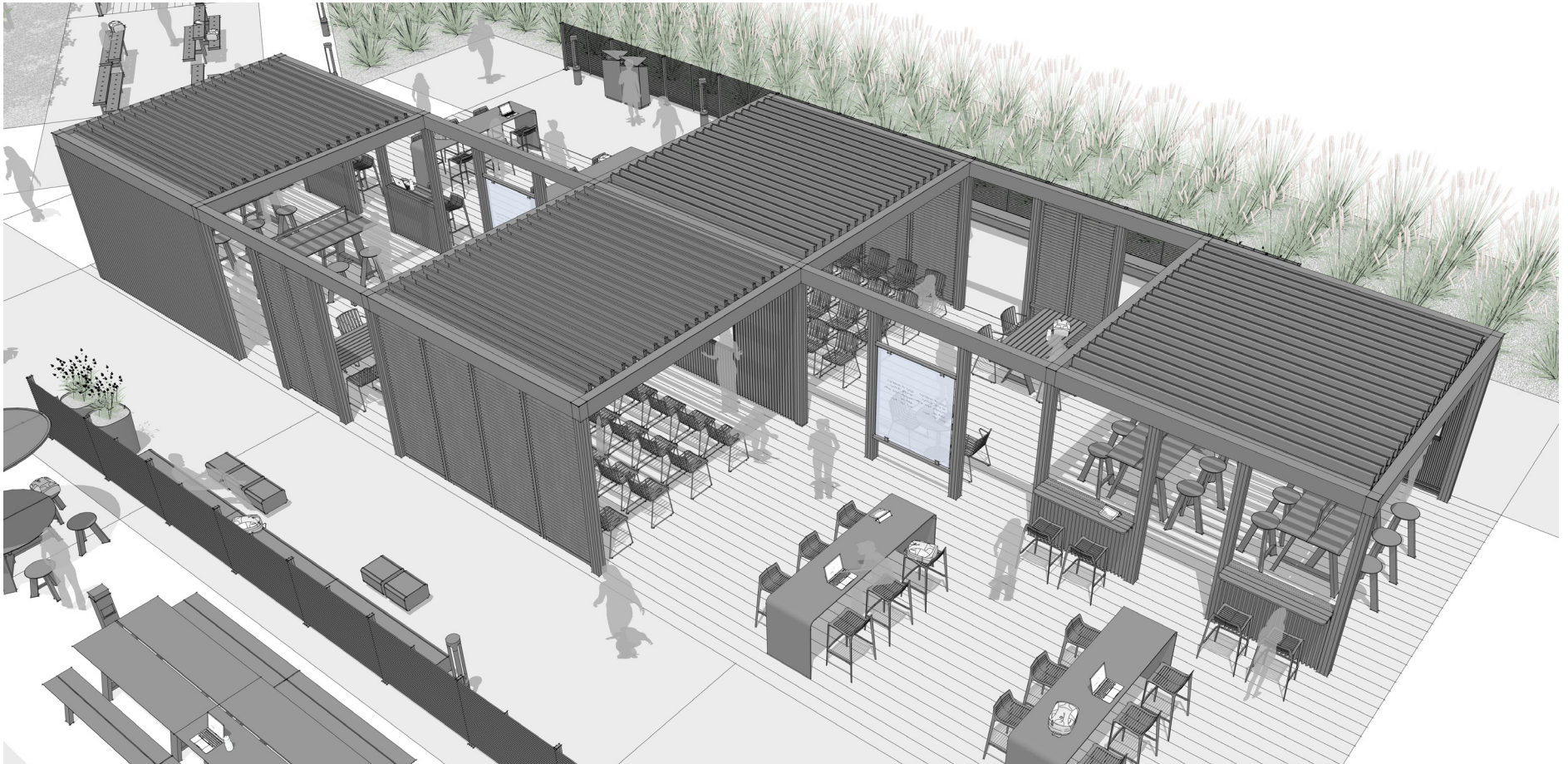
C34

landscapeforms.com

landscapeforms

LEARN APPLICATION

Classroom 3-4 (C34)



VIEW #4

LEARN APPLICATION

Classroom 3-4 (C34)

PLACE: CLASSROOM

An outdoor classroom is an area designed to support groups as they gather to learn, present, and discuss.

PRIMARY INSIGHT: ENCOURAGE ACTIVE LEARNING

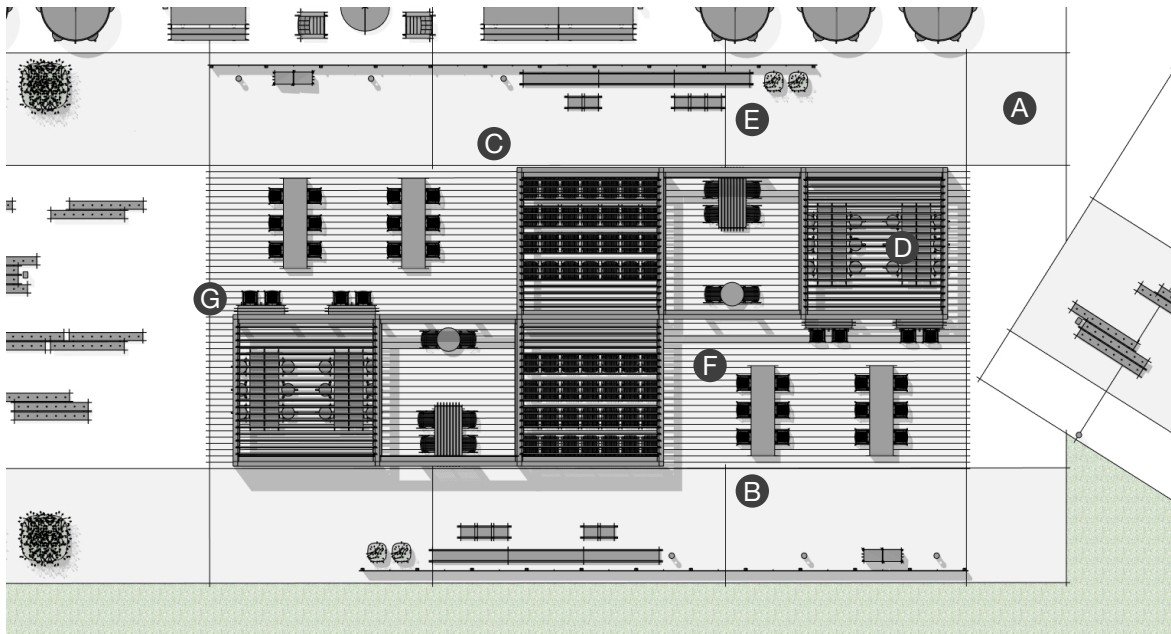
Well-designed environments can encourage a modern, active approach to education by supporting effective presentation, collaboration, and socialization methods.



VIEW #4

LEARN APPLICATION

Classroom 3-4 (C34)



PLAN



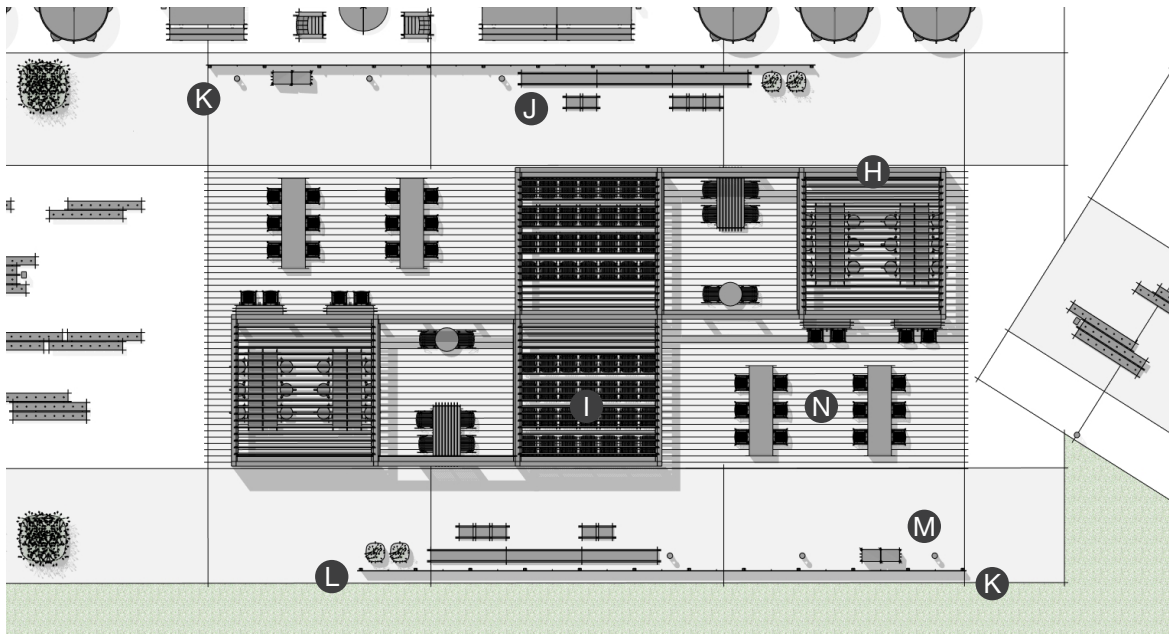
ELEVATION

ELEMENTS, ATTRIBUTES, AND USER EXPERIENCE

- A** The Classroom layout supports lectures and group presentations.
- B** The furniture configurations encourage collaboration among multiple groups through face-to-face social interactions and support a variety of postures.
- C** **Scenic** adaptive structures create high performance learning settings by incorporating electrical wiring to power lights, display monitors, and charging ports to stay connected, and support modern teaching tools while outdoors.
- D** The Scenic louvered roof protects students from the elements while reducing glare on digital devices.
- E** Scenic solid and louvered panels shade interiors and maximize privacy.
- F** Scenic glass panels act as markerboards to support collaborative learning and presentations.
- G** Scenic in-line tables with **Chipman stools**, and peninsula tables with **Every Day Chairs**, integrate with the Scenic structure to create working, reading, and perching spots.

LEARN APPLICATION

Classroom 3-4 (C34)



PLAN



ELEVATION

ELEMENTS, ATTRIBUTES, AND USER EXPERIENCE

- H** Harvest tables with Harvest stools support group based active learning.
- I** Every Day Chairs create an efficient classroom layout.
- J** Theory Thick benches provide areas for students to take a break between classes and activities.
- K** LINE panels help define, and Outline bollards illuminate, the edge of the space.
- L** Pods planters provide a habitat for colorful flowers and plants.
- M** Conveniently placed Rockford Litter receptacles help to keep the area free of litter and provide ample capacity.
- N** Go OutdoorTables with Chipman stools provide additional, flexible learning settings for students while being able to provide them with the ability to charge their devices.