

# CARE APPLICATION

## HEALING GARDEN 2 (HG2)

---



VIEW #1

---

Care

HG2

[landscapeforms.com](http://landscapeforms.com)

landscapeforms

# CARE APPLICATION

## HEALING GARDEN 2 (HG2)

---

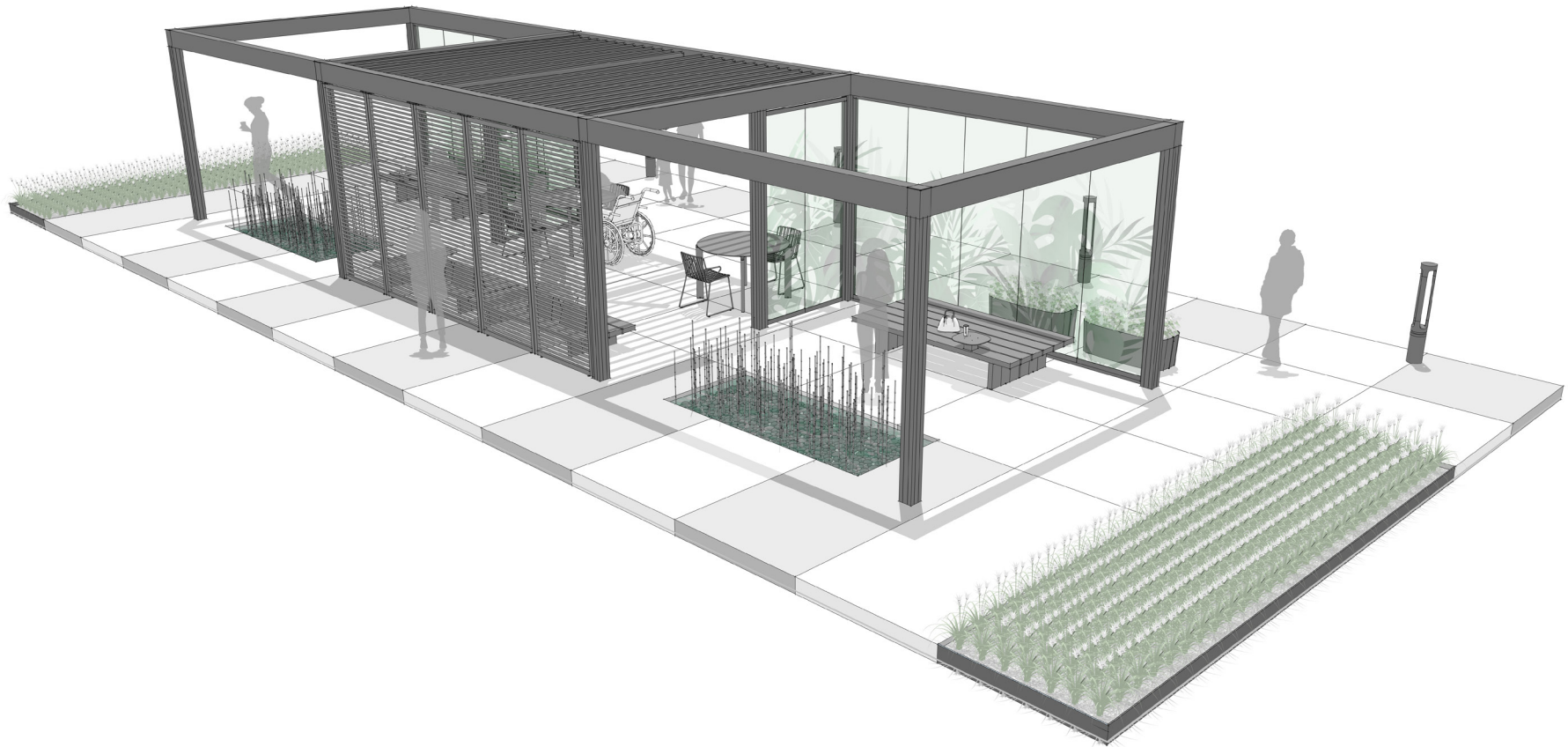


VIEW #2

# CARE APPLICATION

## HEALING GARDEN 2 (HG2)

---



VIEW #3

---

Care

HG2

[landscapeforms.com](http://landscapeforms.com)

landscapeforms

# CARE APPLICATION

## HEALING GARDEN 2 (HG2)

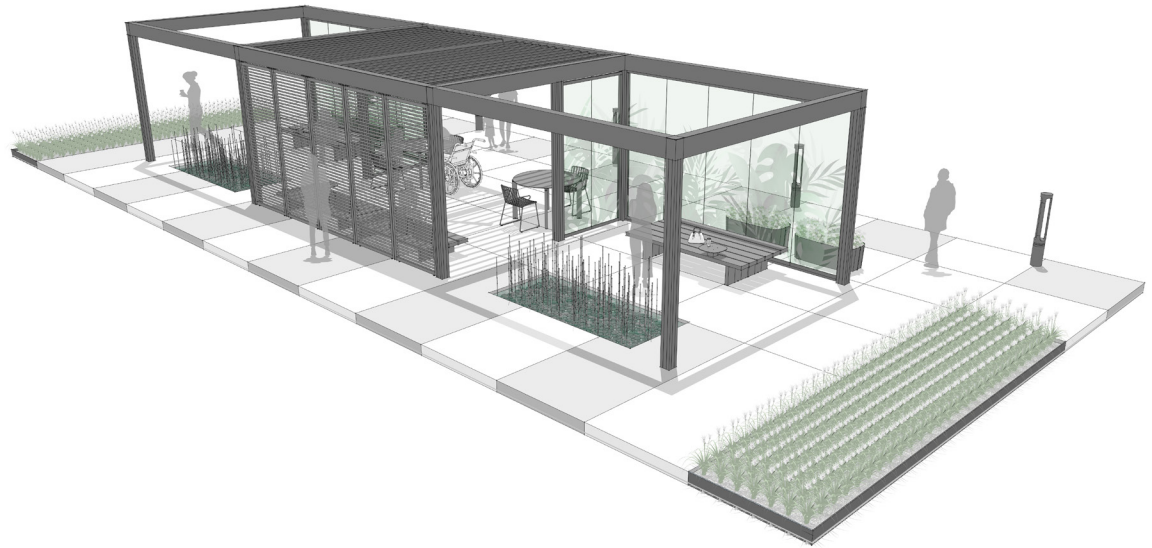
---

### PLACE: HEALING GARDEN

A serene area in which design and natural elements engage the senses through color, touch, sight, and sound.

### PRIMARY INSIGHT: NURTURE HEALING

Connect patients, staff, and visitors with natural light and fresh air to nurture healing, provide moments of respite, and establish a healthy mind-body balance.



VIEW #3

---

Care

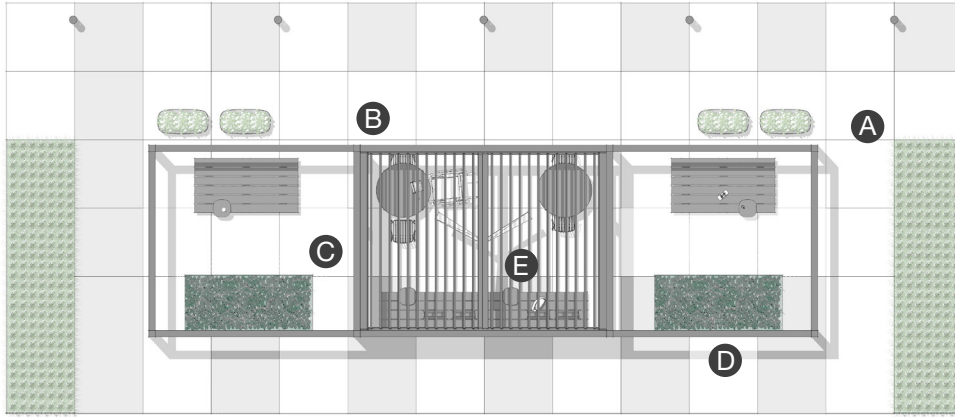
HG2

[landscapeforms.com](http://landscapeforms.com)

landscapeforms

# CARE APPLICATION

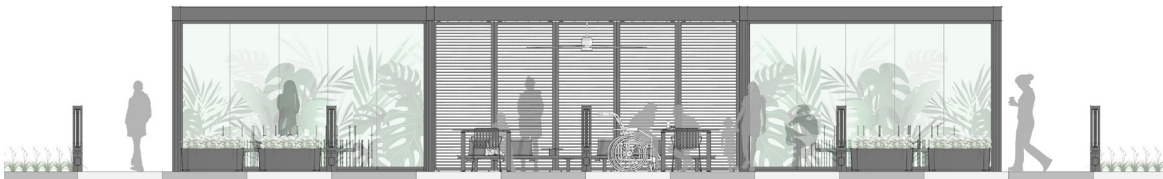
## HEALING GARDEN 2 (HG2)



PLAN

### ELEMENTS, ATTRIBUTES, AND USER EXPERIENCE

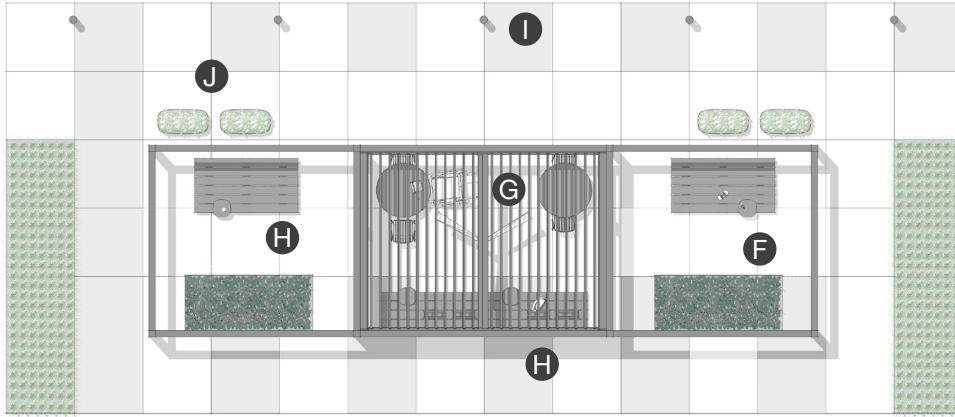
- A** Perimeter gardens offer an outward-facing view to people desiring a peaceful, secluded experience.
- B** An abundance of Scenic glass and louvered panels bring tranquility and soft surfaces to the structure.
- C** Scenic open and louvered roofs give people options for shade and unobstructed views to the sky. Louvered roofs provide protection from wind and sun; weather management offers control of sun and shade levels and rain protection.
- D** Water features introduce a calming focal point.
- E** Power for the overhead fans is delivered through Scenic's posts and beams. Powered Scenic spaces can also accommodate lighting and access points to charge devices.



ELEVATION

# CARE APPLICATION

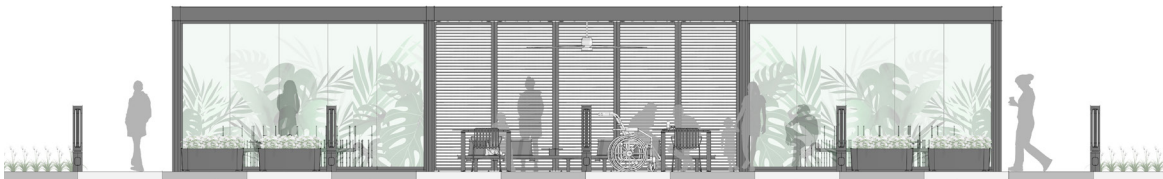
## HEALING GARDEN 2 (HG2)



PLAN

### ELEMENTS, ATTRIBUTES, AND USER EXPERIENCE

- F** Generous circulation aids people using wheelchairs or walkers.
- G** An open, centrally located seating area for visiting and sharing meals features [Contour tables](#) and [Every Day Chairs](#).
- H** [Plains benches](#) ground the meditation spaces and invite people to enjoy the sounds of the water features.
- I** [Outline path lights](#) provide wayfinding and illuminate the walking path.
- J** [Pods planters](#) bring plants and flowers into the central seating area.



ELEVATION