

TRANSIT APPLICATION

WAITING AND QUEUING – URBAN STATION 3 (W-U3)



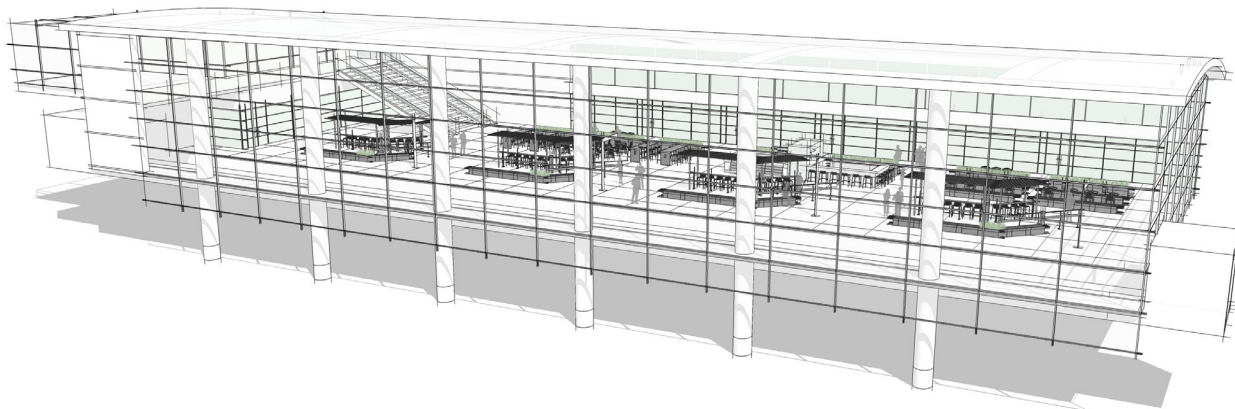
VIEW #1



VIEW #2



VIEW #3



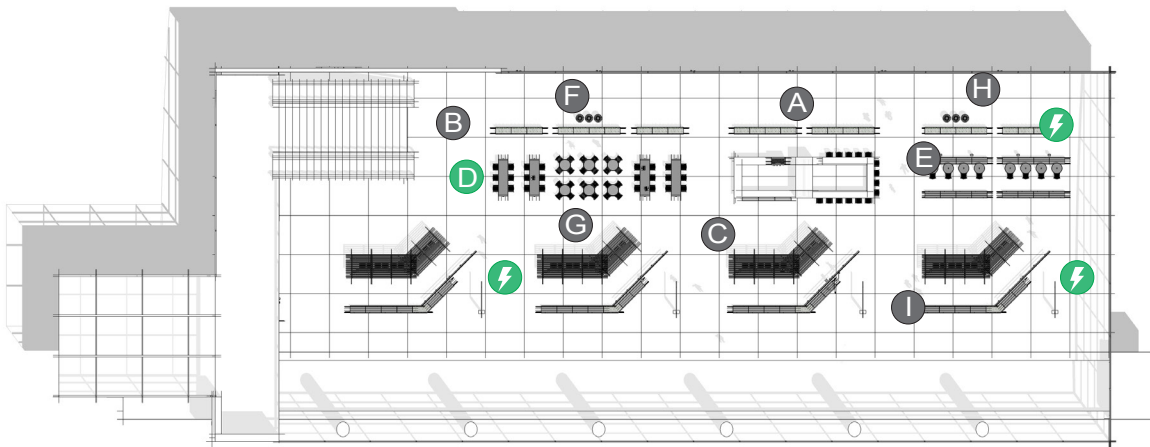
PLACE:
WAITING AND QUEUING
URBAN STATION

A waiting and queuing area within an urban station is a large sheltered train, light rail, and/or bus depot developed on an urban scale with dining and retail amenities.

PRIMARY INSIGHT:
ENABLE PRODUCTIVITY

By providing frameworks for transit that offer provisions to accommodate basic human needs and enable continuous productivity, a fulfilling sense of accomplishment can be realized.

VIEW #4



PLAN

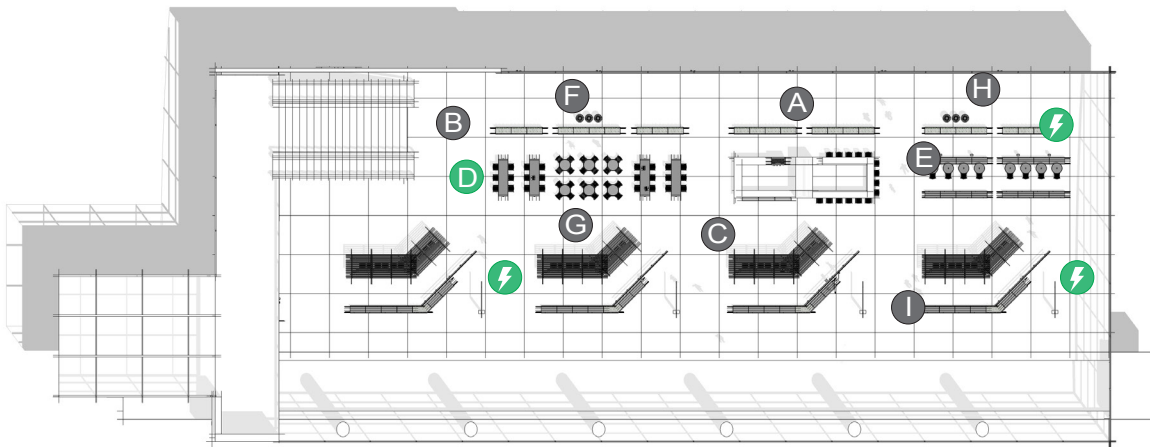


ELEVATION

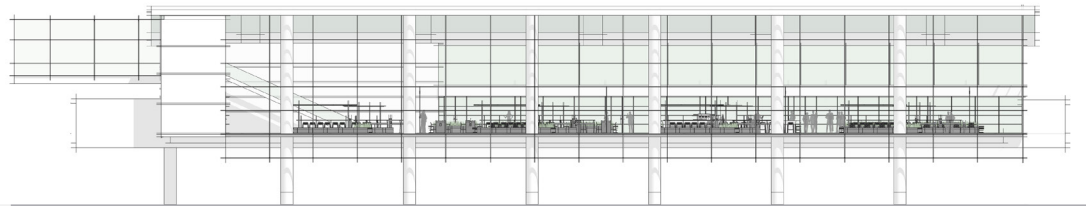
ELEMENTS, ATTRIBUTES, AND USER EXPERIENCE

- A** A range of seating and amenities including retail shops, coffee shops, and bar offer a choice of comfortable spaces for commuters to work, wait, socialize, eat, and drink.
- B** A bright, active, and open setting encourages both interaction and productivity.
- C** Overhead custom trellises bring a more humanized scale and sense of belonging into the expansive space while dampening noise. **Jessie rails** and **Chipman stools** provide productive work settings while waiting.
- D** **GO OutdoorTables** and **Chipman stools** give commuters flexible standing or perched options, substantial work surfaces, and USB and/or GFCI power to stay productive and connected.
- E** **Gus planters with seat inserts** with **Chipman chairs** and **Chipman tables** create space for small social gatherings or casual discussions with fellow commuting co-workers.
- F** **Gus planters** provide a boundary between circulation paths and seating areas while also designating a habitat for flowers to engage visual and olfactory senses.

G H I ⚡ next page



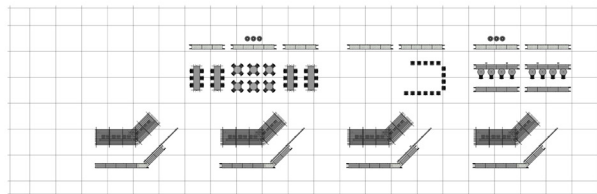
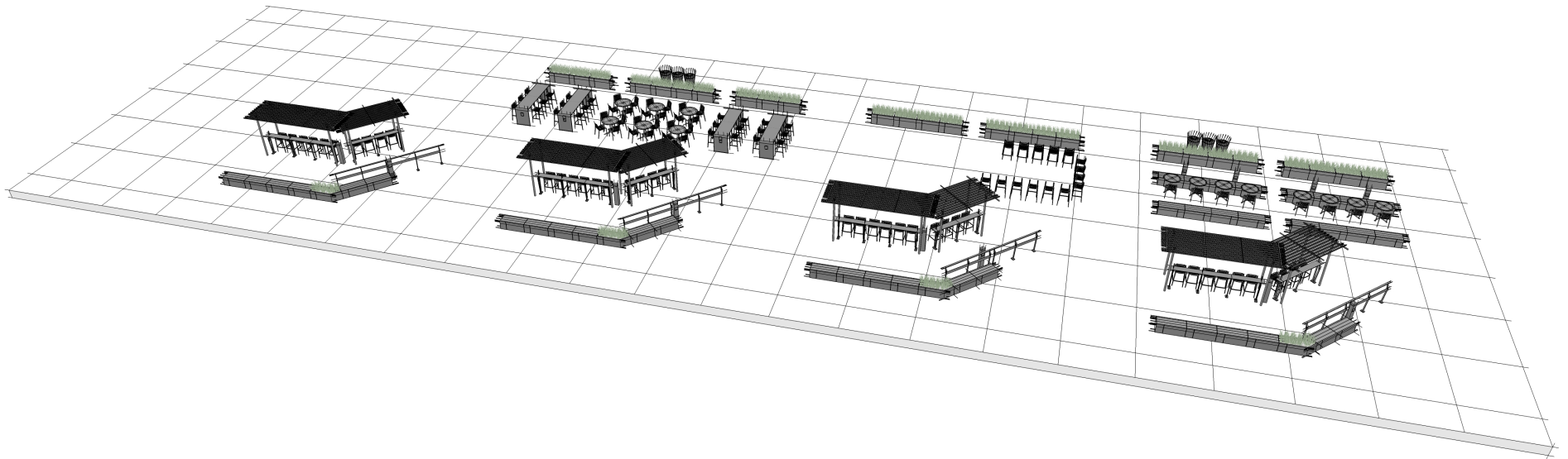
PLAN



ELEVATION

ELEMENTS, ATTRIBUTES, AND USER EXPERIENCE (CONTINUED)

- G** **Chipman tables** and **Chipman chairs** provide additional optional settings to productively work while waiting.
- H** **Central Park Conservancy litters** provide attractive options to conceal and recycle waste.
- I** **Jessie rails** and **Gus planters with seat inserts** oriented to view incoming trains offer a choice of postures.
- ⚡** **Outdoor charging stations** adjacent to seating, tables and rails provide convenient access to power and USB charging.

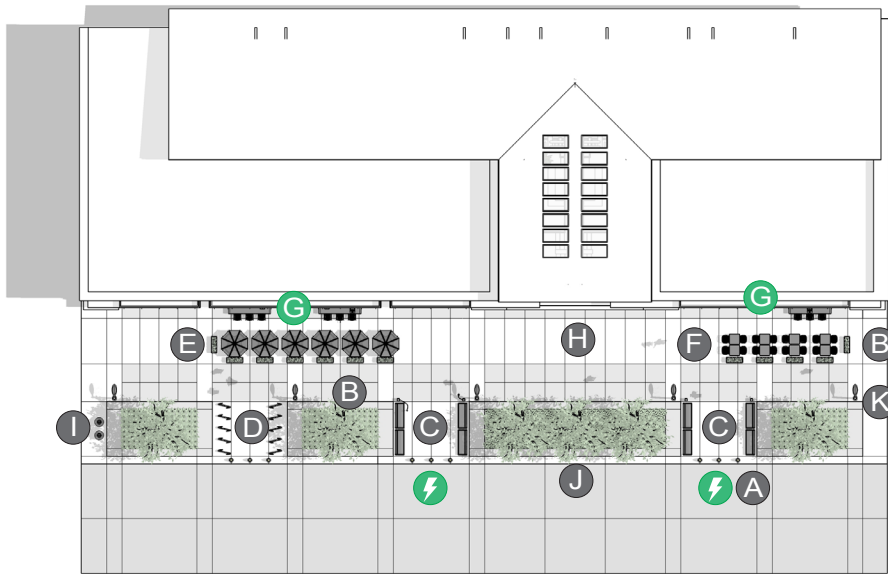


PERSPECTIVE

PLAN

ELEMENTS, ATTRIBUTES, AND USER EXPERIENCE (CONTINUED)

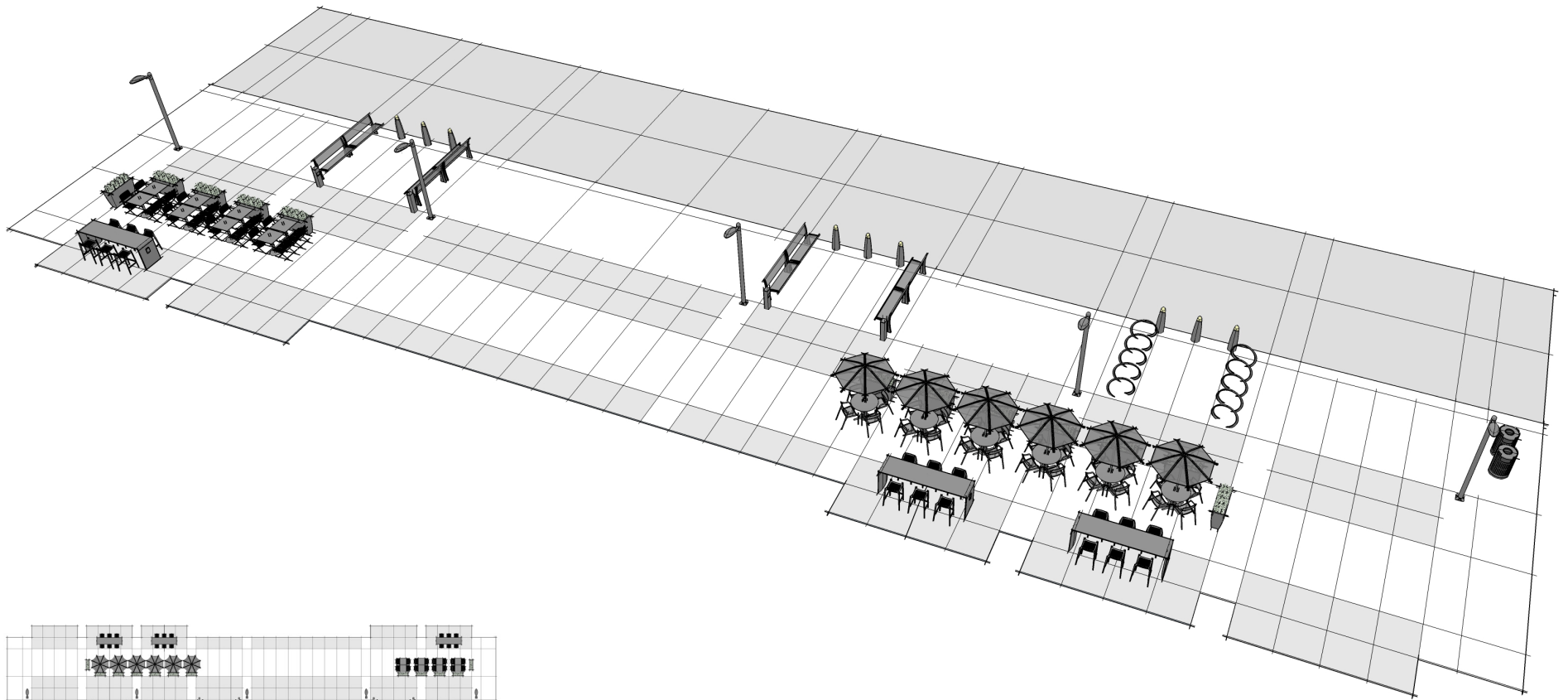
- H** Generously scaled walkways provide ample space for pedestrians and cyclists in addition to seating areas in front of cafés and restaurants.
- I** Chase Park litters provide attractive options to conceal and recycle waste.
- J** Plentiful landscaping stimulates visual senses and connects people with nature for rejuvenation.
- K** Signal pedestrian lighting is scaled to safely and effectively illuminate walkways throughout the day and night.
- A** Outdoor charging stations adjacent to benches, tables and chairs provide convenient access to power and USB charging.



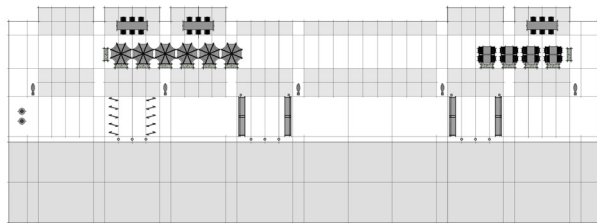
PLAN



ELEVATION



PERSPECTIVE



PLAN