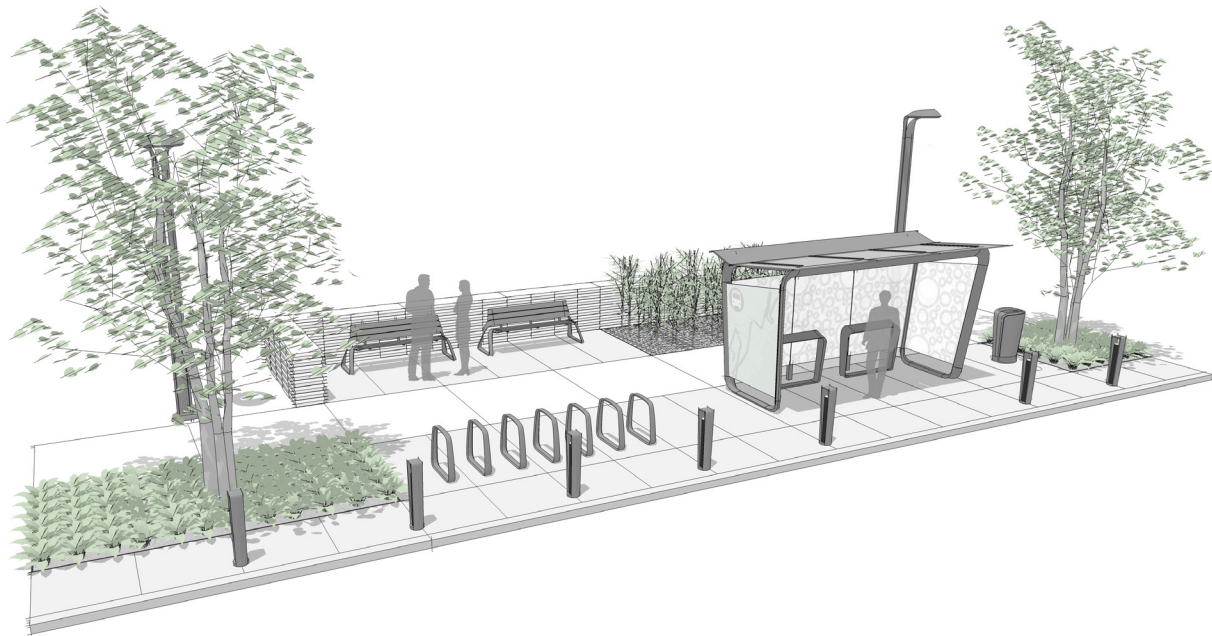


TRANSIT APPLICATION

WAITING AND QUEUING – SUBURBAN STATION 4 (W-S4)



VIEW #1



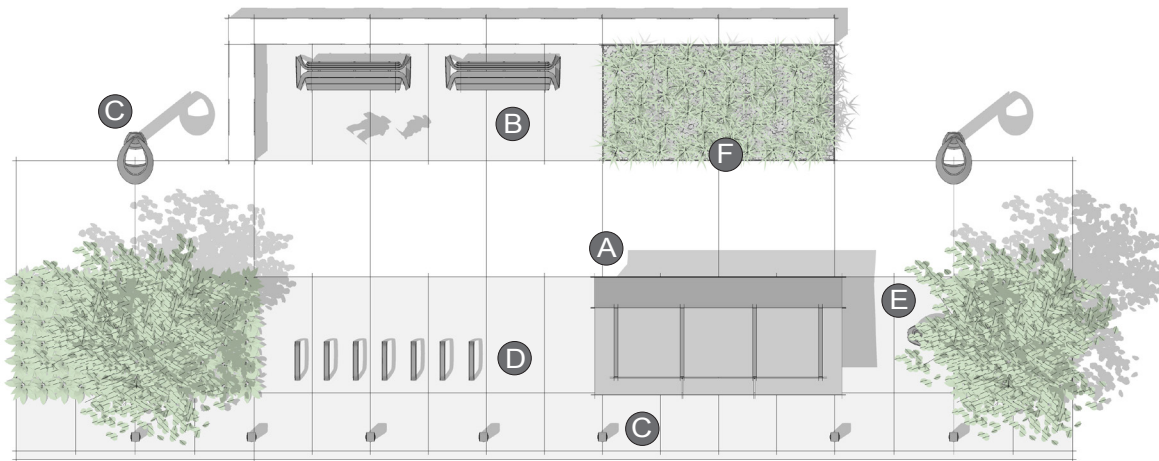
PLACE:
WAITING AND QUEUING
SUBURBAN STATION

A waiting and queuing area within a suburban station is a small open air bus or rail stop.

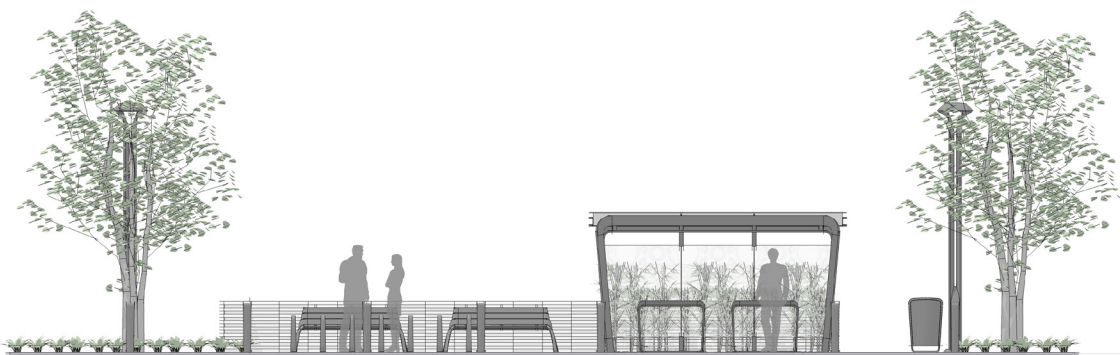
PRIMARY INSIGHT:
ESTABLISH A SENSE OF SECURITY

An enhanced travel experience can be created by establishing safe environments that reinforce basic personal safety for people and their belongings.

VIEW #2



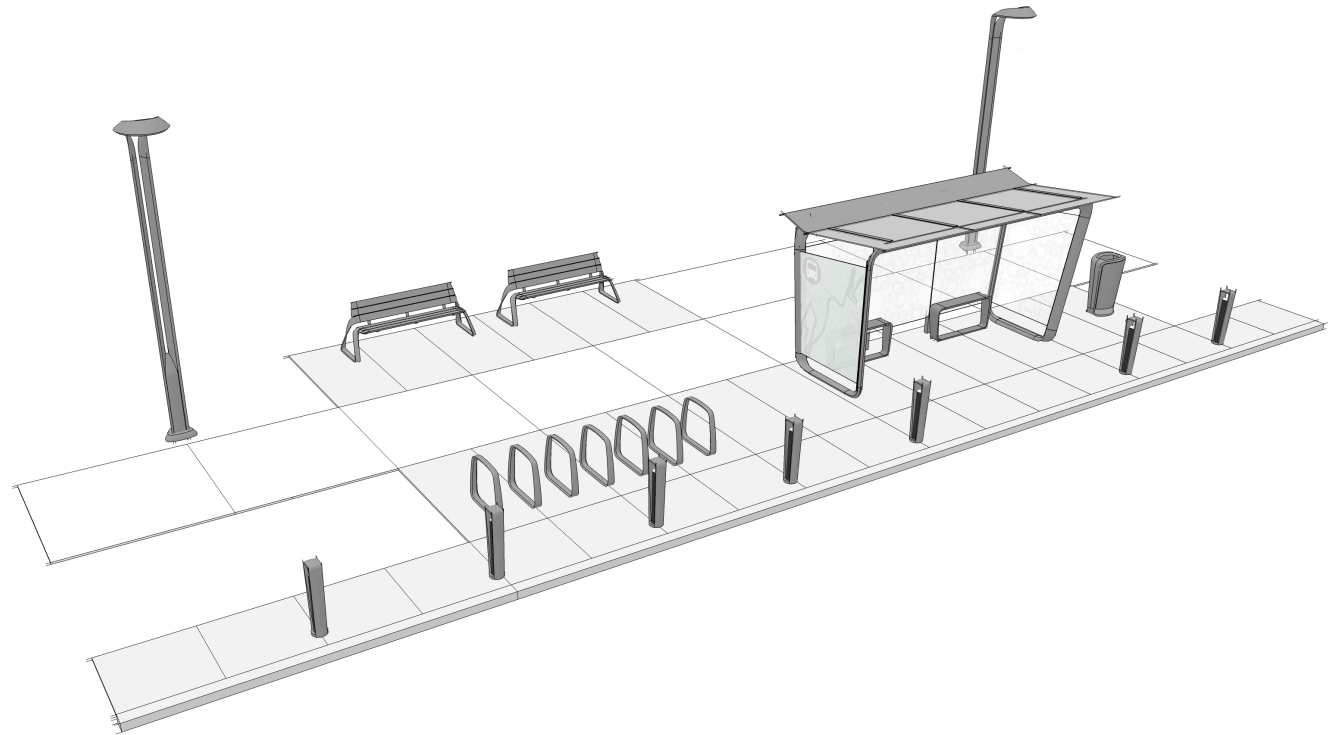
PLAN



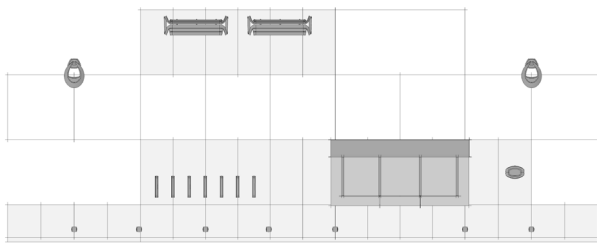
ELEVATION

ELEMENTS, ATTRIBUTES, AND USER EXPERIENCE

- A** **Connect shelter** with **Connect rails** provides a protected resting place for individuals awaiting imminent arrival of buses or trains. A graphic pattern on the back of the shelter glass provides safety and visual interest, while a route map on each end communicates route information.
- B** A secondary adjoining open seating area with **Rest benches** set back off the pedestrian path provides a comfortable, safe place to sit at peak transit hours for individuals with longer waits.
- C** **Stop bollards**, shelter lighting (custom element), and **Hi-Glo path lighting** illuminate paths, brighten shelter areas, and define pathway space to enhance safety and security of belongings.
- D** **Ride bicycle racks** support additional options for travel to suburban stations by providing secure bike storage.
- E** **Collect litters** provide attractive options to conceal and recycle waste.
- F** Landscaping adds interest and softens hardscaping.



PERSPECTIVE



PLAN