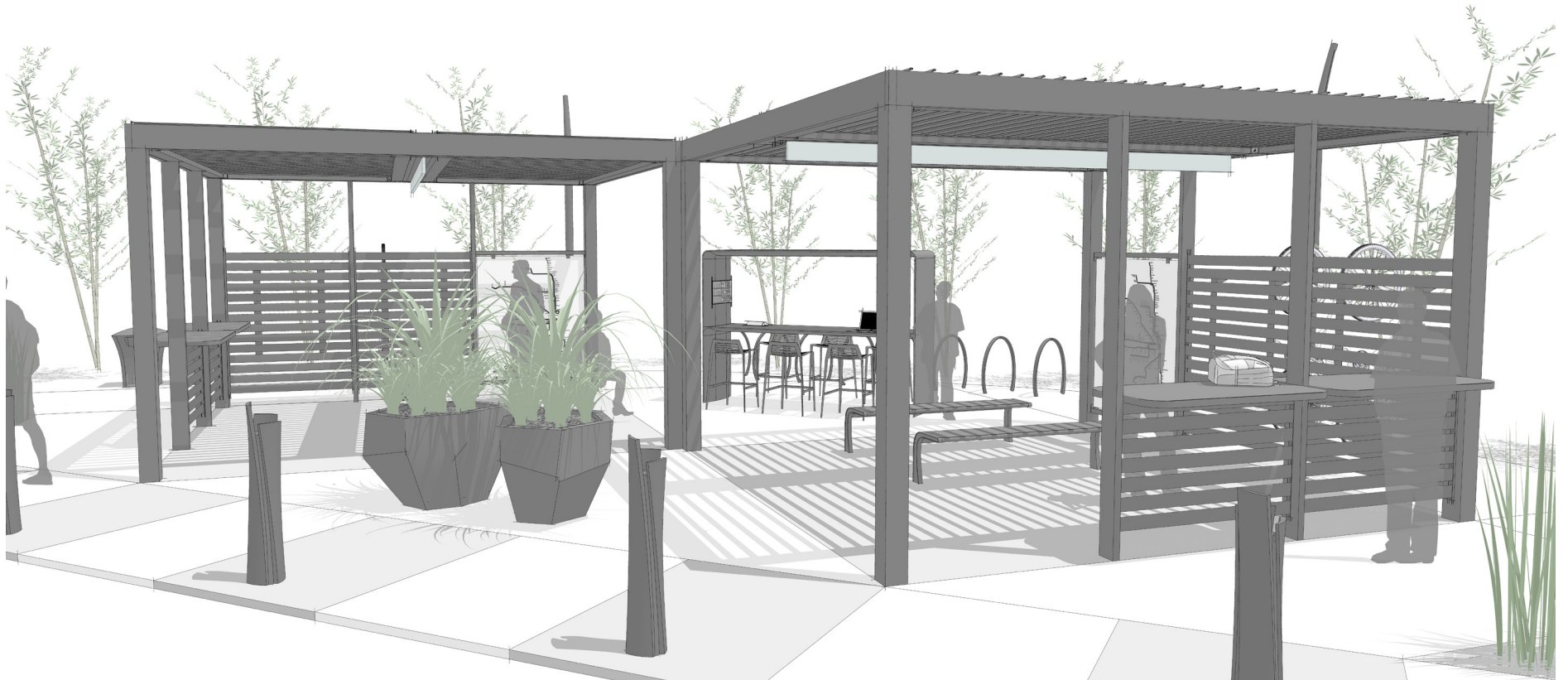


# TRAVEL APPLICATION SUBURBAN TRANSIT STATION (STS)

---



VIEW #1

---

Travel

STS

Upfit | [landscapeforms.com](https://landscapeforms.com)

landscapeforms®

# TRAVEL APPLICATION SUBURBAN TRANSIT STATION (STS)

---



VIEW #2

# TRAVEL APPLICATION SUBURBAN TRANSIT STATION (STS)

---



VIEW #3

---

Travel

STS

Upfit | [landscapeforms.com](https://landscapeforms.com)

landscapeforms®

# TRAVEL APPLICATION

## SUBURBAN TRANSIT STATION (STS)

---

### PLACE: SUBURBAN TRANSIT STATION

A small open air bus or rail stop.

### PRIMARY INSIGHT: ESTABLISH A SENSE OF SECURITY

Create environments that provide basic personal safety, security of belongings, and furnishings to enhance the journey for travelers and commuters.



VIEW #3

---

Travel

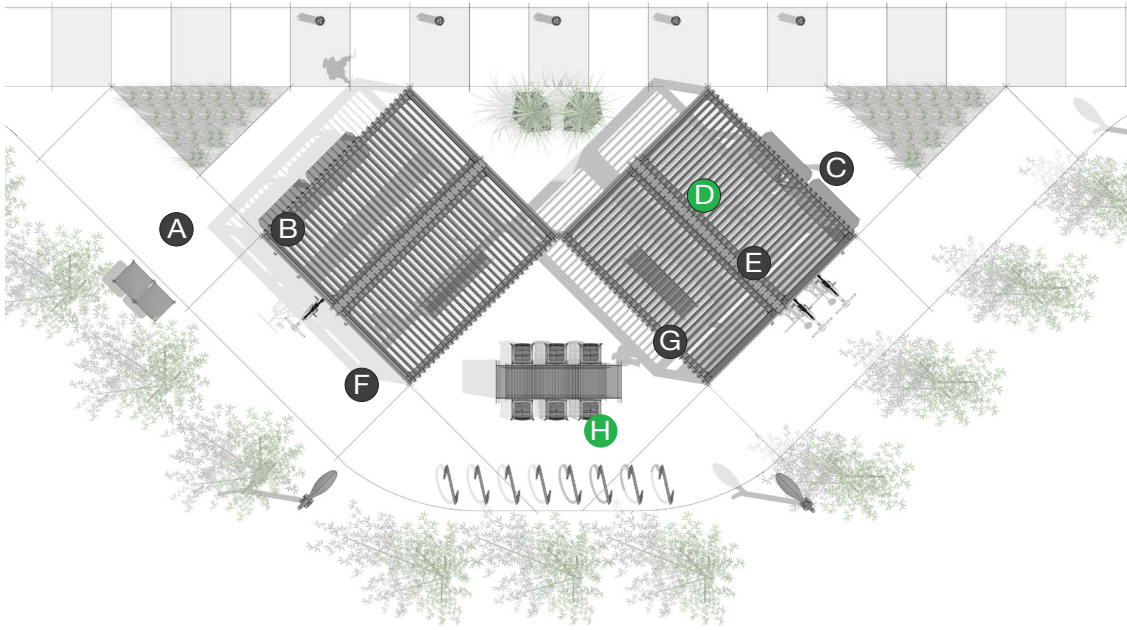
STS

Upfit | [landscapeforms.com](https://landscapeforms.com)

landscapeforms®

# TRAVEL APPLICATION

## SUBURBAN TRANSIT STATION (STS)



PLAN

### ELEMENTS, ATTRIBUTES, AND USER EXPERIENCE

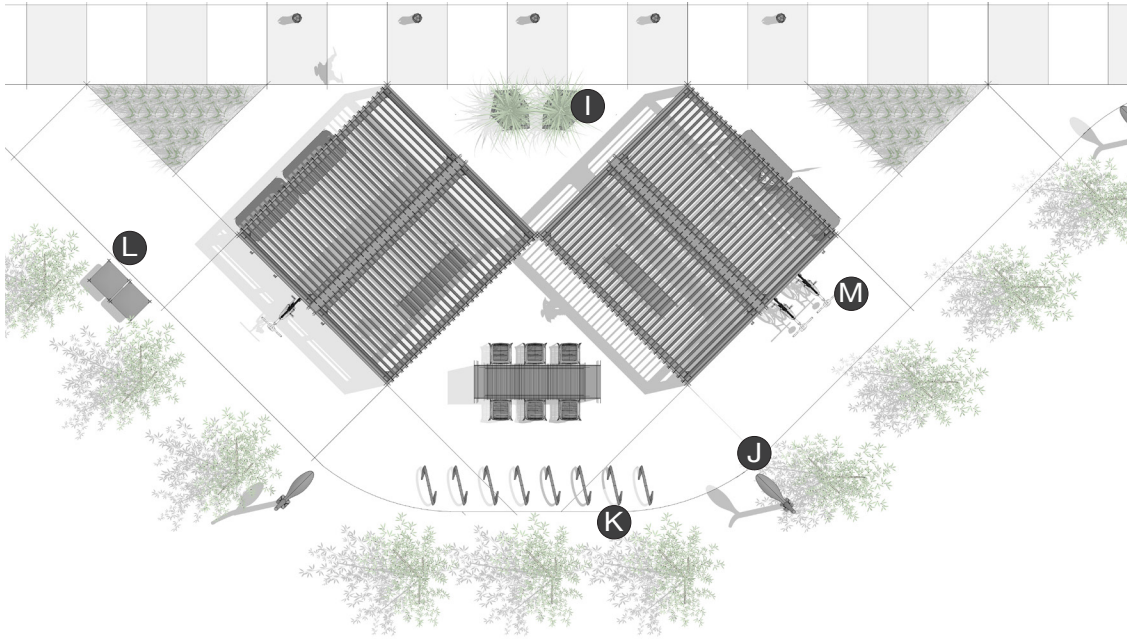
- A** Upfit structure provides transit users with weather protection, seating, surfaces, power, and wayfinding.
- B** The Upfit louvered roof provides protection from wind and sun; weather management offers control of sun and shade levels and rain protection.
- C** Upfit in-line tables offer commuters surfaces for belongings.
- D** Power access at the Upfit in-line tables is delivered through Upfit's posts and beams. Interior lighting contributes to a sense of security during evening or early morning use.
- E** Upfit slatted panels provide a degree of enclosure and protection from wind but still allow views of surroundings.
- F** Upfit glass panels with screened route maps aid wayfinding.
- G** Stay benches within the station interior offer commuters places to rest themselves and their belongings. Backless benches allow commuters to orient themselves in a preferred direction.
- H** Go OutdoorTable on the exterior of the stations provides a protected surface and power access for commuters.



ELEVATION

# TRAVEL APPLICATION

## SUBURBAN TRANSIT STATION (STS)



PLAN

### ELEMENTS, ATTRIBUTES, AND USER EXPERIENCE

- I** Kornegay Quartz planters introduce color and texture to the hardscape.
- J** Signal area lights and Guide bollard lighting enhance safety and wayfinding.
- K** Loop bike racks offer secure storage of commuters' bikes and keep the station organized.
- L** Pitch receptacles placed in convenient locations help to keep the area free of litter.
- M** Upfit bike racks attached to Upfit panels offer secure storage of bicycles.



ELEVATION