

TRANSIT APPLICATION

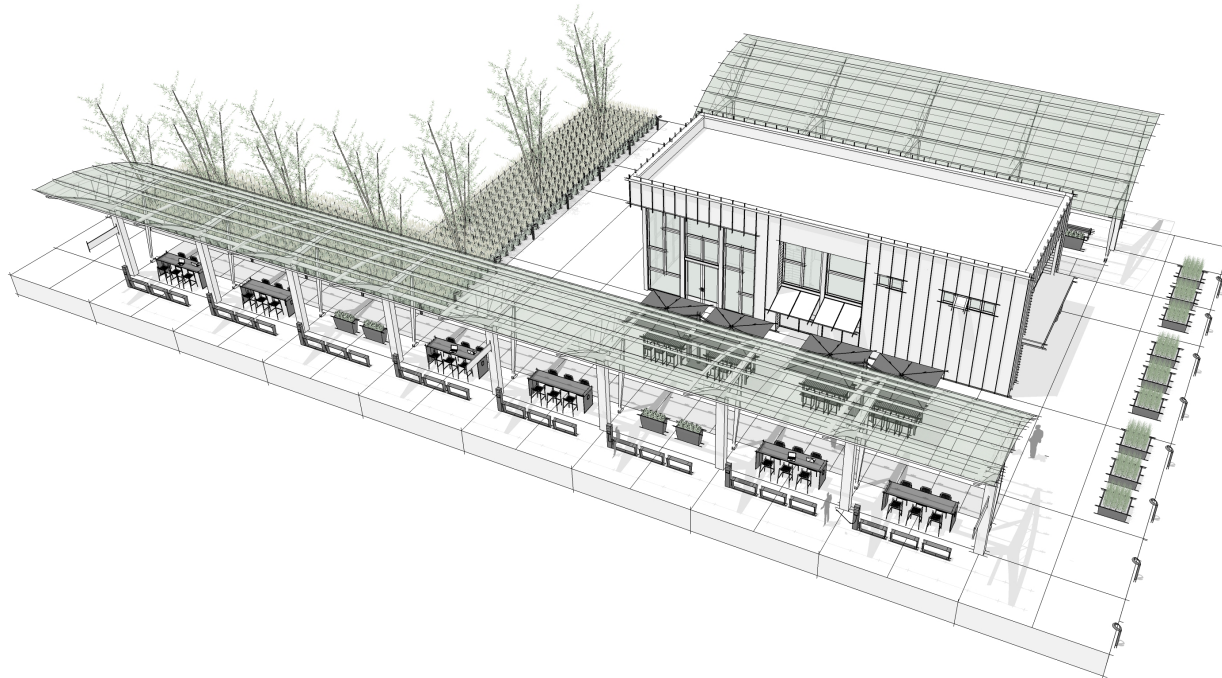
WAITING AND QUEUING – REGIONAL STATION 2 (W-R2)



VIEW #1



VIEW #2



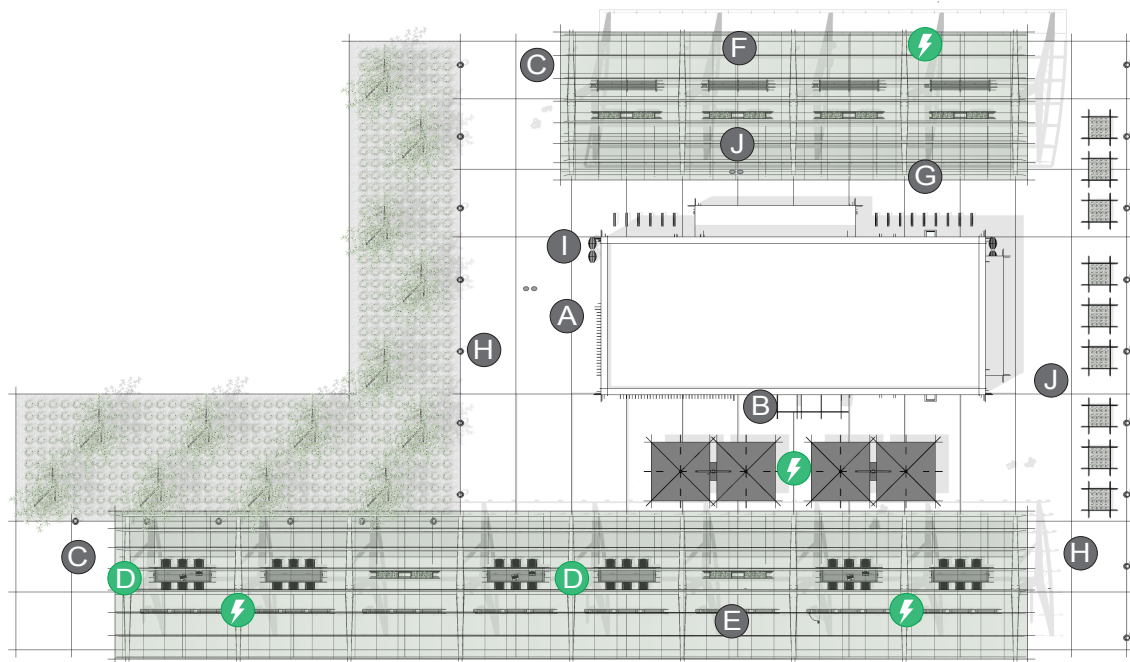
PLACE:
WAITING AND QUEUING
REGIONAL STATION

A waiting and queuing area within a regional station is an open, multi-modal depot developed on a regional scale paired with a facility that serves bus and rail lines.

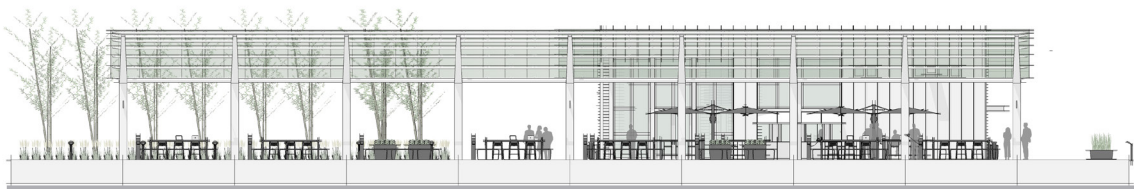
PRIMARY INSIGHT:
SPARK SOCIAL INTERACTIONS

By incorporating design interventions that spark social interactions, a more memorable and humanized transit process can be cultivated.

VIEW #3



PLAN

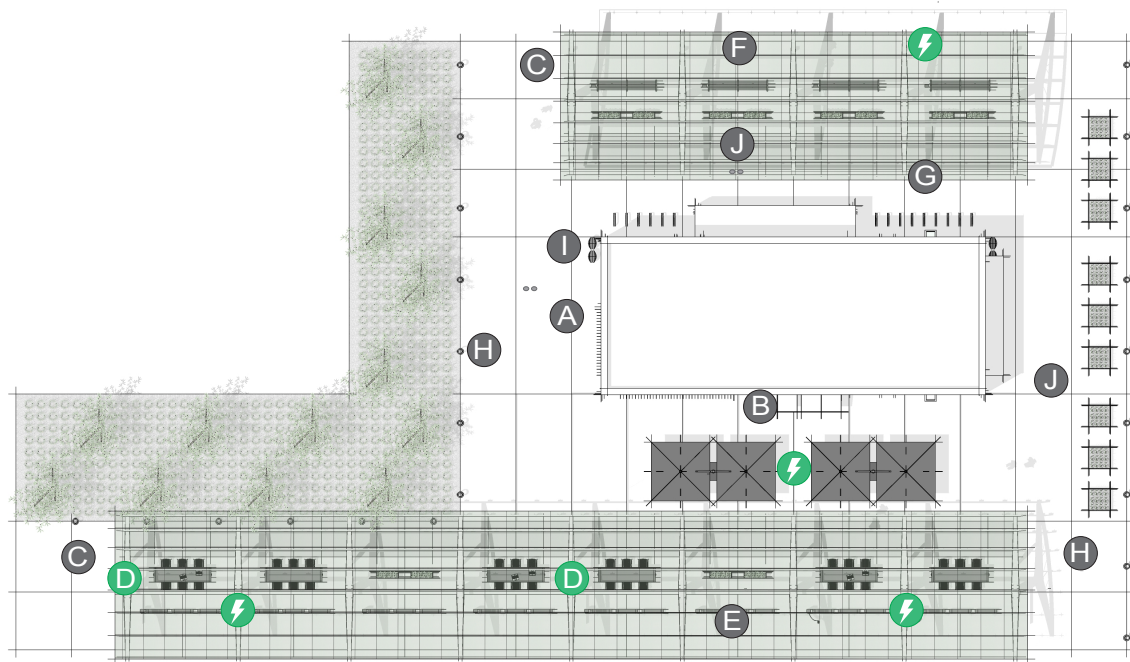


ELEVATION

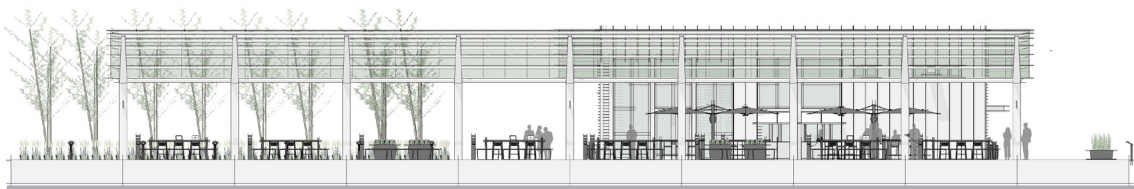
ELEMENTS, ATTRIBUTES, AND USER EXPERIENCE

- A** A service hub is integrated with the station to include a ticket counter, coffee shop, rest rooms, and comfortable waiting areas which naturally spark social interactions.
- B** Outdoor coffee and juice bar with **Morrison tables**, **Morrison stools**, and **TUUCI umbrellas** establishes a pleasant spot to socialize while waiting for buses or trains.
- C** Outdoor covered waiting area (custom element) creates a layer of enclosure and protection from the elements while allowing sunlight to illuminate the space.
- D** **GO OutdoorTables** and **Chipman stools** offer comfortable spaces and postures for relaxed conversation and connection to power.
- E** **Connect sitting rails** support conversational perching postures while awaiting buses or trains.
- F** **FGP benches** provide short-term seating for commuters in bus lines.
- G** **Ride bicycle racks** support additional options for travel to regional stations by providing secure bike storage.

H I J ⚡ next page



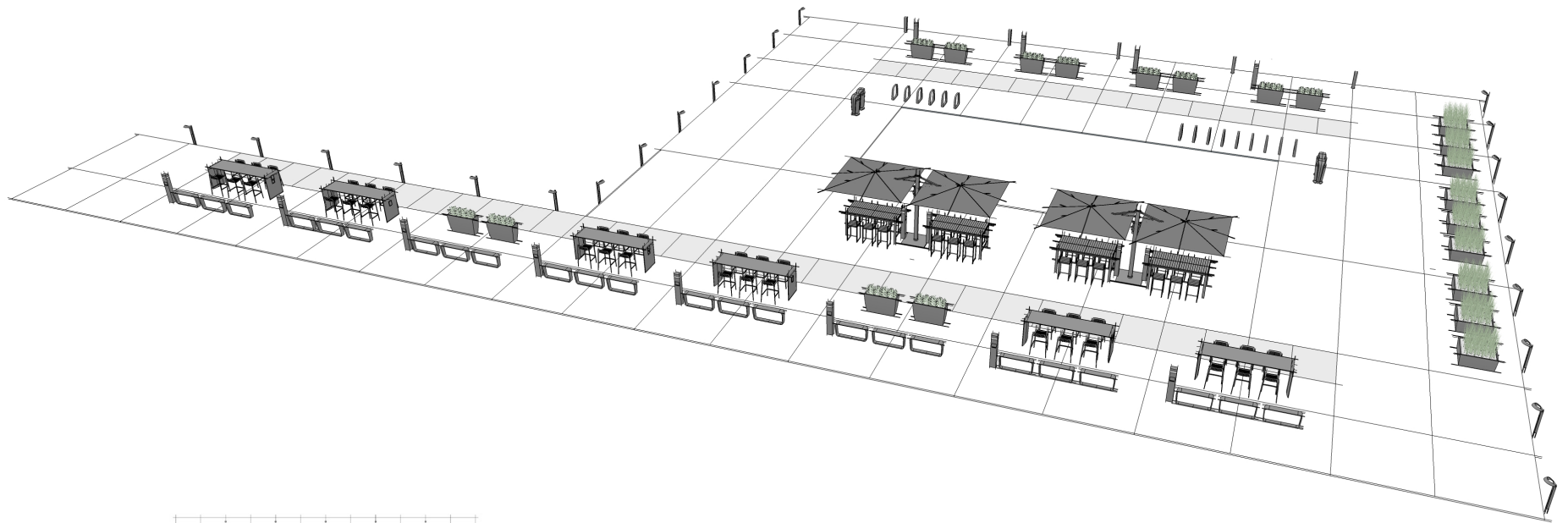
PLAN



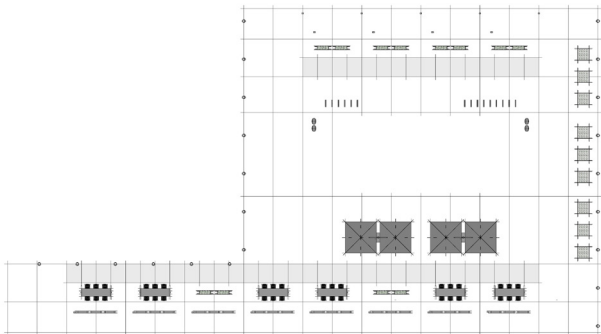
ELEVATION

ELEMENTS, ATTRIBUTES, AND USER EXPERIENCE (CONTINUED)

- H** **Lo-Glo path lighting** defines the boundaries of the station area with a warm ambient glow.
- I** **Collect litters** provide attractive options to conceal and recycle waste.
- J** **Sorella planters** offer a habitat for colorful flowers, define boundaries between walk path and waiting areas, and engage visual and olfactory senses.
- ⚡** **Outdoor charging stations** adjacent to tables, benches and rails provide convenient access to power and USB charging.



PERSPECTIVE



PLAN