

TRAVEL APPLICATION

REGIONAL TRANSIT STATION (RTS)



VIEW #1

Travel

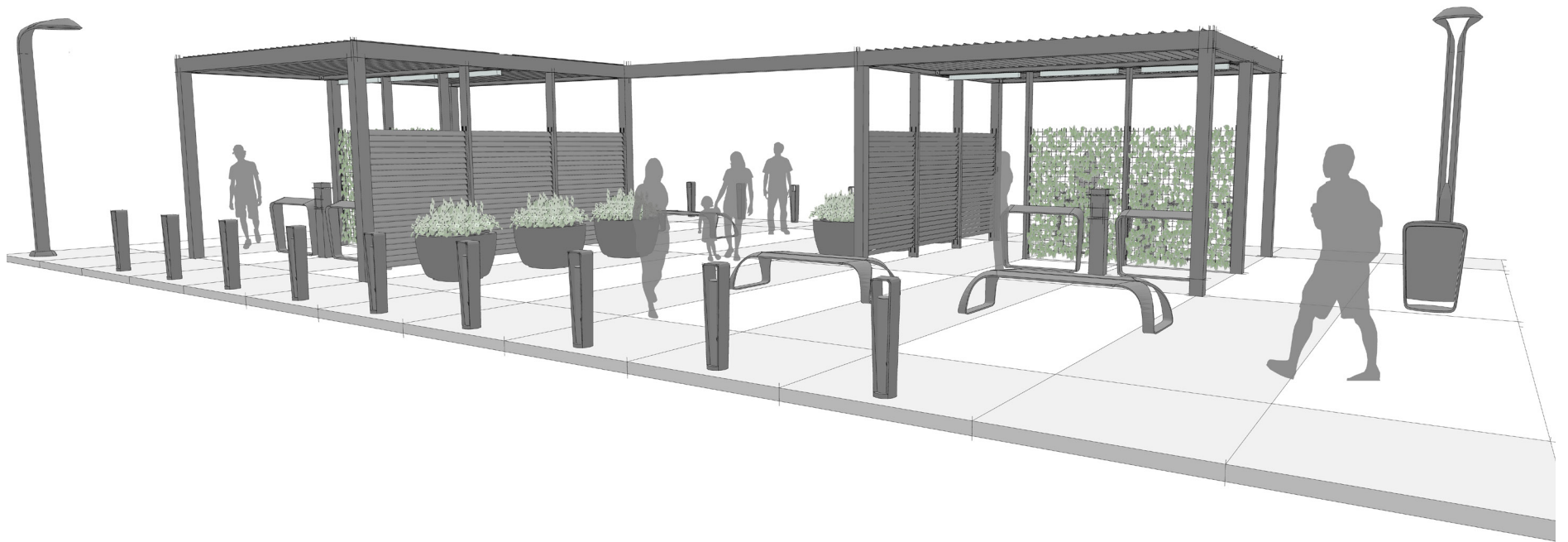
RTS

Upfit | landscapeforms.com

landscapeforms®

TRAVEL APPLICATION

REGIONAL TRANSIT STATION (RTS)



VIEW #2

Travel

RTS

Upfit | landscapeforms.com

landscapeforms®

TRAVEL APPLICATION

REGIONAL TRANSIT STATION (RTS)



VIEW #3

Travel

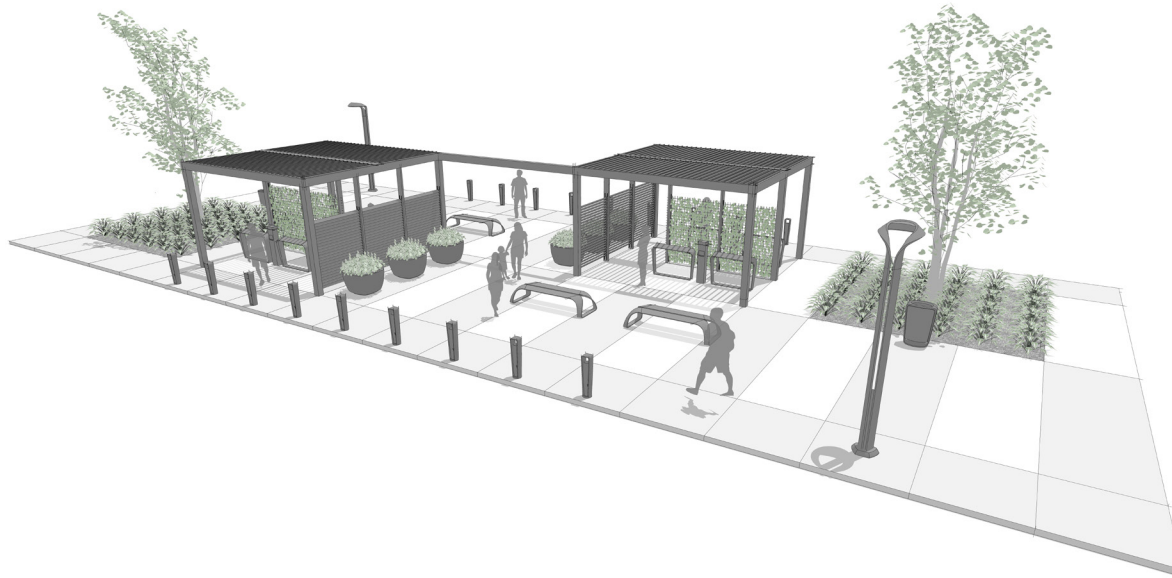
RTS

Upfit | landscapeforms.com

landscapeforms®

TRAVEL APPLICATION

REGIONAL TRANSIT STATION (RTS)



PLACE: REGIONAL TRANSIT STATION

An open, multi-modal station developed on a regional scale and paired with a facility that serves rail and bus lines.

PRIMARY INSIGHT: SPARK SOCIAL INTERACTIONS

Include design elements that spark social interactions and cultivate memorable, human-centered experiences.

VIEW #3

Travel

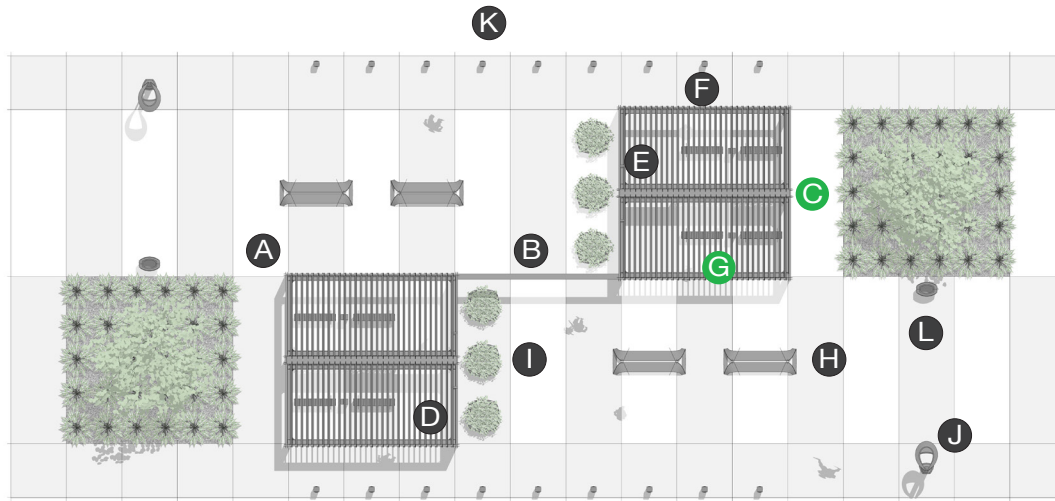
RTS

Upfit | landscapeforms.com

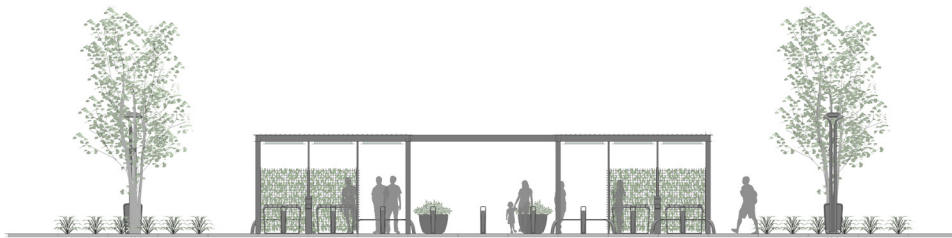
landscapeforms®

TRAVEL APPLICATION

REGIONAL TRANSIT STATION (RTS)



PLAN



ELEVATION

ELEMENTS, ATTRIBUTES, AND USER EXPERIENCE

- A** Upfit station design defines cueing and waiting zones with elements such as seating, work surfaces, and charging stations.
- B** Mirrored stations provide visibility and access to rail and bus lines at two access points.
- C** Power is delivered through Upfit's posts and beams. Upfit interior lighting contributes to a sense of security during evening or early morning use.
- D** The Upfit louvered roofs provide protection from wind and sun; weather management offers control of sun and shade levels and rain protection.
- E** Upfit louvered panels offer protection from the sun and wind.
- F** Upfit green panels add color and texture to the hardscape and linear nature of transit stations.
- G** Connect sitting rails provide a perch, and charging stations with LED area lights offer convenient access to power and USB charging in the waiting zones.
- H** Rest benches offer short duration seating for commuters awaiting transit.
- I** Kornegay Larkspur planters line the center walkway and add color and natural elements to the station.
- J** Two Hi-Glo area lights illuminate the station and contribute to a sense of safety and comfort.
- K** Stop bollards signal station boundaries for commuters awaiting transit.
- L** Collect receptacles conveniently located help to keep the area free of litter.