

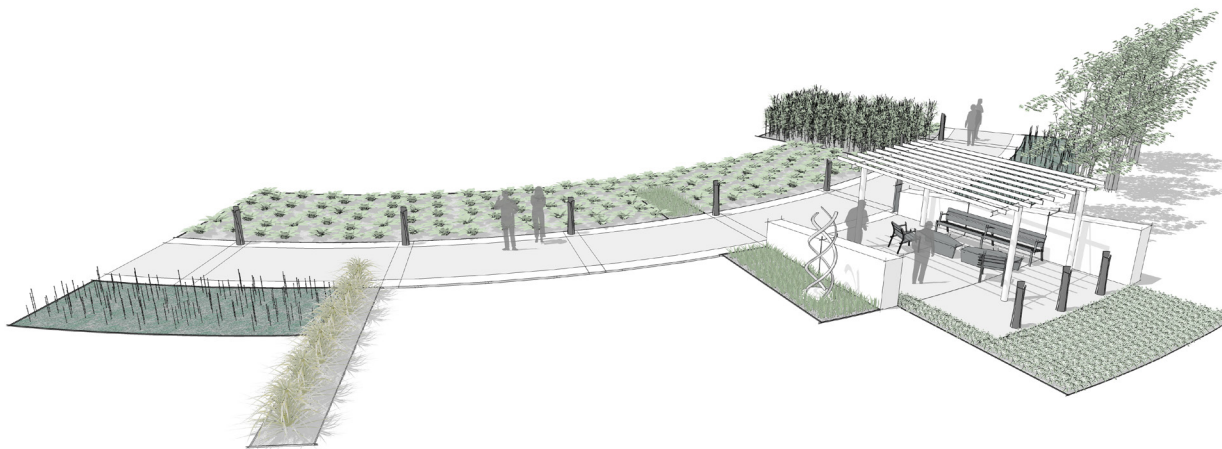
# HEALTHCARE APPLICATION

## ASSISTED LIVING – WALKING GARDEN (A-WG)

---



VIEW #1



**LOCATION:**  
ASSISTED LIVING

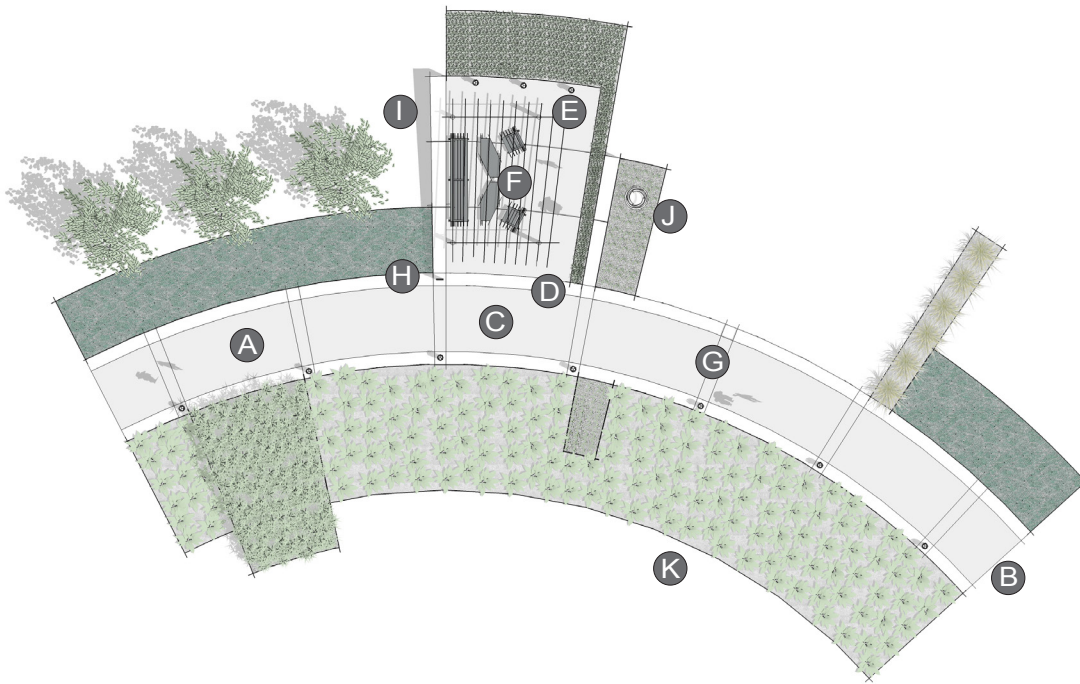
**PLACE:**  
WALKING GARDEN

Walking Garden is an extended garden along a path to encourage exercise.

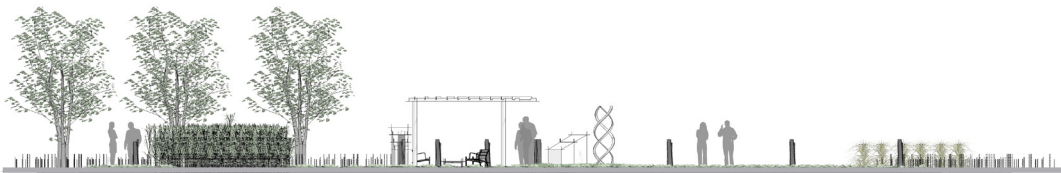
**PRIMARY INSIGHT:**  
ENHANCE BELONGING

Settings that reinforce a sense of belonging and orientation within a space reduce stress and assist in navigating unfamiliar surroundings.

VIEW #2



PLAN

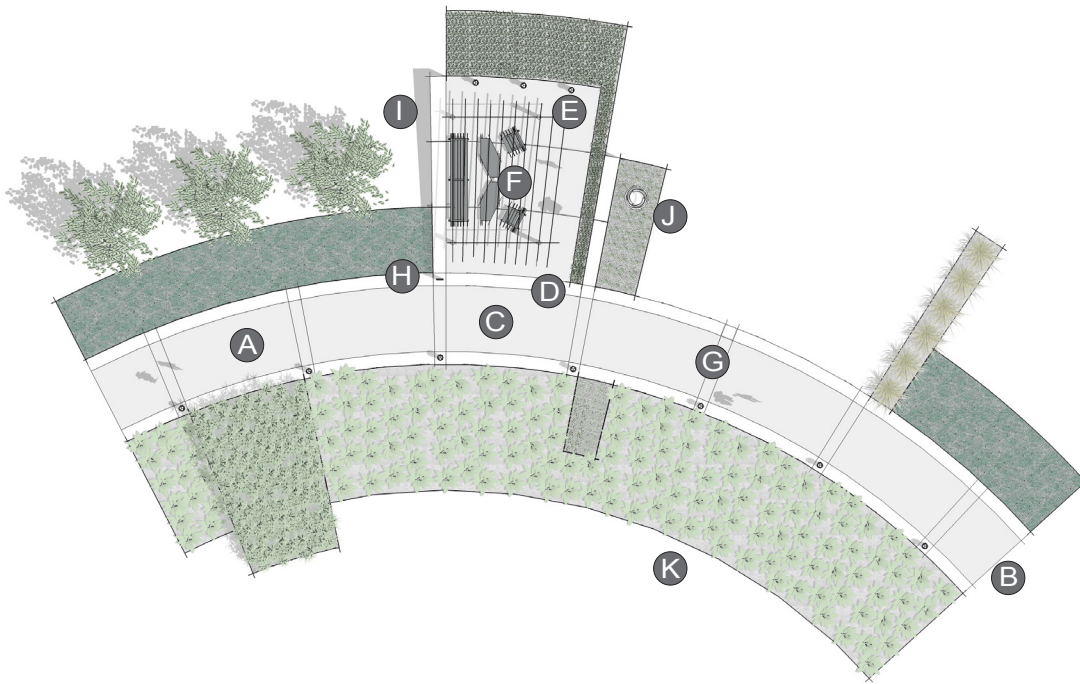


ELEVATION

## ELEMENTS, ATTRIBUTES, AND USER EXPERIENCE

- A** A level, smooth, and gently curving path with no right angles or cessation points contributes to a sense of orientation.
- B** Wide walking paths are suitable for multiple wheelchairs.
- C** A seating alcove is positioned in a semi-secluded manner to provide a place to rest and socialize.
- D** **Neoliviano benches** provide ample seating for small groups and configurations create inclusive seating arrangements for patients in wheelchairs.
- E** An overhead trellis (custom element) in the seating alcove provides shade and creates an increased sense of belonging.
- F** **STRATA tables** provide generous surface area for personal items.
- G** **Guide path lighting** illuminates the path and edges of the seating alcove to provide a sense of warmth.
- H** **Reeder illuminated sign** provides campus wide wayfinding and identification of available settings to ease navigation.

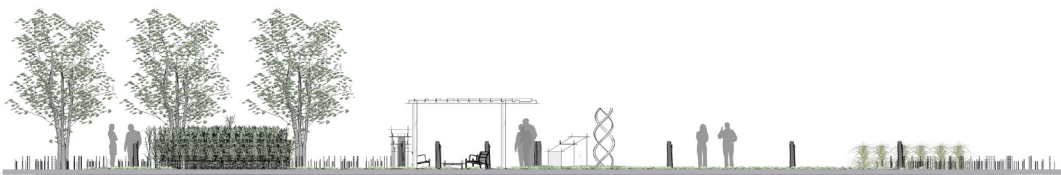
**I J K** next page



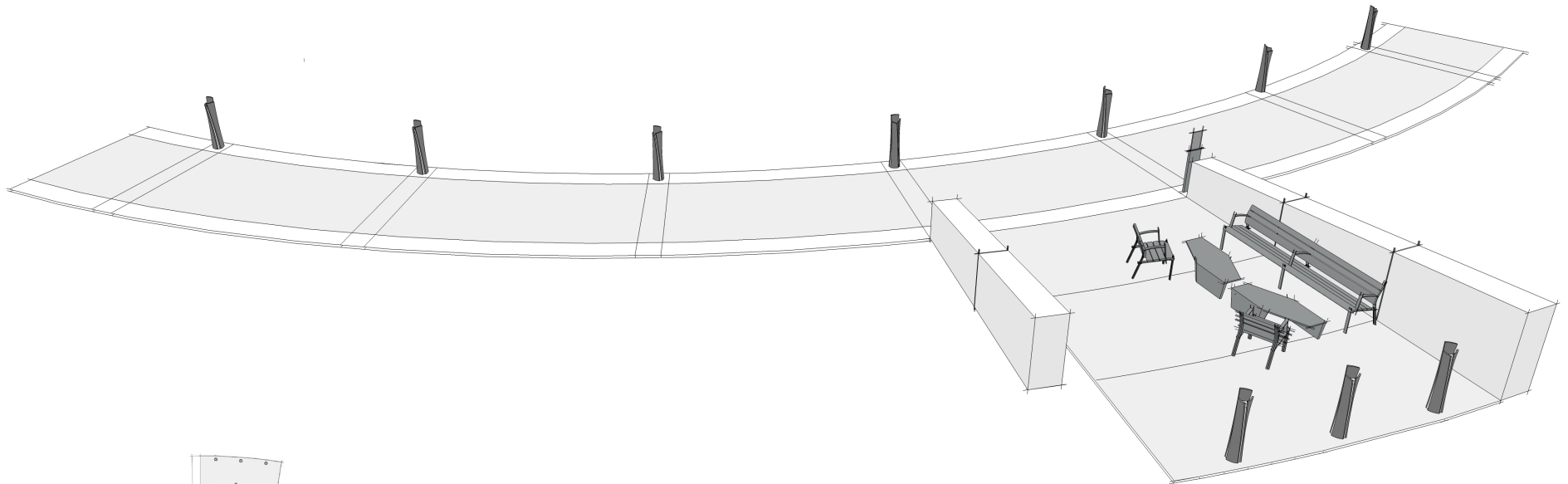
## ELEMENTS, ATTRIBUTES, AND USER EXPERIENCE (CONTINUED)

- I A granite wall (custom element) offers a windbreak for increased comfort.
- J Sculptures along the path create additional visual interest and motivate activity.
- K Plant materials provide a sense of continuity while set planting areas create distinctive accents to the journey.

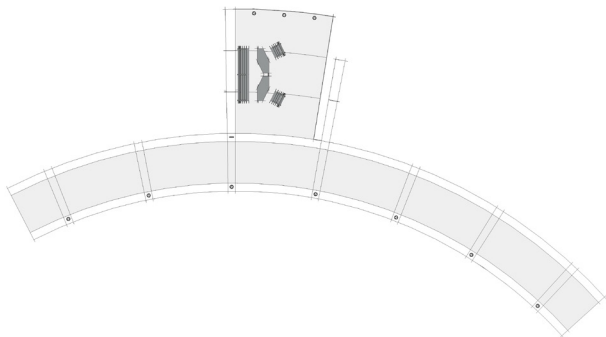
PLAN



ELEVATION



PERSPECTIVE



PLAN