

HEALTHCARE APPLICATION

ASSISTED LIVING – VIEWING GARDEN (A-VG)



VIEW #1



LOCATION:
ASSISTED LIVING

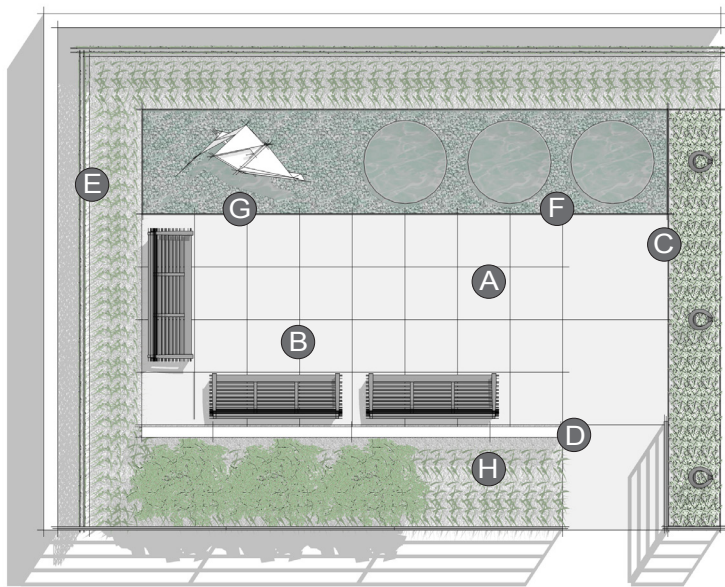
PLACE:
VIEWING GARDEN

Viewing Garden is a small, enclosed garden that provides controlled access and comforting views from sheltered seating areas.

PRIMARY INSIGHT:
NURTURE HEALING

Connecting patients, staff, and visitors with natural light, fresh air, and nature helps to nurture healing, provide moments of respite, and establish a healthy mind-body balance.

VIEW #2



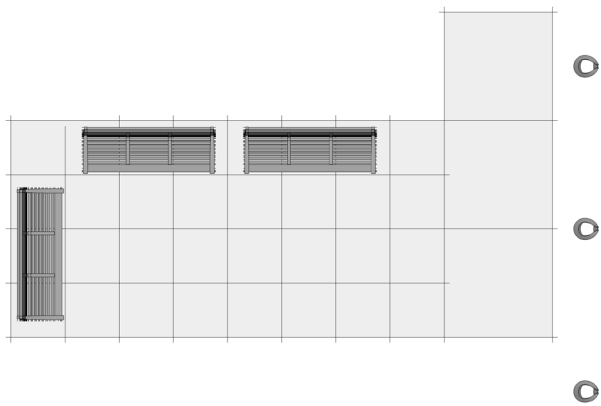
PLAN



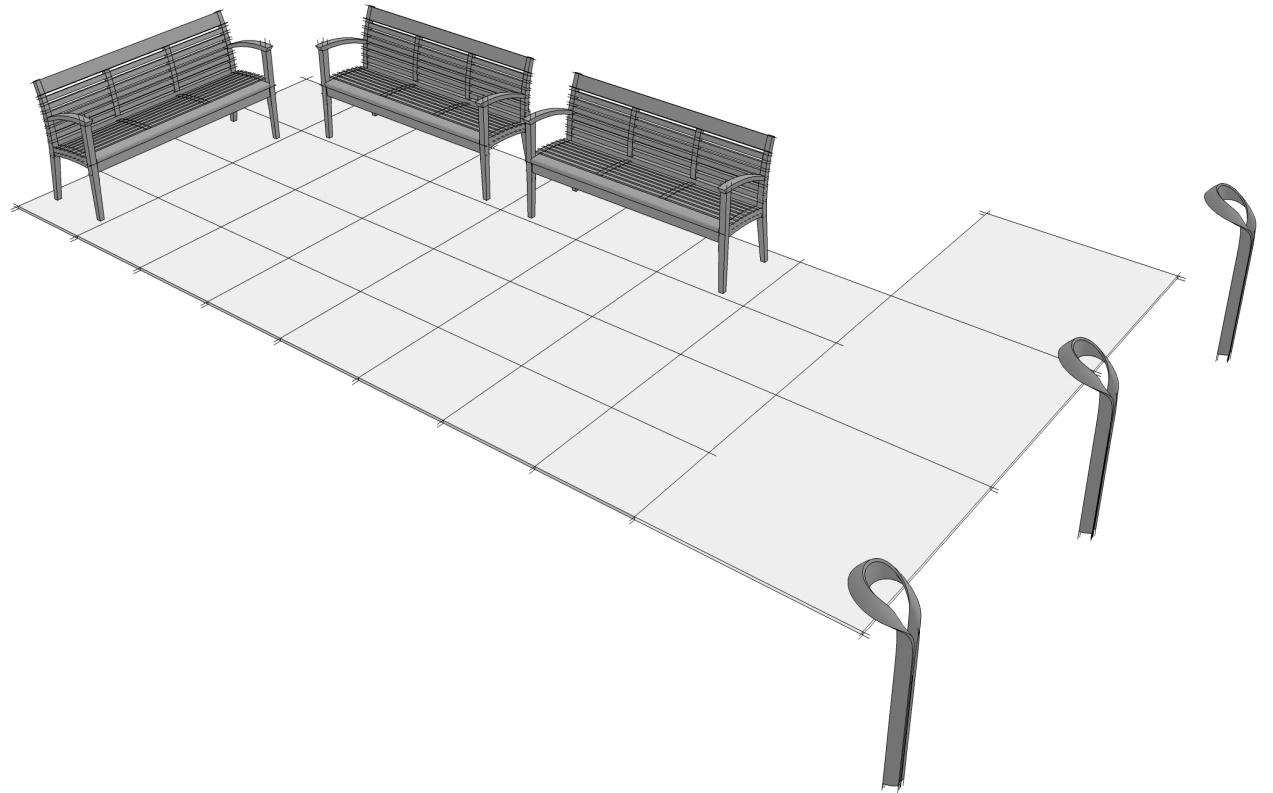
ELEVATION

ELEMENTS, ATTRIBUTES, AND USER EXPERIENCE

- A** The generous size of the garden accommodates multiple wheelchairs.
- B** **Wellspring benches** are configured for active socializing and provide extended arm heights to assist patients and elderly in rising from a seated position.
- C** **Lo-Glo path lighting** defines the edge of the garden with a warm ambient glow.
- D** Horizontal wood slat dividers (custom element) unify the space while screening people from view.
- E** A monolithic wall of living plants (custom element) in front of the building alcove walls soften the perimeter of the setting.
- F** A water feature engages auditory and visual senses to add to the serenity of the garden.
- G** A sculpture provides a focal point and engaging conversation piece within the garden.
- H** Plant materials and hardscaping offer a pleasant view.



PLAN



PERSPECTIVE