

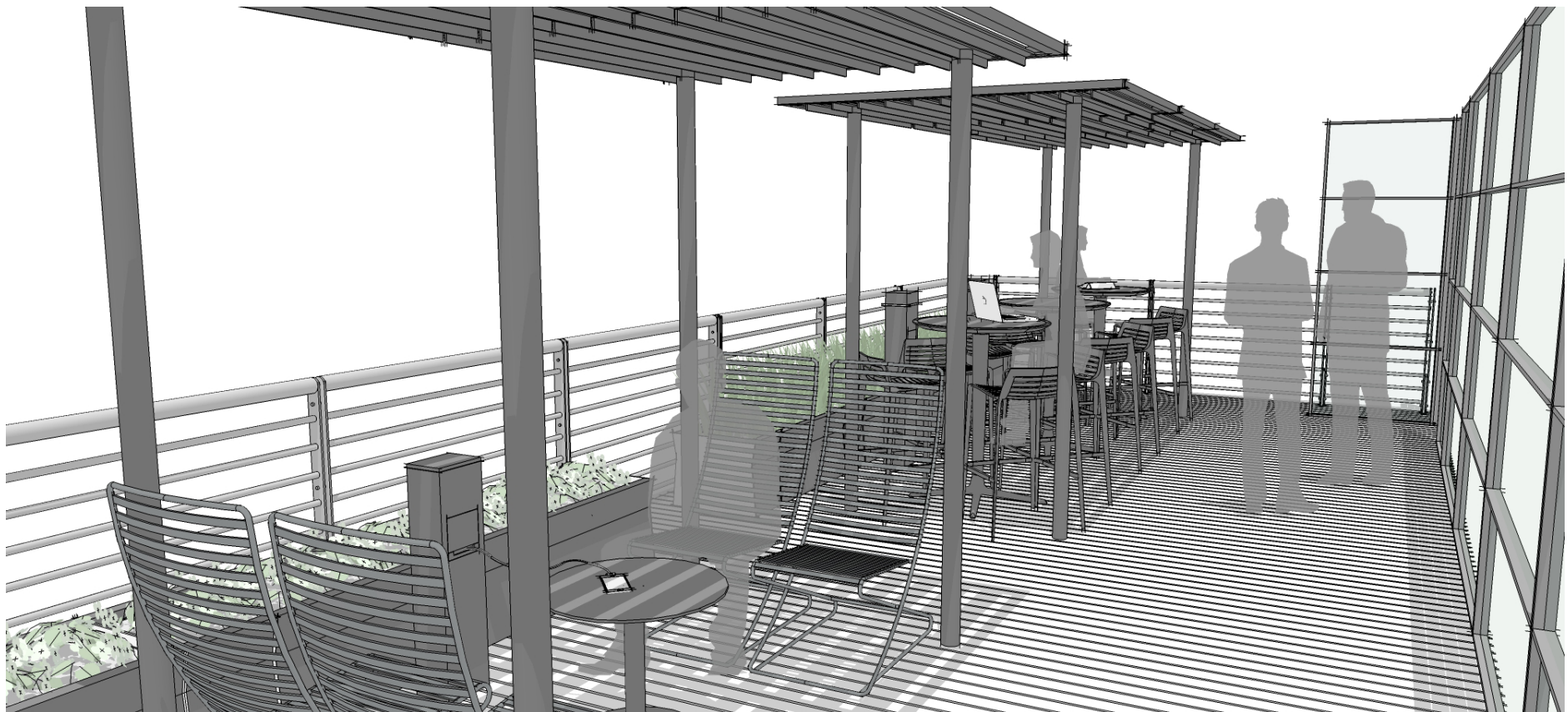
## HEALTHCARE APPLICATION

### GENERAL HEALTHCARE – ROOF TERRACE (G-RT)

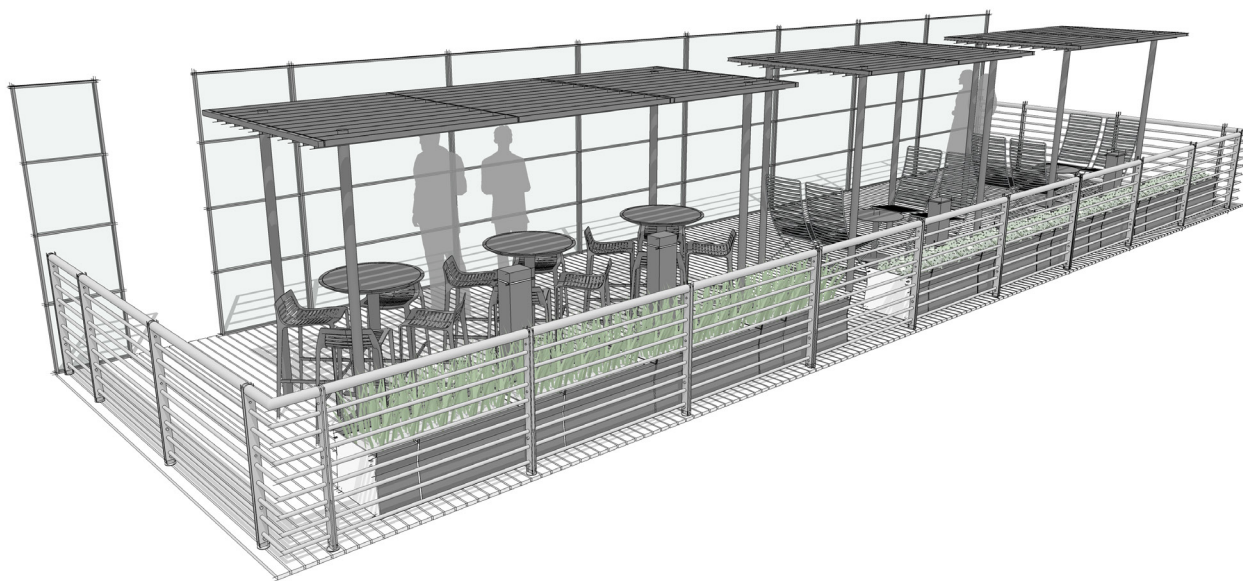
---



VIEW #1



VIEW #2



**LOCATION:**  
GENERAL HEALTHCARE CAMPUS

**PLACE:**  
ROOF TERRACE

Roof Terrace is a terrace occupying a portion of the roof area designed to provide views, access to light, and fresh air.

**PRIMARY INSIGHT:**  
FACILITATE COMMUNICATION

Settings that encourage informal social exchanges improve communication between patients and providers, which can reduce stress and foster the healing process.

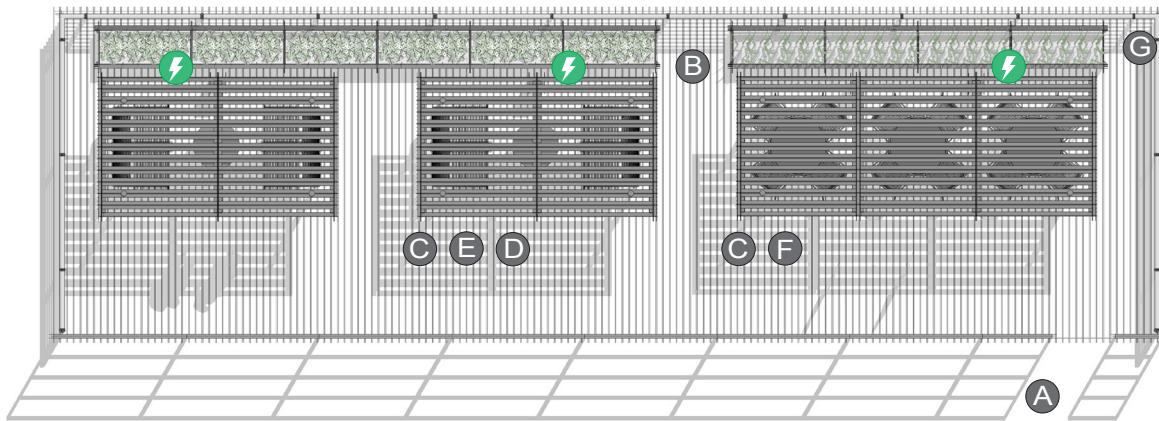
VIEW #3

HEALTHCARE

G-RT

landscapeforms.com

landscapeforms®



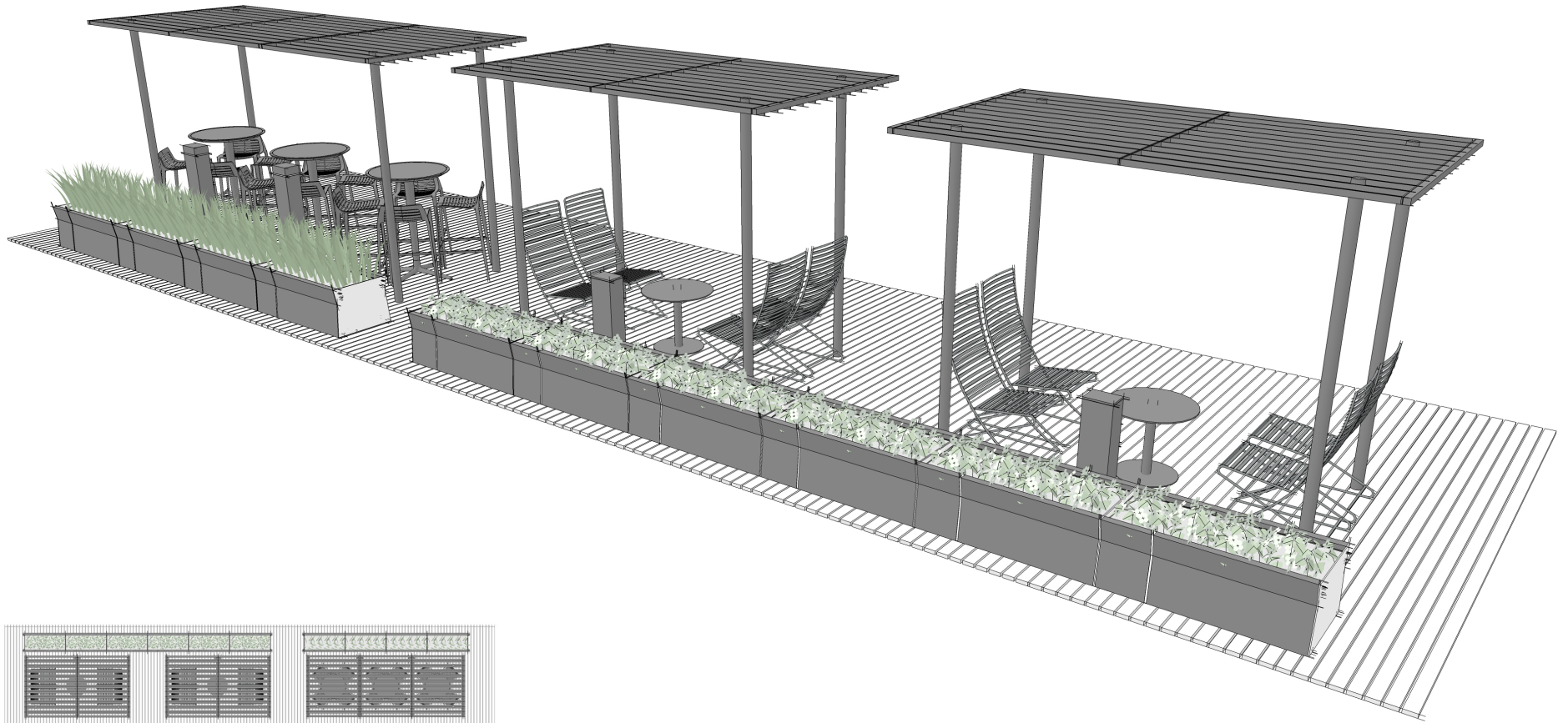
PLAN



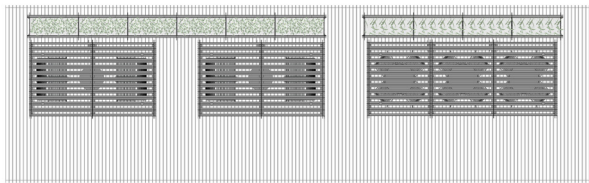
ELEVATION

## ELEMENTS, ATTRIBUTES, AND USER EXPERIENCE

- A** Terrace should be positioned to minimize views from building inhabitants above.
- B** Multiple settings offer a choice of lounge or stool based postures for multiple types of social interaction.
- C** Seating groupings are located near railings to allow for open views.
- D** Custom trellis creates a sense of place while also adding a degree of privacy and shade.
- E** **Parc Centre lounge seating** and **Parc Centre tables** facilitate casual group conversations.
- F** **Chipman tables** and **Chipman stools** are ideal for brief conversations or staff breaks.
- G** **Gus planters** ground seating areas and soften the deck with colorful flowers and other green plantings.
- ⚡** **Outdoor charging stations** adjacent to tables, chairs and stools provide convenient access to power and USB charging.



PERSPECTIVE



PLAN