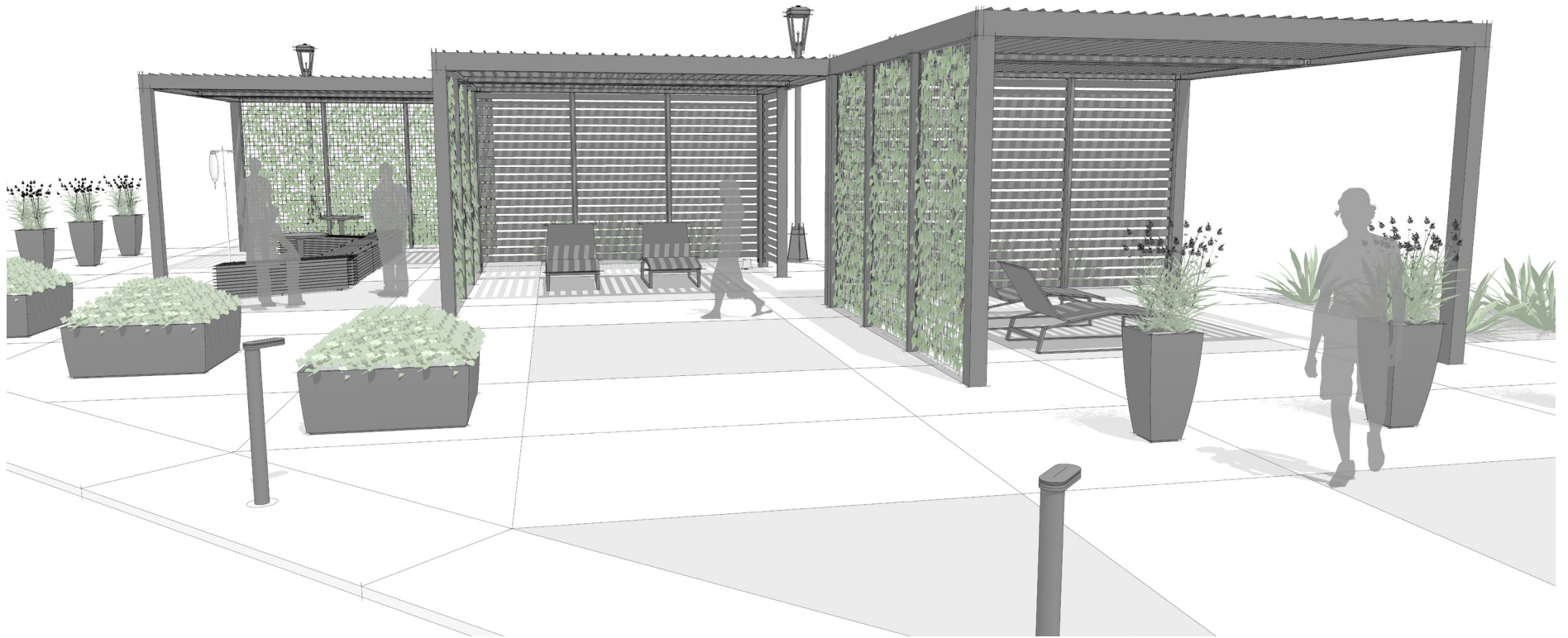


CARE APPLICATION RETREAT (R)



VIEW #1

Care

R

Upfit | landscapeforms.com

landscapeforms®

CARE APPLICATION RETREAT (R)



VIEW #2

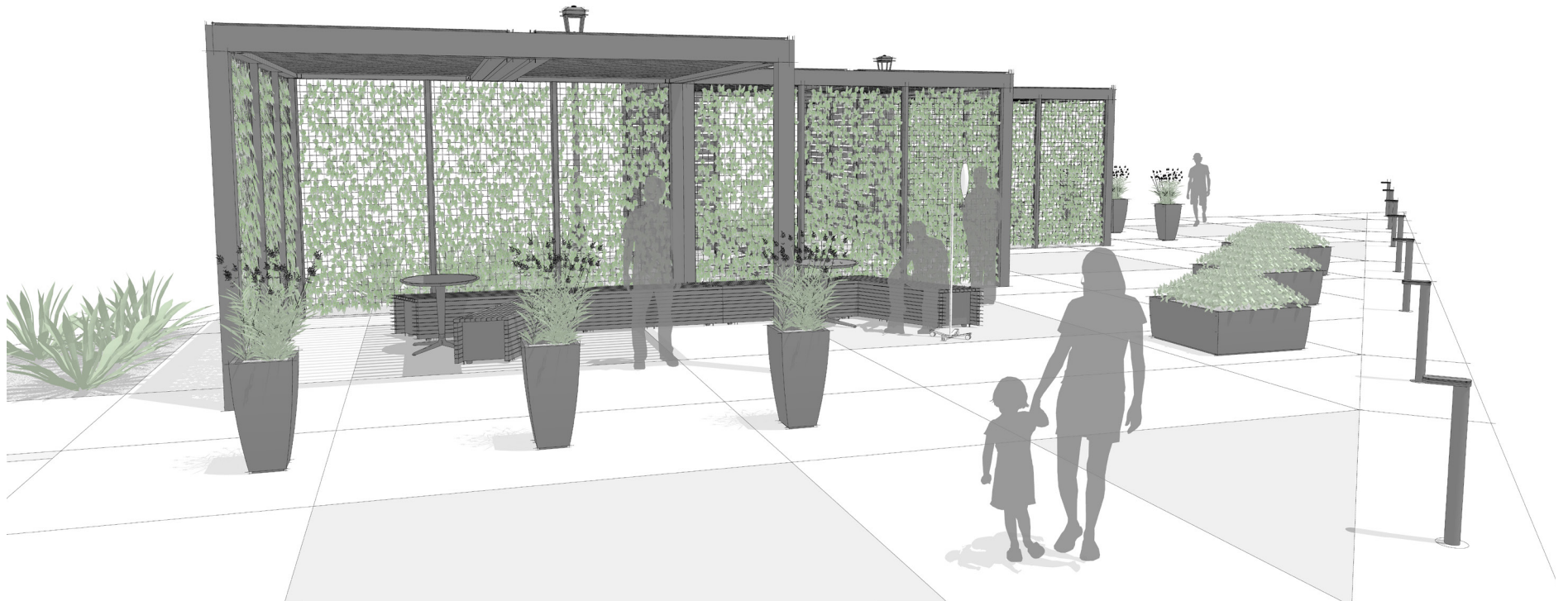
Care

R

Upfit | landscapeforms.com

landscapeforms®

CARE APPLICATION RETREAT (R)



VIEW #3

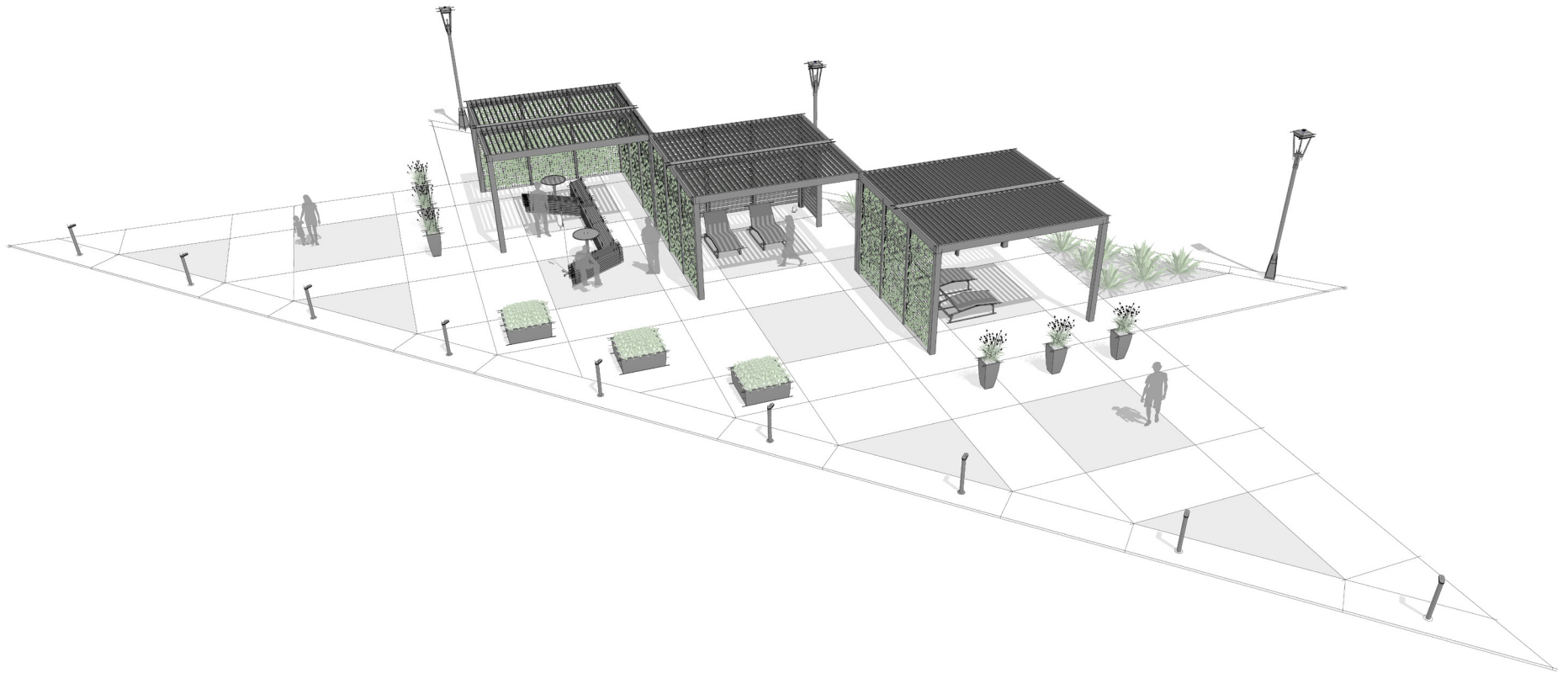
Care

R

Upfit | landscapeforms.com

landscapeforms®

CARE APPLICATION RETREAT (R)



VIEW #4

CARE APPLICATION

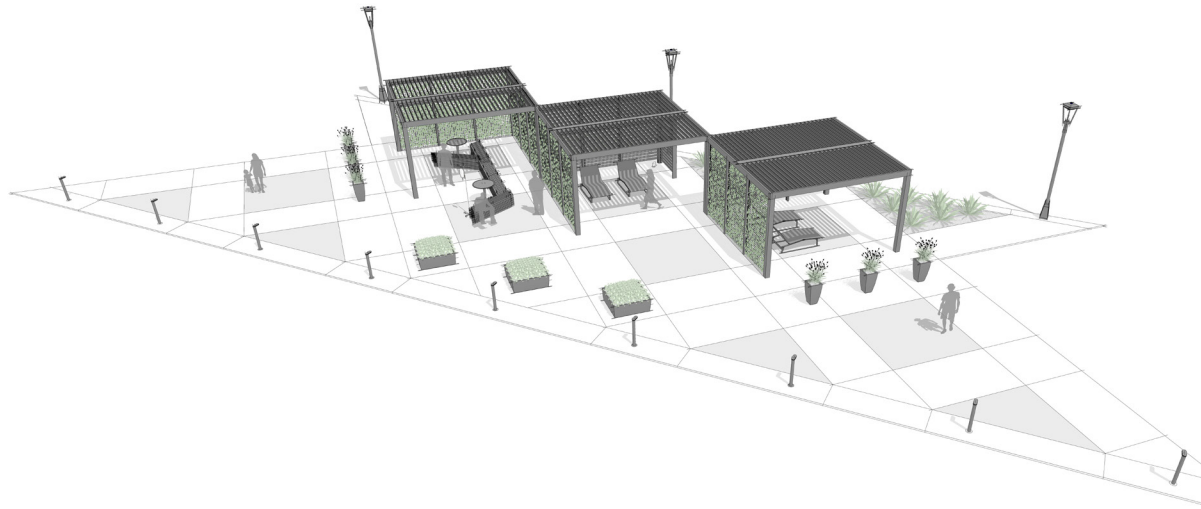
RETREAT (R)

PLACE: RETREAT

A small area of respite where people can contemplate or have a quiet, private conversation.

PRIMARY INSIGHT: NURTURE HEALING

Connect patients, staff, and visitors with natural light and fresh air to nurture healing, provide moments of respite, and establish a healthy mind-body balance.



VIEW #4

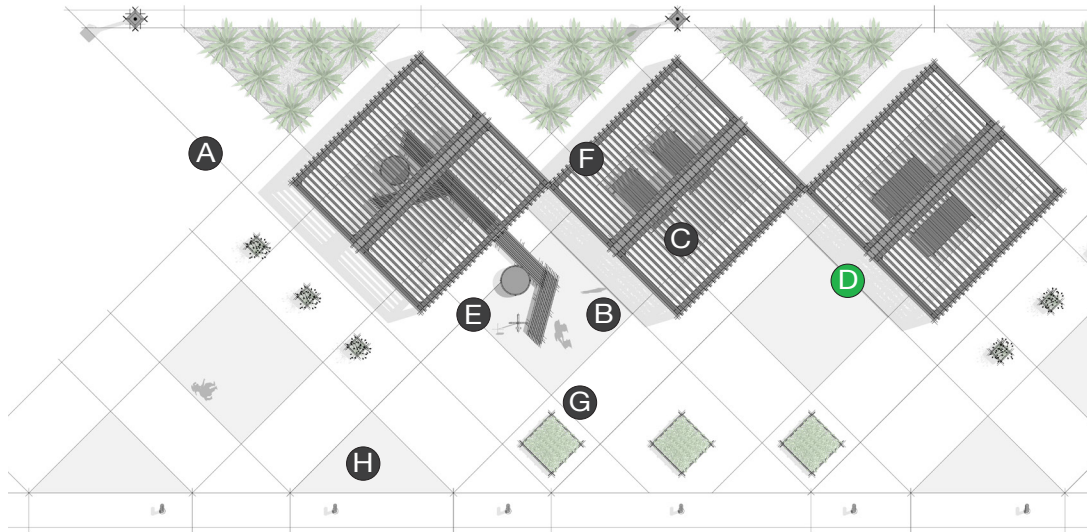
Care

R

Upfit | landscapeforms.com

landscapeforms®

CARE APPLICATION RETREAT (R)



PLAN



ELEVATION

ELEMENTS, ATTRIBUTES, AND USER EXPERIENCE

- A** Three [Upfit](#) units with Upfit louvered and green panels arranged in a diagonal configuration create multiple semi-secluded zones for rest and rejuvenation.
- B** Upfit green panels and landscaping marry built and natural elements.
- C** Upfit louvered roofs provide protection from wind and sun; weather management offers control of sun and shade levels and rain protection.
- D** Power can be delivered through Upfit's posts and beams to accommodate lighting and to provide charging access points.
- E** [Parallel 42 benches](#) with [Chipman tables](#) offers a place to rest during walks on the healthcare campus and keep visitors and people in wheelchairs seated together.
- F** [Cochran chaise lounges](#) offer a reclined posture for staff during a work break or visitors seeking quiet contemplation.
- G** [Sorella planters](#) create a soft boundary in this respite space.
- H** [Torres path lights](#) illuminate the edge of the walking path.