

# CARE APPLICATION HEALING GARDEN (HG)

---



VIEW #1

---

Care

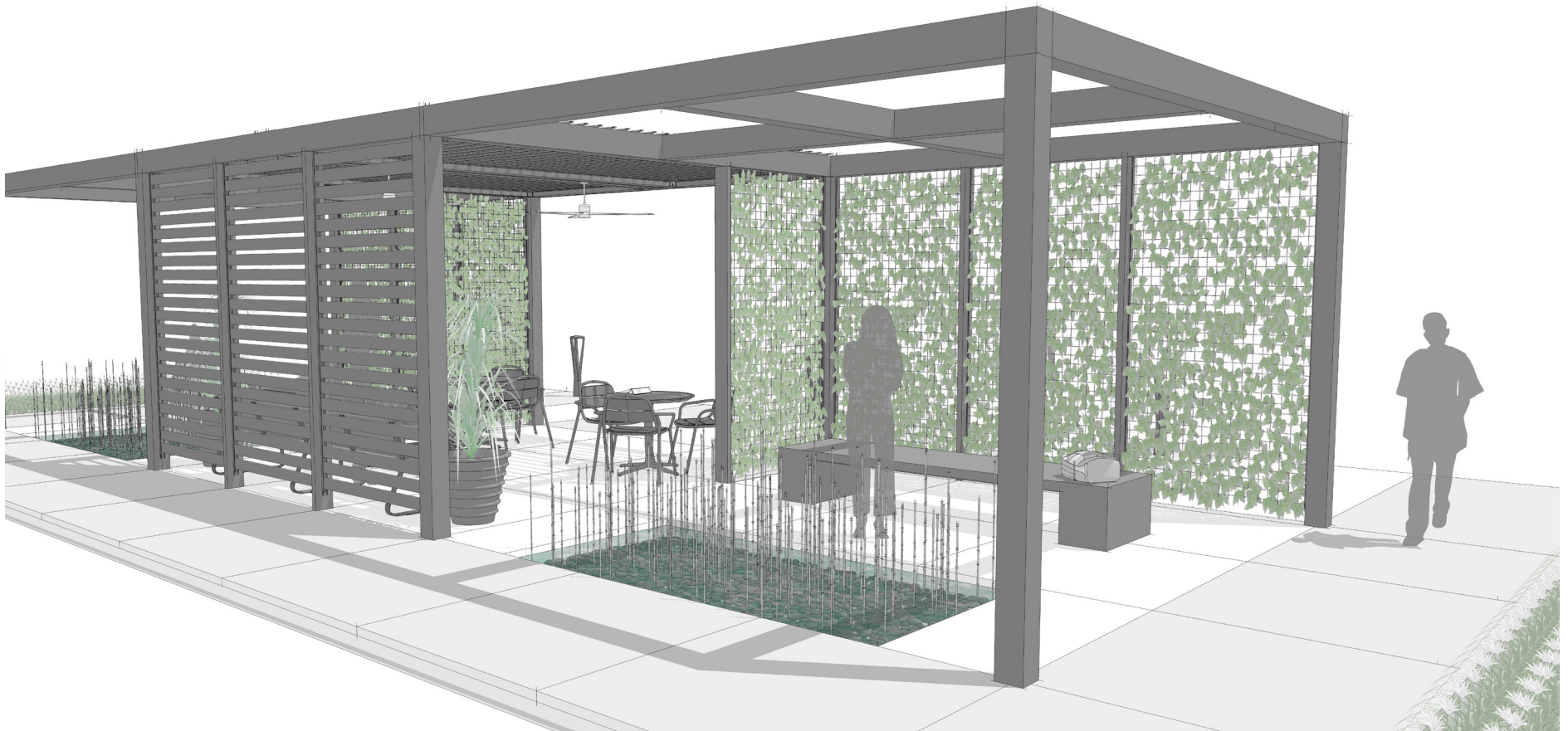
HG

Upfit | [landscapeforms.com](https://landscapeforms.com)

landscapeforms®

# CARE APPLICATION HEALING GARDEN (HG)

---



VIEW #2

---

Care

HG

Upfit | [landscapeforms.com](https://landscapeforms.com)

landscapeforms®

# CARE APPLICATION HEALING GARDEN (HG)

---



VIEW #3

---

Care

HG

Upfit | [landscapeforms.com](https://landscapeforms.com)

landscapeforms®

# CARE APPLICATION HEALING GARDEN (HG)

---



VIEW #4

---

Care

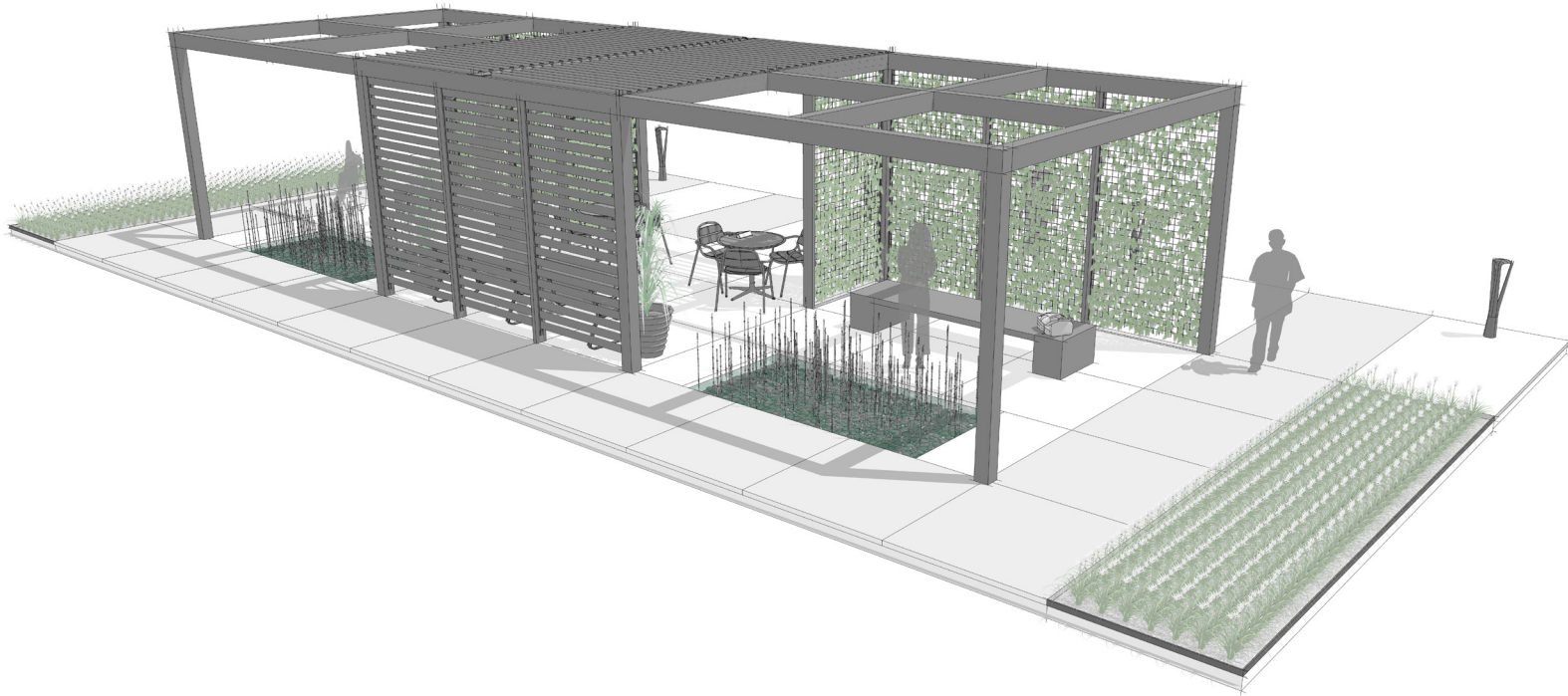
HG

Upfit | [landscapeforms.com](https://landscapeforms.com)

landscapeforms®

# CARE APPLICATION HEALING GARDEN (HG)

---



VIEW #5

---

Care

HG

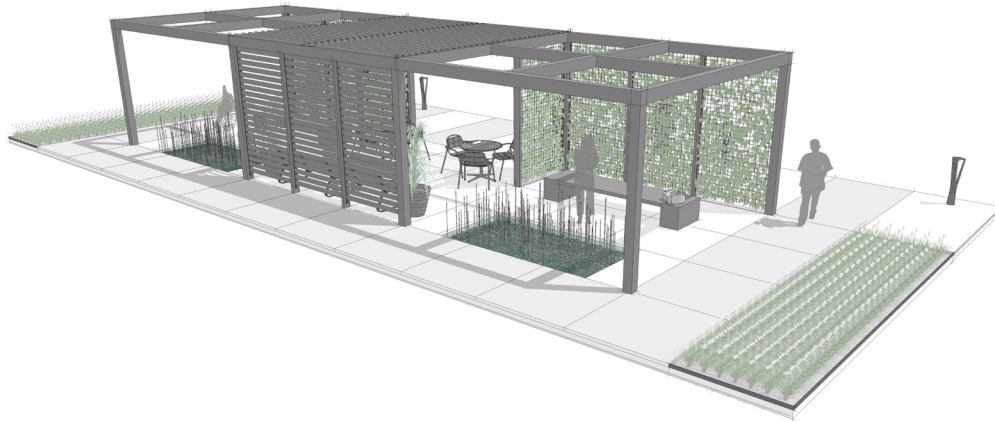
Upfit | [landscapeforms.com](https://landscapeforms.com)

landscapeforms®

# CARE APPLICATION

## HEALING GARDEN (HG)

---



### PLACE: HEALING GARDEN

A serene area in which design and natural elements engage the senses through color, touch, sight, and sound.

### PRIMARY INSIGHT: NURTURE HEALING

Connect patients, staff, and visitors with natural light and fresh air to nurture healing, provide moments of respite, and establish a healthy mind-body balance.

VIEW #5

---

Care

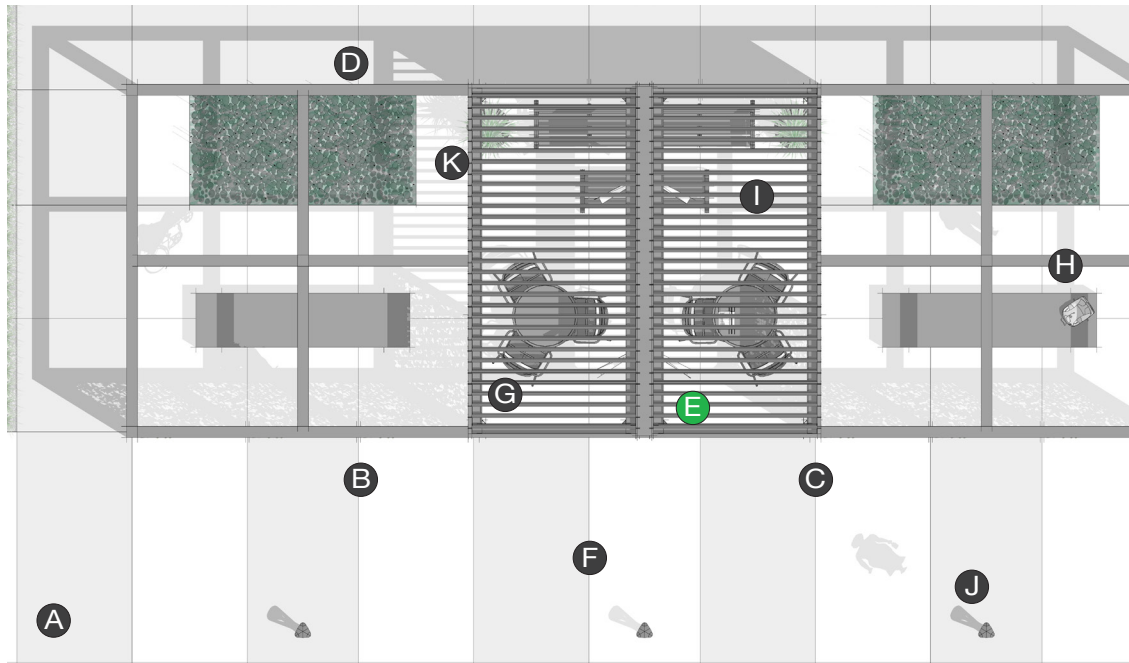
HG

Upfit | [landscapeforms.com](https://landscapeforms.com)

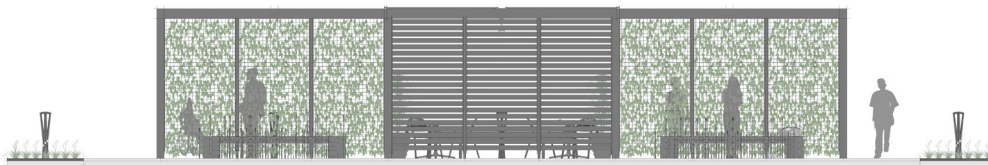
landscapeforms®

# CARE APPLICATION

## HEALING GARDEN (HG)



PLAN



ELEVATION

### ELEMENTS, ATTRIBUTES, AND USER EXPERIENCE

- A** Perimeter gardens offer an outward-facing view to people desiring a peaceful, secluded experience.
- B** An abundance of [Upfit](#) green panels bring tranquility and soft surfaces to this Upfit structure.
- C** Upfit open and louvered roofs give people options for shade or unobstructed views to the sky. Louvered roofs provide protection from wind and sun; weather management offers control of sun and shade levels and rain protection.
- D** Water features introduce a calming focal point.
- E** Power for the overhead fans is delivered through Upfit's posts and beams. Powered Upfit spaces can also accommodate overhead and embedded lighting and access points to charge devices.
- F** Generous circulation aids people using wheelchairs or walkers.
- G** An open, centrally located seating area for visiting and sharing a meal features [Chipman tables](#) and [21 chairs](#).
- H** [Abril benches](#) ground the meditation spaces and invite people to enjoy the sounds of the water features.
- I** [FGP benches](#) with arms provides an alternative to sitting at tables.
- J** [FGP path lights](#) provide wayfinding and illuminate the walking path.
- K** [Kornegay Ribbed planters](#) bring plants and flowers into the central seating area.