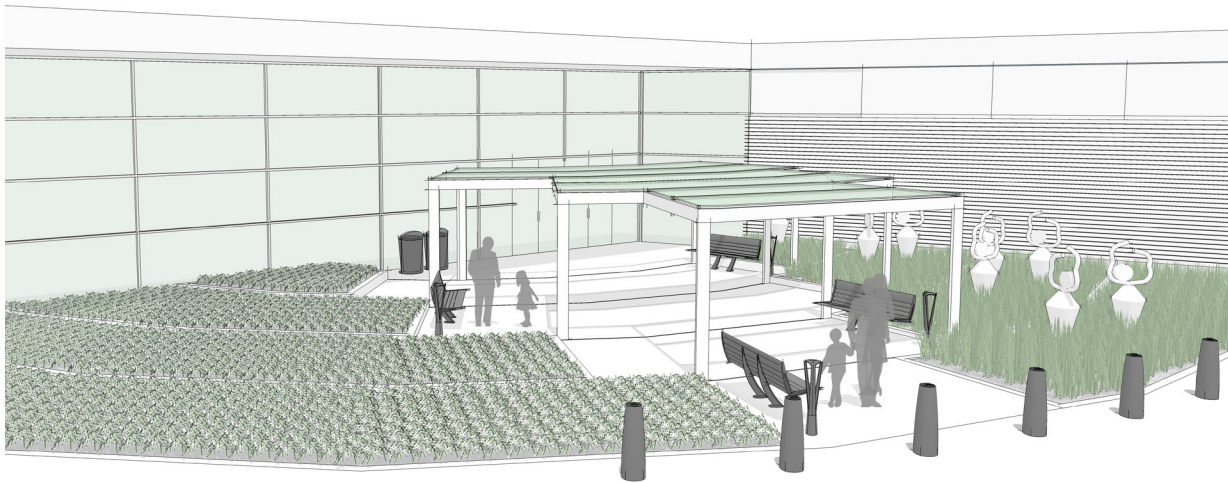


# HEALTHCARE APPLICATION

## PEDIATRIC HEALTHCARE – ENTRY GARDEN (P-EG)



VIEW #1



**LOCATION:**  
PEDIATRIC HEALTHCARE CAMPUS

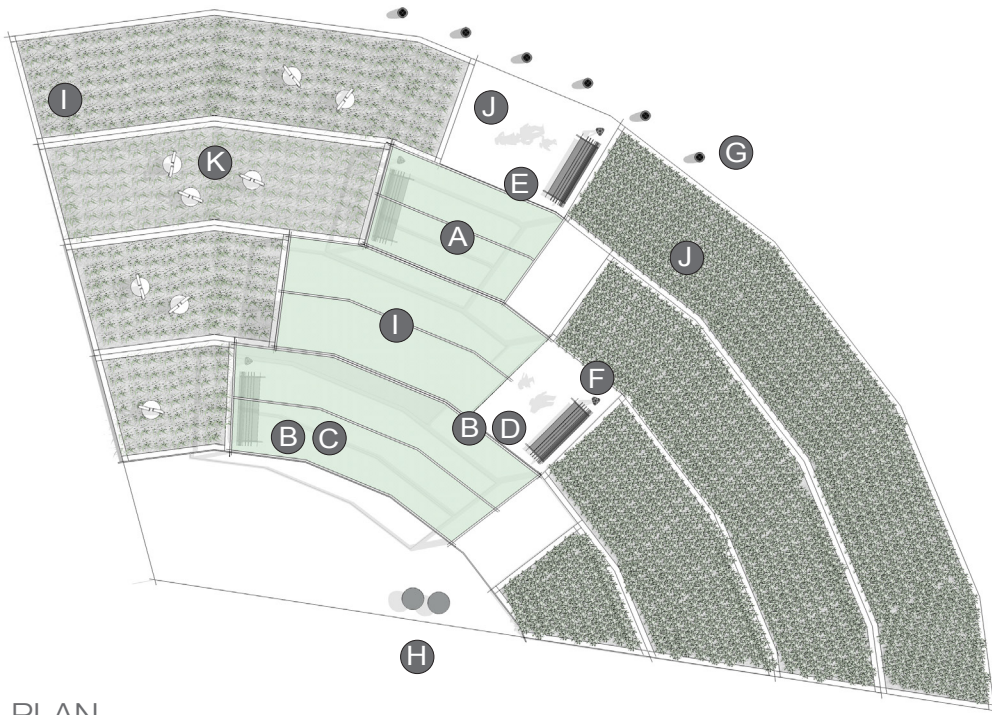
**PLACE:**  
ENTRY GARDEN

Entry Garden is a visually pleasant botanical area near the entrance of a healthcare facility where vehicles can pick up or drop off passengers.

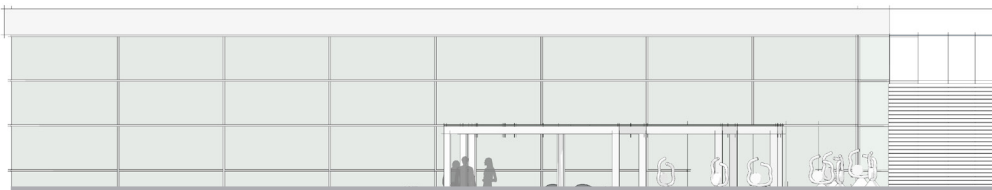
**PRIMARY INSIGHT:**  
ENHANCE BELONGING

Settings that reinforce a sense of belonging and orientation within a space reduce stress and assist in navigating unfamiliar surroundings.

VIEW #2



PLAN

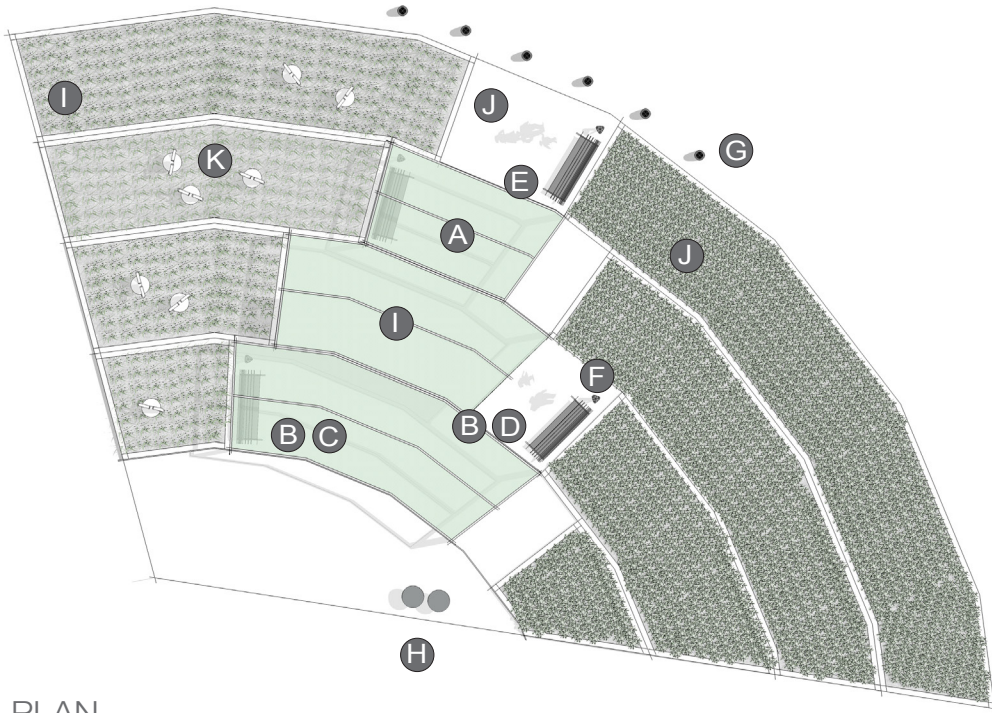


ELEVATION

## ELEMENTS, ATTRIBUTES, AND USER EXPERIENCE

- A** Overhead canopies (custom elements) protect users from the elements while arriving or waiting and create a welcoming, comforting, and humane sense of scale while moving towards the facility.
- B** Placement of benches offer options to sit under canopies or in open sunlit areas.
- C** Seating is dispersed to allow families and groups a range of privacy while waiting and visiting.
- D** Seating areas are sized to easily accommodate wheelchairs.
- E** Cantilevered **Austin benches** are surface mounted to minimize tripping hazards and aid in maintenance of paving surfaces.
- F** **FGP path lights** are strategically placed to create a gentle, friendly glow at each seating area.
- G** **Sentinel bollards** define the boundary of the space with a soft glow.
- H** **Austin litter** provides attractive options to conceal and recycle waste.

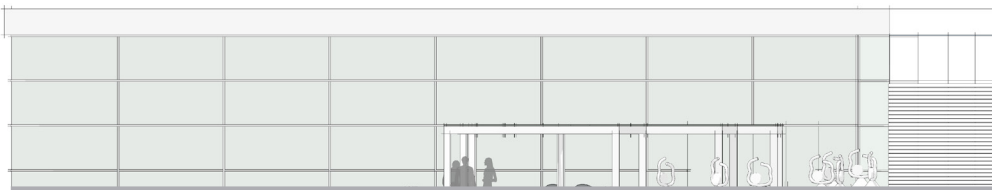
**I J K** next page



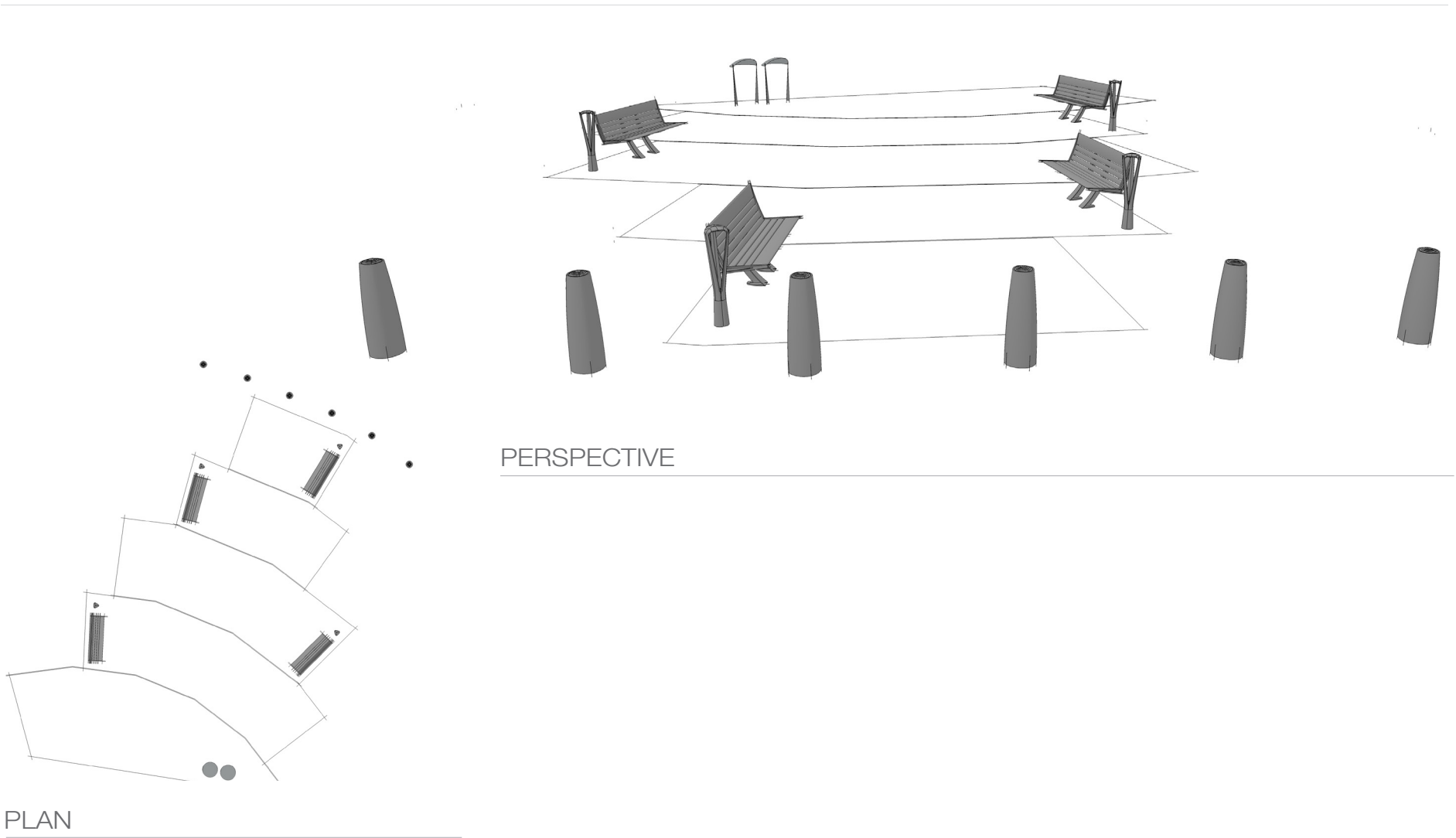
PLAN

### ELEMENTS, ATTRIBUTES, AND USER EXPERIENCE (CONTINUED)

- I** Horizontal wood fascia (custom element) creates a natural, approachable, and inviting feel.
- J** Radial hardscaping and plantscaping softens the setting to create a welcoming atmosphere.
- K** Abstract sculptures of children invite discussion and add a touch of whimsy.



ELEVATION



PLAN

PERSPECTIVE