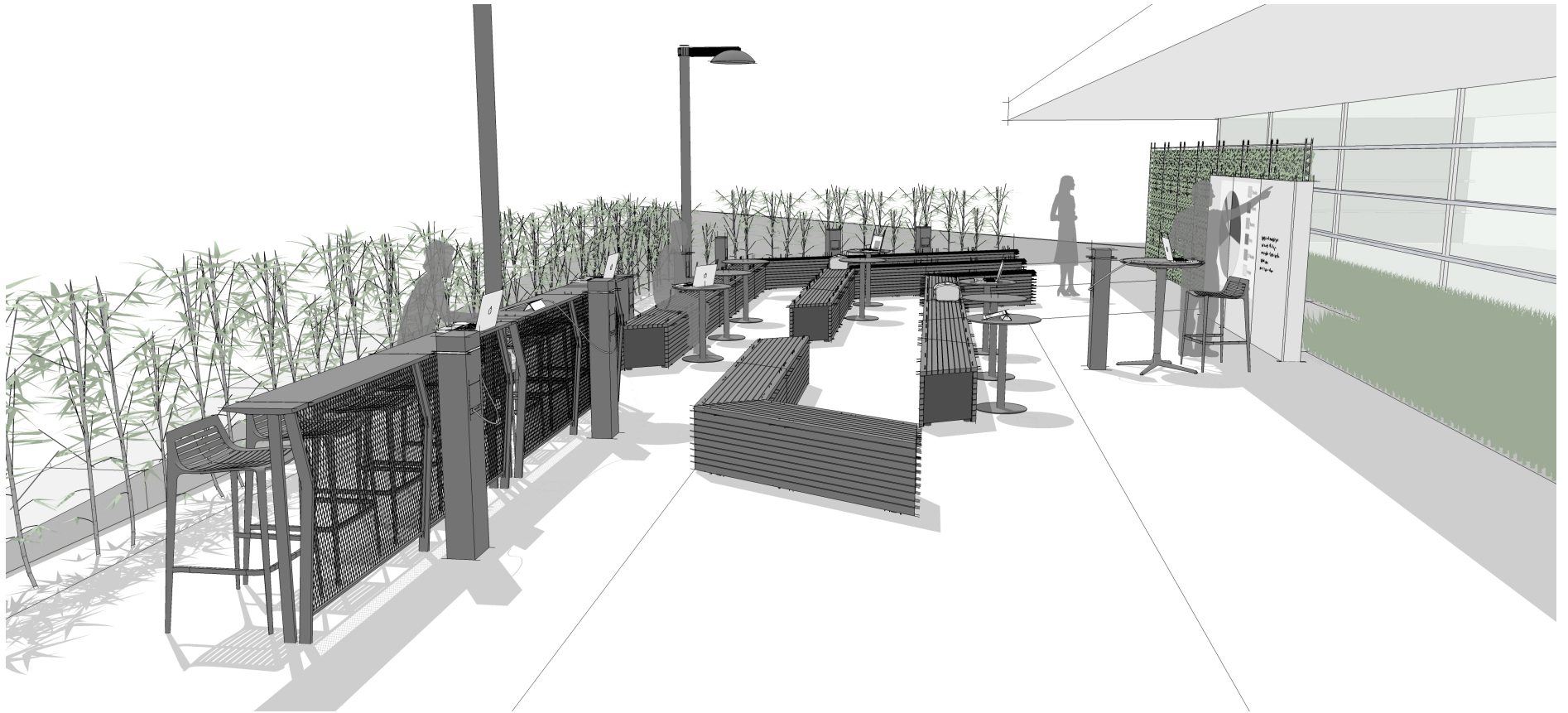


EDUCATION APPLICATION

FORUM 1 (F1)



VIEW #1



VIEW #2

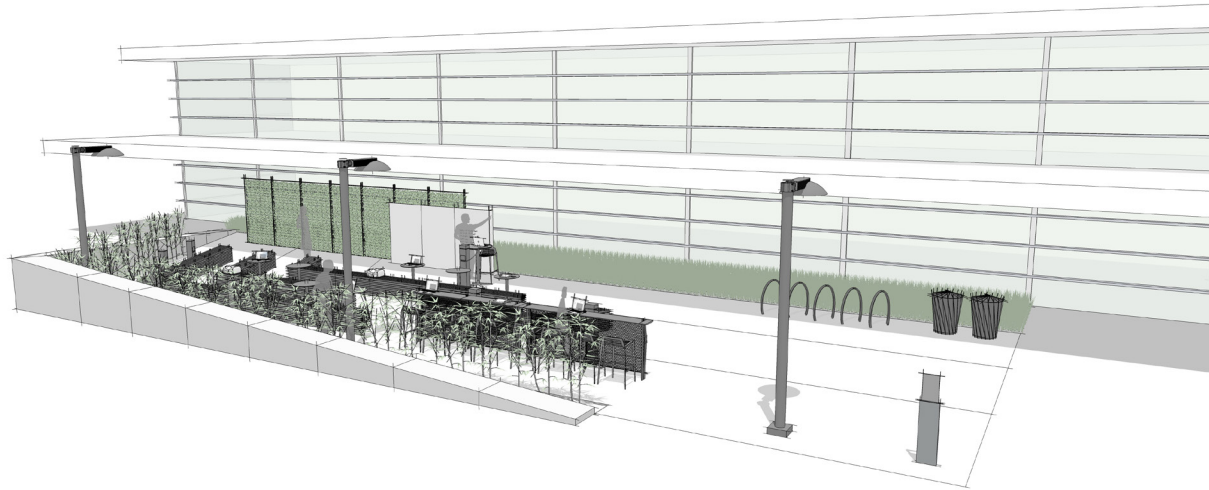


PLACE: FORUM

Forum is an area designed for presentations and performances.

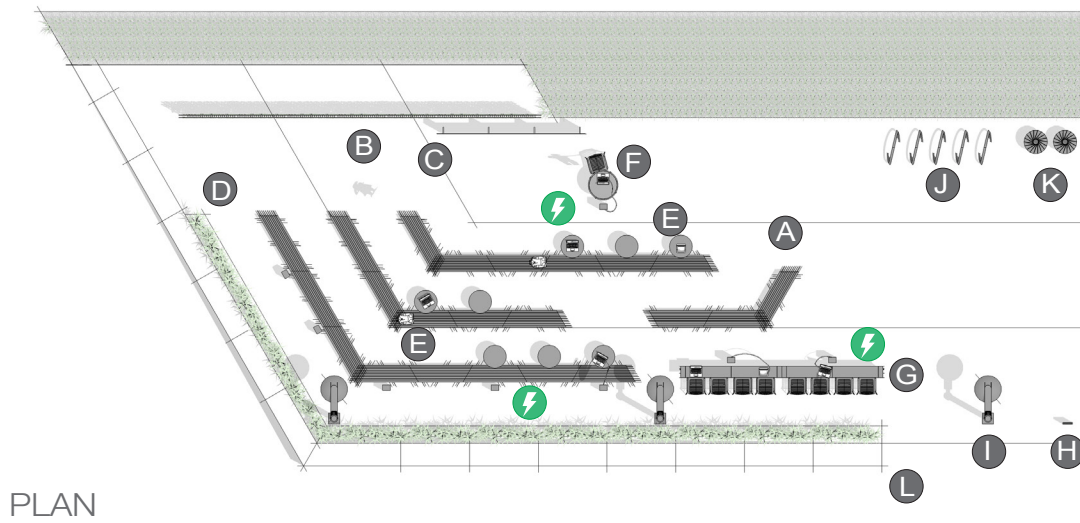
PRIMARY INSIGHT: ENCOURAGE ACTIVE LEARNING

Well-designed environments can encourage today's active approach of constructing knowledge together by supporting effective presentation and collaboration methods.

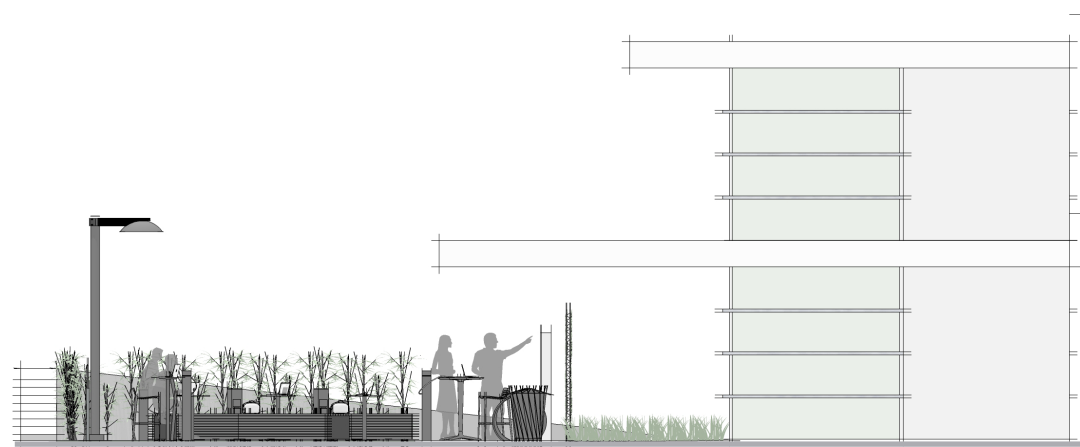


VIEW #3

ELEMENTS, ATTRIBUTES, AND USER EXPERIENCE



PLAN



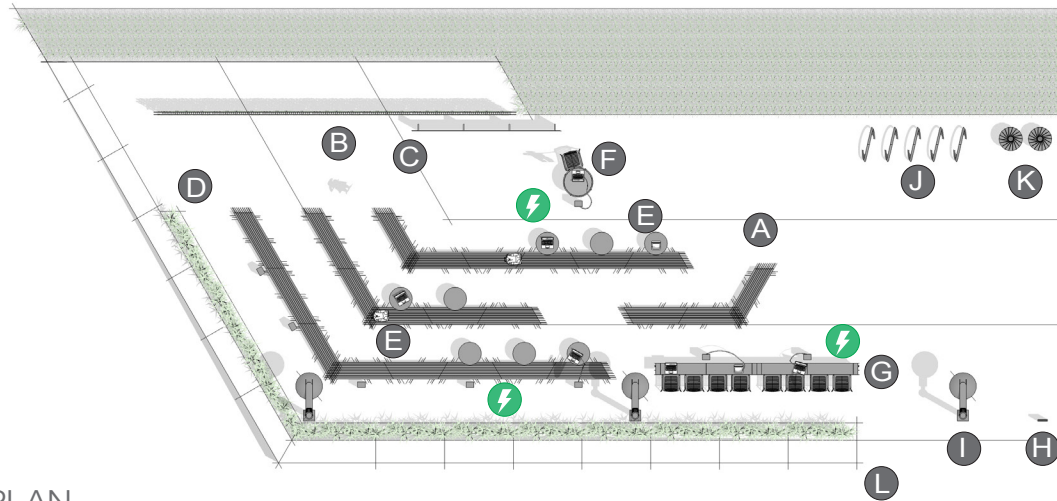
ELEVATION

- A** Forum seating is typically configured to optimize viewing of presentations, films or performances.
- B** The presentation area flanks a building to provide shade and utilities for presenters or performers.
- C** Vertical glass surfaces (custom element) become surfaces for annotation or, when partnered with a short throw projector, can allow for teaching or recreational film viewing.
- D** **Parallel 42 benches** are configured to face the primary presentation area. They support active learning by providing ample, flexible seating surfaces and a convenient place for personal items such as backpacks. This bench configuration supports a range of activities from presentations to a variety of postures for large group breakouts.
- E** **Parc Centre tables** support interactivity by providing functional space for writing, storage of personal items, and use of digital devices.
- F** A **Chipman standing-height table** and **Chipman stool** provide the presenter with a refined working and seating surface that can be moved to adapt to the presentation.

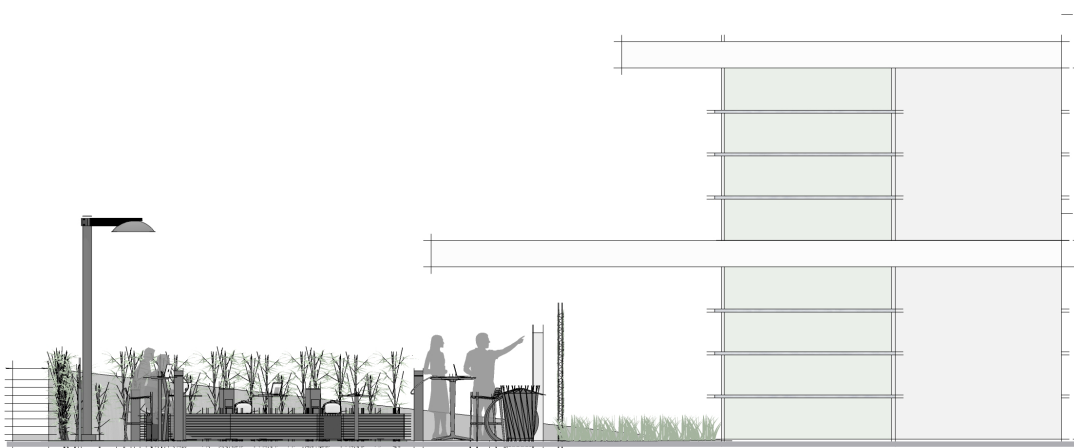
G H I J K L ⚡ next page

ELEMENTS, ATTRIBUTES, AND USER EXPERIENCE (CONTINUED)

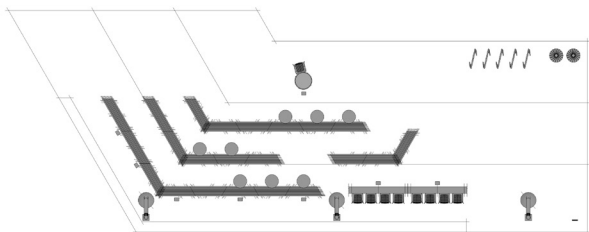
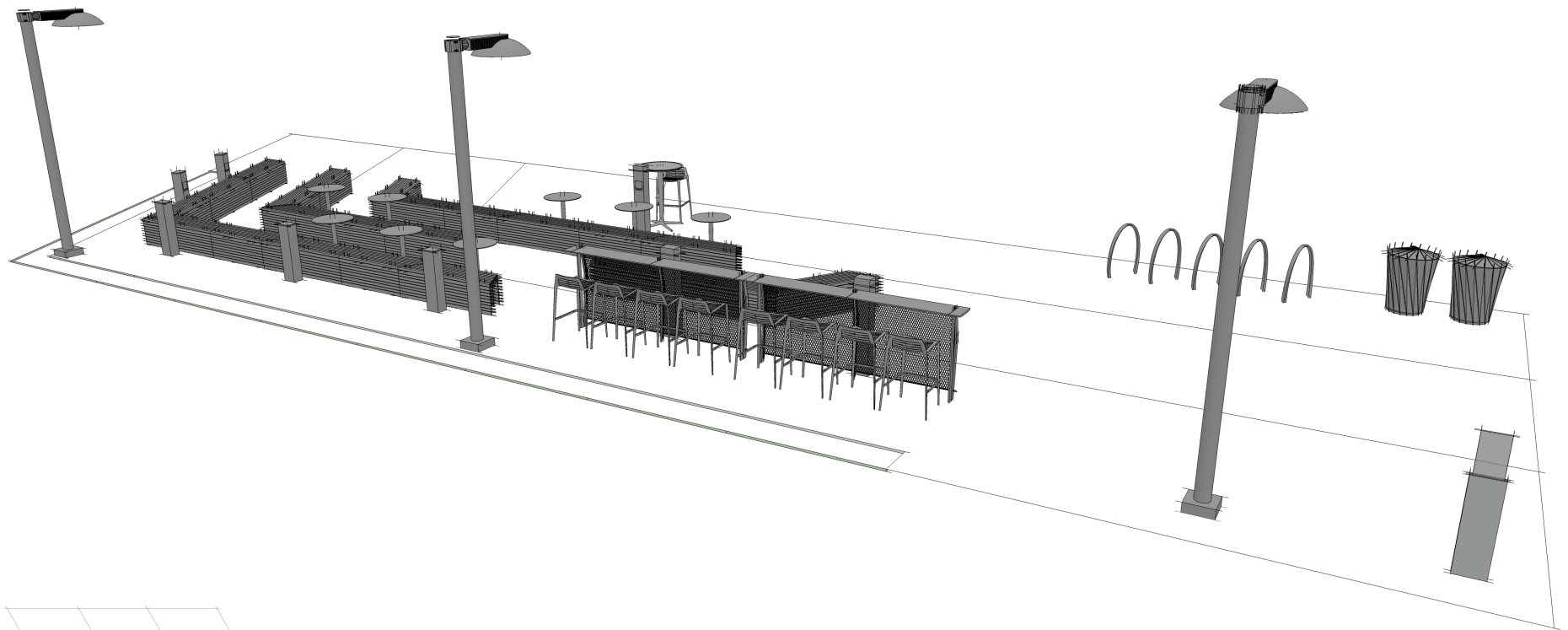
- G** A combination of **Chipman stools** and the **Jessie rails** support more active standing and perching postures for un-obstructed views from the back.
- H** **Reeder illuminated sign** provides campus wide wayfinding and identification of available settings which eases navigation.
- I** **LEO lighting** provides the opportunity for customized lighting scenes to heighten engagement for a variety of presentations and types of collaboration.
- J** **Loop bike racks** support campus transit by providing secure bike storage.
- K** **CPC Litters** provide attractive options to conceal and recycle waste.
- L** Plantscaping and hardscaping define the Forum and provide a degree of boundary.
- ⚡** **Outdoor charging stations** adjacent to rails, benches, table and stools provide convenient access to power and USB charging.



PLAN



ELEVATION



PERSPECTIVE

PLAN