



Place: Huddle

A Huddle is a space adjacent to hubs optimized for small group gathering and social engagement.

Primary Insight: Stimulate Social Interaction and Continuous Learning

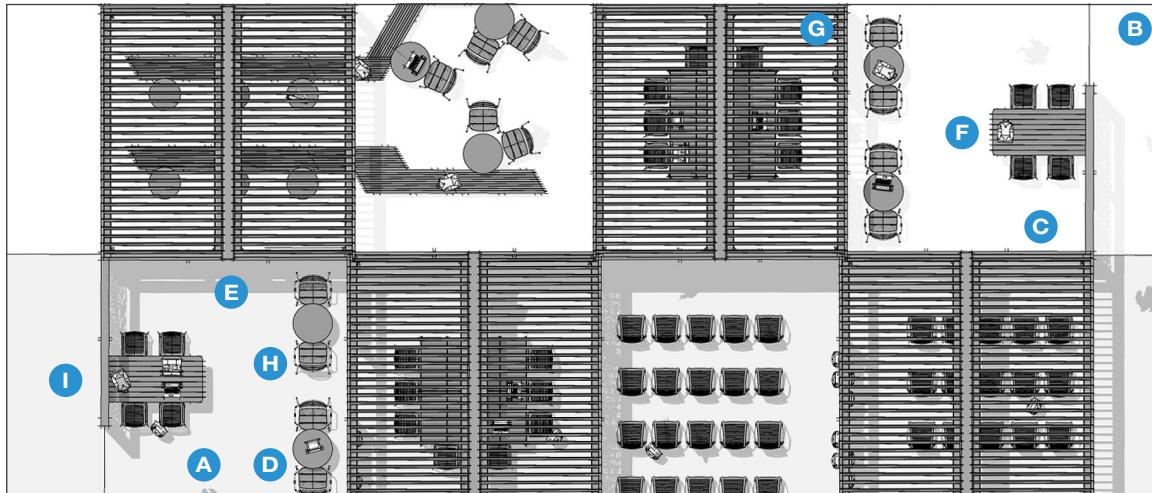
Natural postures and comfortable settings encourage face-to-face connections, stimulate social interaction, and facilitate continuous learning.



View 1



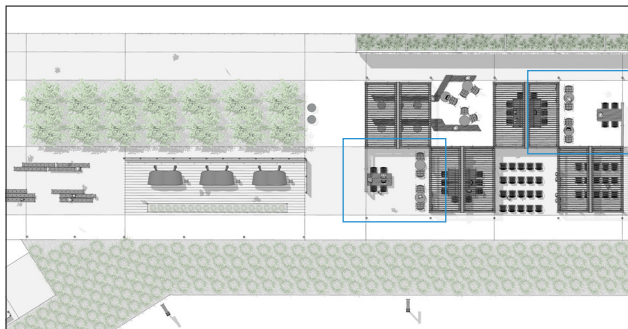
View 2



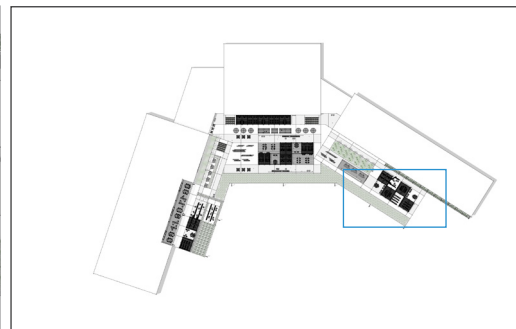
Elements, Attributes, and User Experience

- A** A Huddle is typically situated near a Plaza or larger assembly point to facilitate small breakouts from large group gatherings.
- B** The furniture configurations encourage collaboration among multiple groups through face-to-face social interactions.
- C** *Upfit adaptive structures* create Huddle zones near classroom spaces.
- D** Upfit slatted infill panels create a sense of enclosure balanced with an open feel and fresh air circulation.
- E** Upfit louvered panels angle to shade interiors and maximize privacy to aid in student focus.
- F** Upfit peninsula tables and *Chipman stools* create a work area to support individual or group learning.
- G** Upfit posts and beams route electricity to power lights, display monitors, and charging ports.
- H** *Parc Centre tables* and *21 chairs* support individual short-term study and socialization.
- I** Upfit green panels with wire screens create a lush planted wall on the Upfit structure to soften the space and provide privacy.

Plan



Key Plan



Site Map