

LIVE APPLICATION

PUBLIC SPACE – POCKET PARK (PP)



VIEW #1



VIEW #2



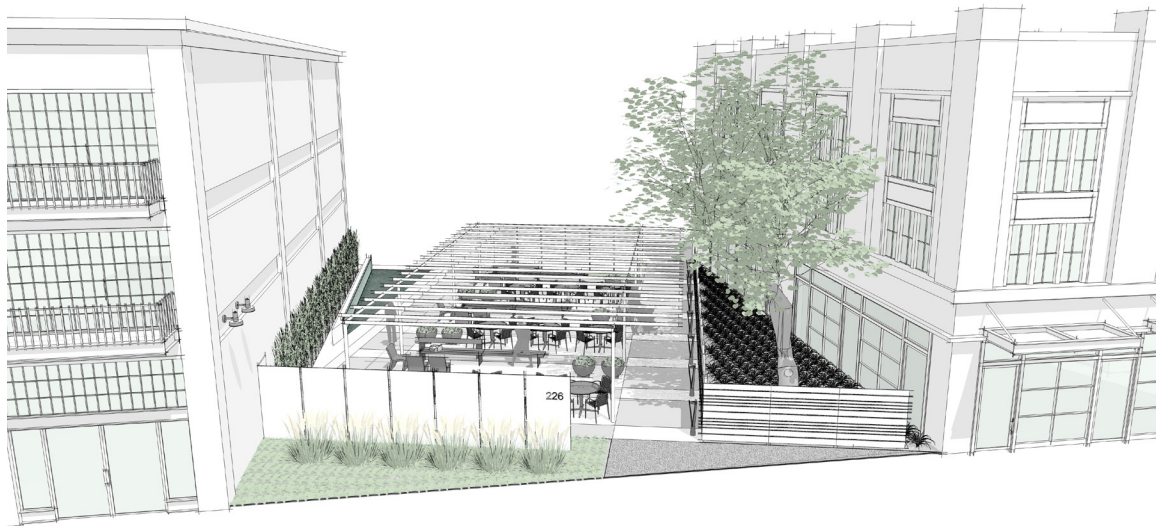
LOCATION:
PUBLIC

PLACE:
POCKET PARK

A pocket park is a small, urban neighborhood park bounded by buildings.

PRIMARY INSIGHT:
OFFER AN OASIS

Transitional spaces that integrate nature offer vital opportunities for pause, which stimulates physical, cognitive, and emotional revitalization.



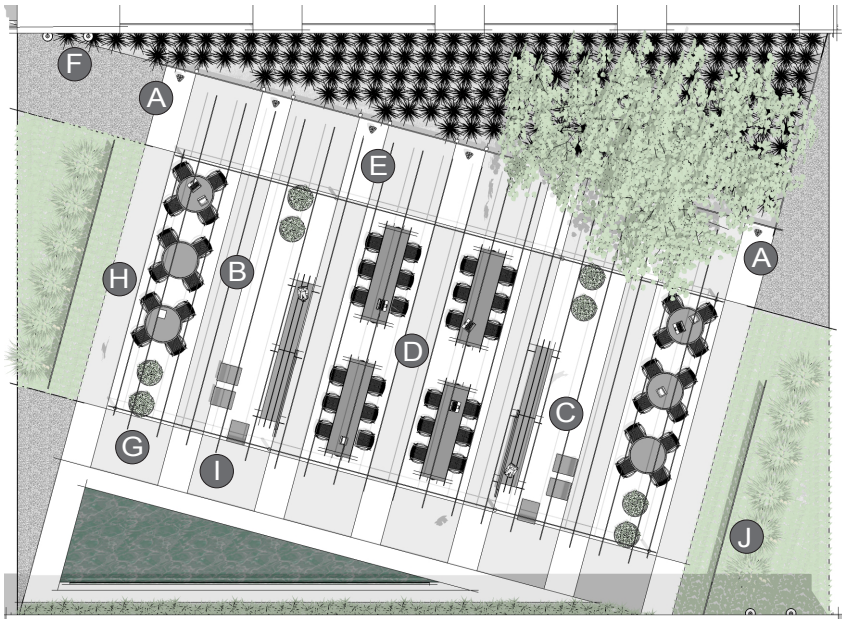
VIEW #3

LIVE

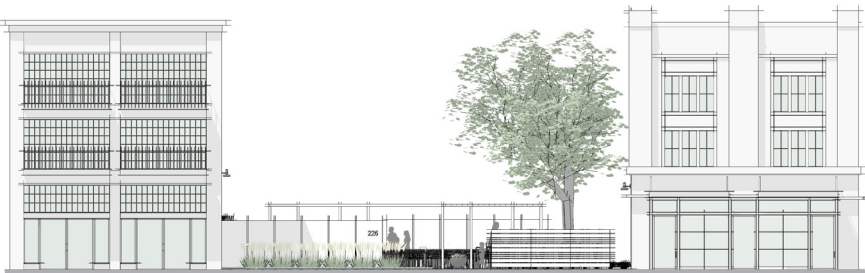
PP

landscapeforms.com

landscapeforms®



PLAN

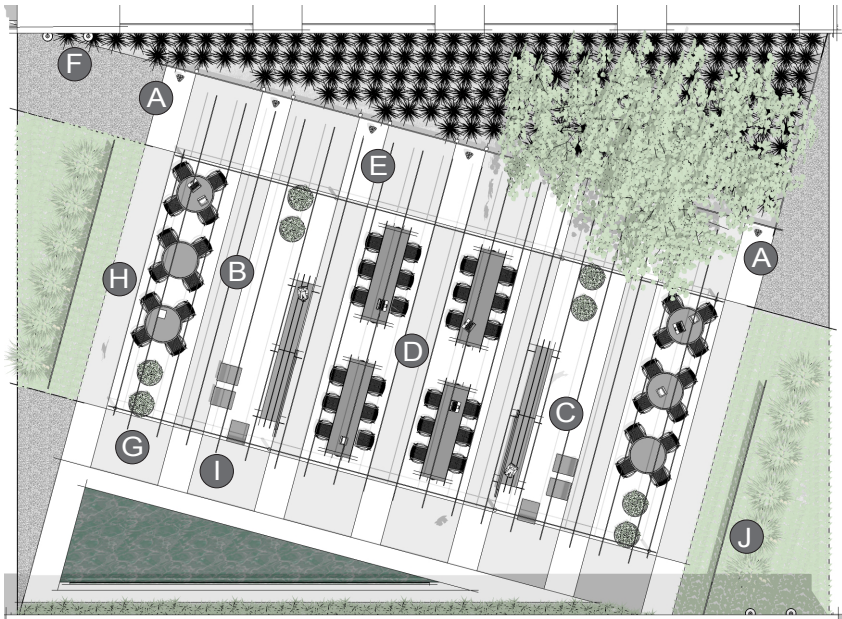


ELEVATION

ELEMENTS, ATTRIBUTES, AND USER EXPERIENCE

- A** Paving materials, vertical panels, fence, and overhead canopy (custom elements) all work together to co-create a unique entryway to this peaceful park.
- B** Multiple seating options allow users to gather alone or with others and provide options for retreat and physical, mental, and emotional pause from daily life. All gathering areas have generous space for strollers or wheelchairs to include people of all ages and abilities.
- C** Bancal benches and Sillarga chairs provide a peaceful, casual setting for small social groups.
- D** GO OutdoorTables and Chipman chairs offer opportunities for relaxed intimate visits or group gatherings.
- E** FGP path lighting highlights a circulation path and creates a warm, ambient glow along the perimeter of the park.
- F** Arne wall-mounted luminaires highlight the exterior building walls of the park and illuminate the space to create a cozy, comfortable atmosphere.

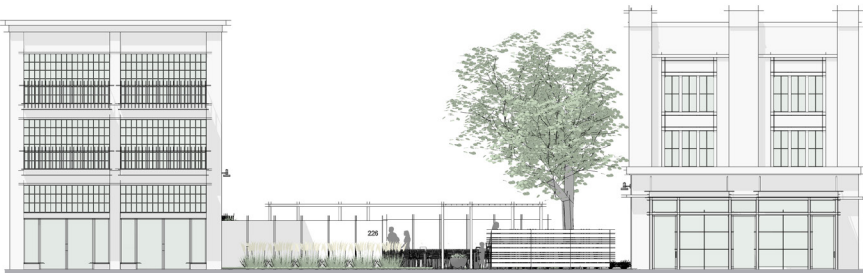
G H I J next page



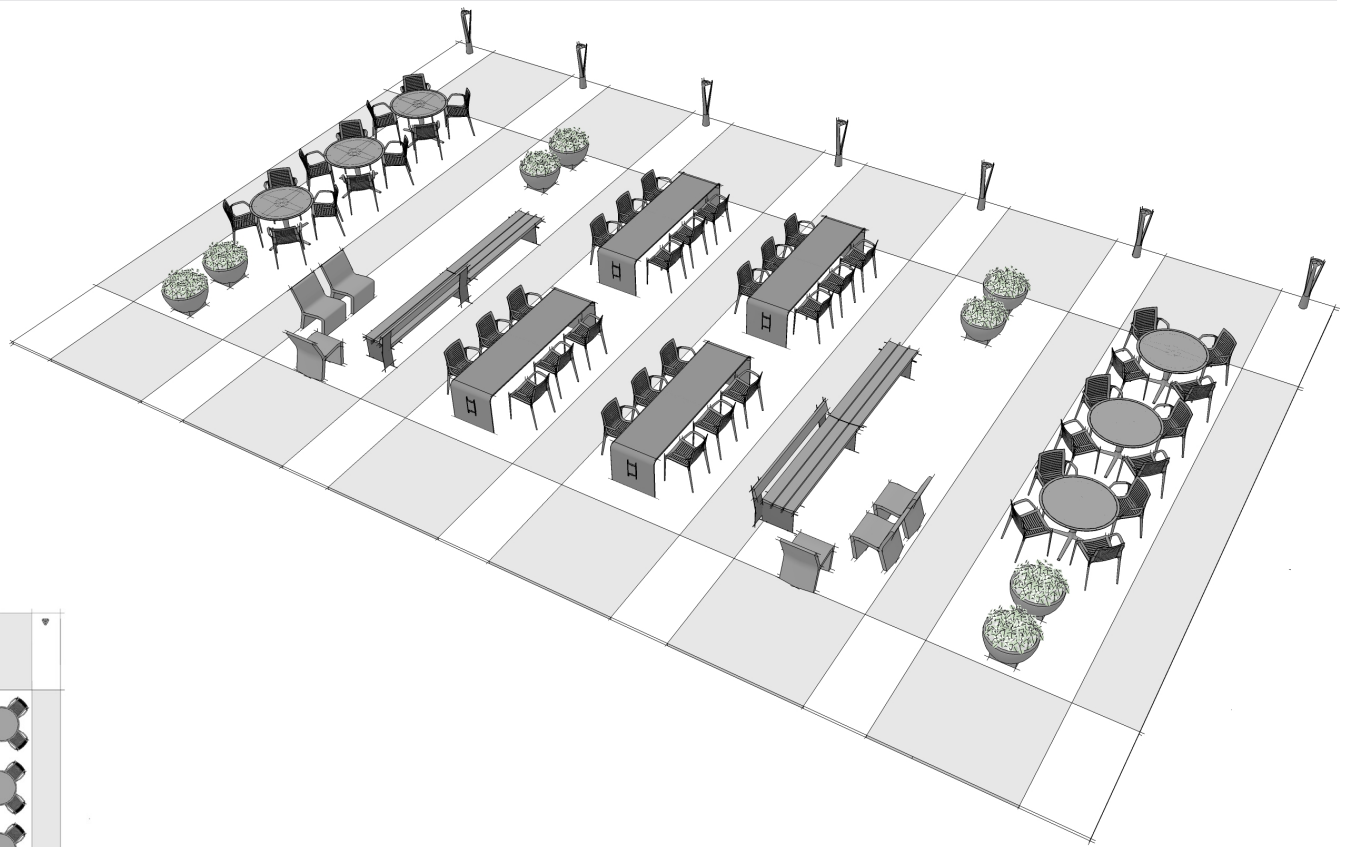
PLAN

ELEMENTS, ATTRIBUTES, AND USER EXPERIENCE (CONTINUED)

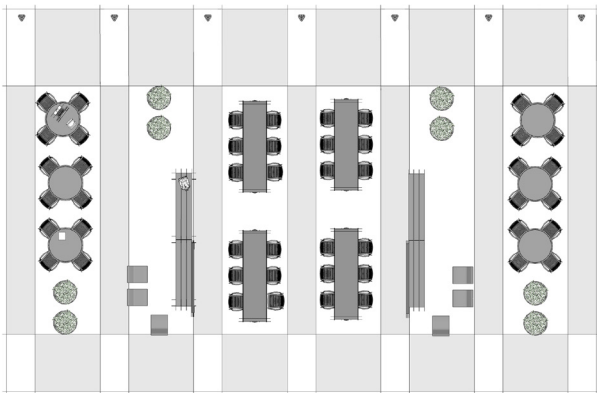
- G** *Rosa planters* with flowers create visual and olfactory stimulation and add to the immersive experience of the space.
- H** *Chipman tables* and *Chipman chairs* support working, dining, and gaming activities.
- I** A small water feature adds both a visual and auditory experience to the setting to further stimulate physical, cognitive, and emotional revitalization.
- J** The angular layout of the park softens the box-like effect of adjacent tall buildings.



ELEVATION



PERSPECTIVE



PLAN